

Vernalift Top in/Top Out

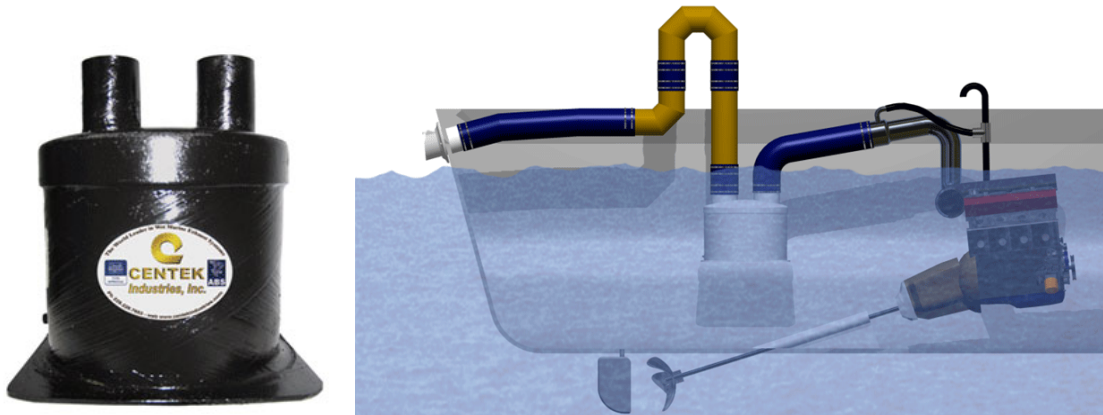
The Vernalift was designed originally for small auxillary engines installed near or below the water line. Now the Vernalift family has expanded to include new and larger engines. If you have any questions or need help, [contact us](#). Not sure what finish you need? [Click here](#).

Application: Inboards, Sailboats & Generators

Fuel type: Gas/Diesel

Waterline: Above or Below

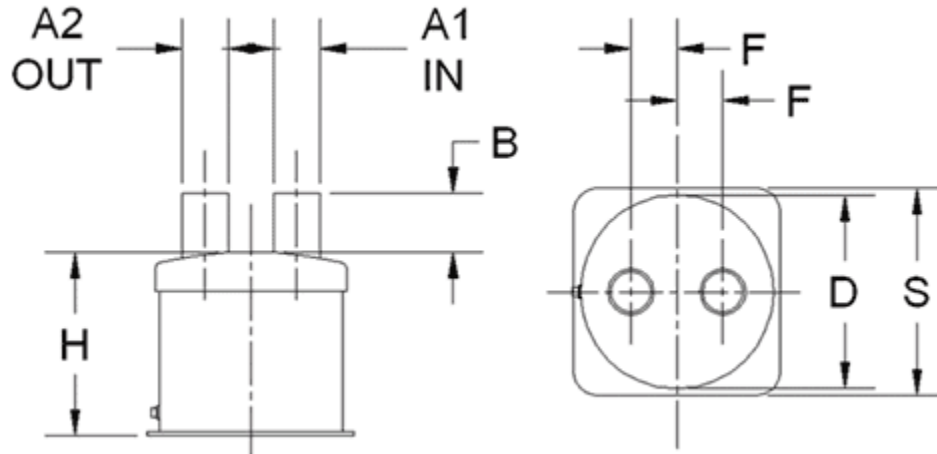
Sound rating: Better



VERNALIFT™ TOP IN - TOP OUT

Part #	A1		A2		B		D		F		H		S	
	INLET	MM	OUTLET	MM	I/O LENGTH	MM	DIAMETER	INCHES	I/O OFFSET	MM	HEIGHT	INCHES	SQ. BASE	MM
1500060	1.50	38	1.50	38	2.50	64	8.36	212	2.00	51	8.00	203	9.00	229
1500219	1.50	38	2.00	51	2.50	64	8.36	212	2.00	51	8.00	203	9.00	229
1500220	1.63	41	1.50	38	2.50	64	8.36	212	2.00	51	8.00	203	9.00	229
1500270	1.63	41	1.63	41	2.00	51	6.38	162	1.50	38	9.00	229	7.00	178
1500003	1.63	41	1.63	41	2.50	64	8.36	212	2.00	51	8.00	203	9.00	229
1500143	1.63	41	1.88	48	2.50	64	8.36	212	2.00	51	8.00	203	9.00	229
1500005	1.75	44	1.75	44	2.50	64	8.36	212	2.00	51	8.00	203	9.00	229
1500007	1.88	48	1.88	48	2.50	64	8.36	212	2.00	51	8.00	203	9.00	229
1500276	2.00	51	2.00	51	2.00	51	6.36	162	1.50	38	9.00	229	7.00	178
1500221	2.00	51	1.50	38	2.50	64	8.36	212	2.00	51	8.00	203	9.00	229
1500009	2.00	51	2.00	51	2.50	64	8.36	212	2.00	51	8.00	203	9.00	229
1500010	2.00	51	2.00	51	2.50	64	10.04	255	2.50	64	10.16	258	10.50	267
1500126	2.00	51	2.38	60	2.50	64	8.36	212	2.00	51	8.00	203	9.00	229
1500011	2.25	57	2.25	57	2.50	64	8.36	212	2.00	51	8.00	203	9.00	229
1500012	2.25	57	2.25	57	2.50	64	10.04	255	2.50	64	10.16	258	10.50	267
1500013	2.38	60	2.38	60	2.50	64	8.36	212	2.00	51	8.00	203	9.00	229
1500015	2.50	64	2.50	64	2.50	64	10.04	255	2.50	64	10.16	258	10.50	267
1500141	2.50	64	2.50	64	3.00	76	12.34	313	2.75	70	12.00	305	12.00	305
1500138	2.50	64	3.00	76	3.00	76	10.04	255	2.50	64	10.16	258	10.50	267
1500016	2.88	73	2.88	73	3.00	76	10.04	255	2.50	64	10.16	258	10.50	267
1500017	3.00	76	3.00	76	3.00	76	10.04	255	2.50	64	10.16	258	10.50	267
1500063	3.00	76	3.00	76	4.00	102	12.34	313	2.75	70	12.00	305	12.00	305

1500150	3.00	76	3.50	89	4.00	102	12.34	313	2.75	70	12.00	305	12.00	305
1500064	3.50	89	3.50	89	4.00	102	12.34	313	2.75	70	12.00	305	12.00	305
1500065	4.00	102	4.00	102	4.00	102	12.34	313	2.75	70	12.00	305	12.00	305
1500066	4.50	114	4.50	114	4.00	102	12.34	313	3.00	76	12.00	305	12.00	305
1500067	4.50	114	4.50	114	4.00	102	16.17	411	4.00	102	16.00	406	17.00	432
1500271	5.00	127	5.00	127	5.00	127	12.34	313	3.31	84	17.00	432	12.00	305
1500068	5.00	127	5.00	127	5.00	127	16.17	411	4.00	102	16.00	406	17.00	432
1500069	6.00	152	6.00	152	5.00	127	16.17	411	4.00	102	16.00	406	17.00	432
1500131	8.00	203	8.00	203	8.00	203	22.00	559	5.00	127	22.00	559	23.00	584
1500154	10.00	254	10.00	254	8.00	203	28.50	724	7.00	178	28.00	711	30.00	762



The following table is for general recommendations only:

IN & OUT SIZE / MAXIMUM H.P.		
Dia. A	Gasoline	Diesel
1.50" or 1.63"	30	10
2.00"	60	25
2.50"	110	40
3.00"	160	60
3.50"	220	85
4.00"	280	125
4.50"	320	170
5.00"	370	210
6.00"	440	280
8.00"	--	420
10.00"	--	680
12.00"	--	900
14.00"	--	1150

NOTE: For V-Block engines where twin exhaust lines are desired, divide the H.P. by two and then match to the appropriate size