

## PLUG IN MAINS



Quick and easy mounting



User manual supplied with the charger



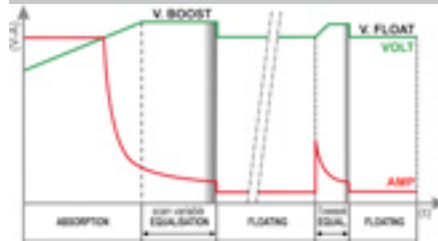
AC input Wago plug

DC connector plug  
4-way  
2 locking screws

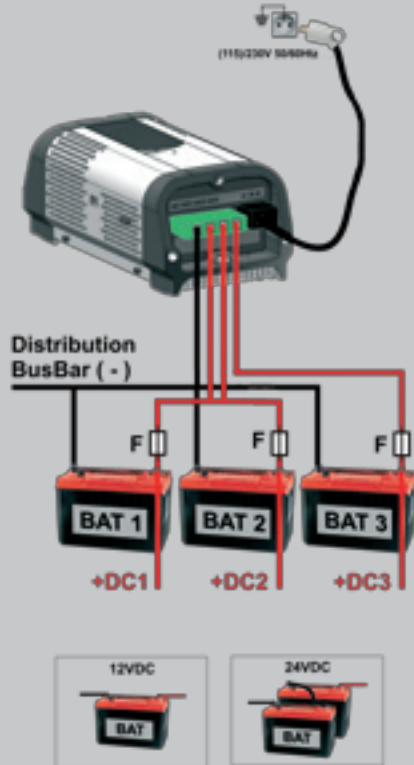


Wago plug  
+3,5 cm  
[+1.38inch]

## LOADING PROFILES

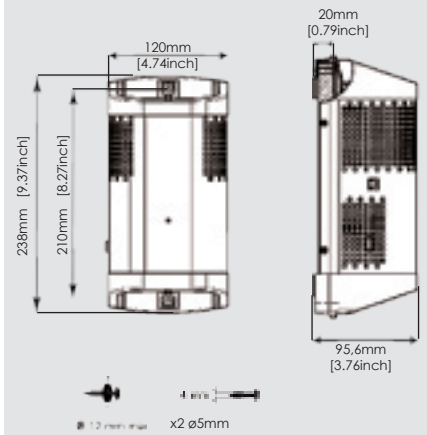


## CONNECTIONS

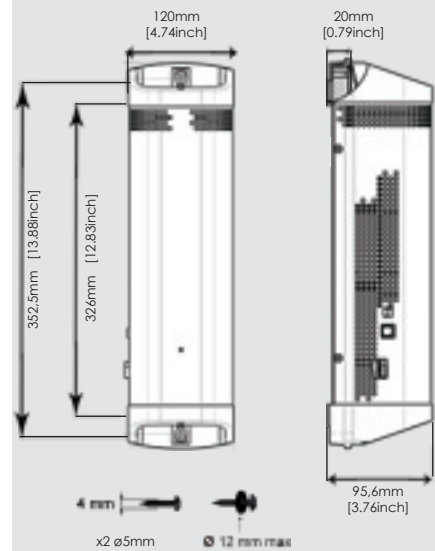


## OUTLINE DRAWING

### 12V-10A / 12V-15A



### 12V-25A / 12V-40A / 24V-20A



mdp electronics

144 route des Vernes  
74370 Pringy  
Tél. : 04 50 27 20 30  
[www.mdpelectronics.com](http://www.mdpelectronics.com)

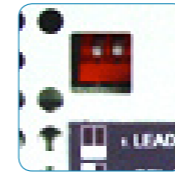


# first range

What if simplicity allowed you to go even further?



## To make your life easier:



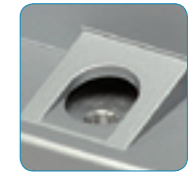
Load curve setting by micro-switch



Plug-in mains input connector



Easily accessible fuses



Quick and easy mounting



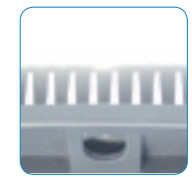
Charge level LED light



3 batteries at the same time



Silent and night mode



Rear heat sink

The first range of chargers is perfect for the broadest range of battery technologies, with a load capacity of up to 400 A at 12 V.

These compact chargers are ideally suited to recharging batteries in light vehicles (ambulances, repair vehicles, motorhomes).

The first charger is perfect for workshops, pleasure boats, computer cabinets and as starter batteries for generating sets.

Models	12V-10A	12V-15A	12V-25A	12V-40A	24V-20A
Battery capacity	20 - 100 Ah	30 - 150 Ah	50 - 250 Ah	80 - 400 Ah	40 - 200 Ah
Supply voltage	230V (+/-15%) 115V (optional)		115V/230V (+/-15%) automatic switching		
Frequency	50Hz - 60Hz (+/-10%)				
Cos phi	typically 0.6		typically 0.9		
Output	typically 80%				
Max consumption 115V/230V	-/1.3A	-/1.9A	4A/2A	7A/3.5A	
5x20mm mains fuse	T2A 250V	T3.15A 250V	T6A 250V	T10A 250V	T10A 250V
Number of outputs	3 isolated outputs - common negative				
Load setting	4 programmes, with a dip-switch type micro-switch				
Load curve	IUUO + automatic weekly equalisation				
Open lead battery	Vboost : 14.2V Vfloat : 13.2V		Vboost : 28.4V Vfloat : 26.4V		
Gel batteries, AGM, spiral	Vboost : 14.2V Vfloat : 13.7V		Vboost : 28.4V Vfloat : 27.4V		
Lead calcium batteries	Vboost : 14.8V Vfloat : 13.7V		Vboost : 29.6V Vfloat : 27.4V		
Power batteries, LifeSo4	Vboost : 14.2V Vfloat : 14.2V		Vboost : 28.4V Vfloat : 28.4V		
Equalisation	Automatic				
Voltage tolerance	+/- 2%				
Ripple	<1% pp (BW<20MHz)				
Max. charging current	10A	15A	25A	40A	20A

Models	12V-10A	12V-15A	12V-25A	12V-40A	24V-20A
Short circuit fuse	F15A 32V	F20A 32V	2xF15A 32V	2xF25A 32V	2xF15A 32V
Protection	Overload and short circuit at the output / excessive internal I <sup>2</sup> / Charging voltage too high Battery polarity reversal (short circuit fuse)				
Display	3-colour LED: 4 charging phases and 3 fault types				
Night mode	-	-	By push button		
Temperature	- 10°C to +50°C				
Storage	- 20°C to +70°C				
Humidity	10% to 95% (without condensation)				
Ventilation	Natural		Forced and thermostatically controlled		
Housing	Aluminium, aluminium sheet, epoxy paint, composite				
Mounting	2 x Ø4 mm screws				
Dimensions D x W x H mm [inch]	96 x 120 x 238 [3.76 x 4.74 x 9.37]			96 x 120 x 354 [3.76 x 4.74 x 13.88]	
Weight (kg)	1.30			1.90	
Mains supply W	3 points 230V, 4mm <sup>2</sup> max., plug supplied Ref. 770.813/G11-000 (Winsta, WAGO)				
Short circuit connection	40A, 10mm <sup>2</sup> max. Ref. PC 6-16/4-G1F-10,16 (PHOENIX CONTACT), plug supplied				
Protection	IP20				
Safety standards	EN60335-2-29 (2002)				
EMC standards	EN55014-1				
Warranty	2 years				