

EDSON[®] VISION SERIES

Marine Electronics Mounting System

FOR POWER & SAIL

**Mounts for Radar Domes,
Open Arrays, Satellite Domes,
Cameras, Searchlights,
Antennas and more.**



EASY THREE STEP ORDERING

Select Mount Style and Height



Select REQUIRED Mounting Plate



Select OPTIONAL Light Arm/Wing/Accessories



EDSON[®] VISION SERIES

Edson's all-new Vision Series Electronics Mounting System is a revolutionary design that provides the simplest, most attractive solution to your electronics mounting requirements.

- All-new sleek, modern design
- First all modular system — extremely versatile
- Easy to select and install for any radar, dome, light or camera combination
- Easy to add accessories - Light Arms, Mounting Wings, Extensions
- Upgradable for future additions and modifications
- Powder Coated Marine-Grade Aluminum Construction



Select Mount Style and Height

Aft Angled Radar or Satellite Dome Mounts

- 6", 12", 18", 24" and 36" tall
- Aft Raked 30 degrees
- 7" diameter base on #6801, #6802
- 10.5"W x 10"L base on #6803, #6804, #6805



6" - #6801



12" - #6802



18" - #6803



24" - #6804



36" - #6805



6" Mount
Shown with mounting plates and optional Light Arm and Anchor Light.

Aft Angled Heavy Duty Open Array Mounts

- 6" and 12" tall
- Aft Raked 30 degrees
- 7" diameter base on #6801
- 10.5"W x 10"L base on #6812



6" - #6801



12" - #6812



12" Heavy Duty Mount
Shown with mounting plates and optional Antenna Mounting Wing, Antenna Extension, Light Arm, Anchor Light and GPS Mount.

Vertical Radar, Satellite Dome Light or Camera Mounts

- 6", 12", and 18"
- Vertical
- Ideal for Radomes, Night Vision Camera and Spotlights
- 7" diameter base on #6873 and #6874.
- 10.5"W x 10"L base on #6875.



6" - #6873



12" - #6874



18" - #6875



#6873 - 6" Vertical Mounts
Shown with electronic-specific mounting plates

EDSON[®] VISION SERIES

Dual Mounts

- For Radar Dome/Sat Dome or 4' Open Array/Sat Dome
- 18" (sat dome) and 24" (open array)
- Aft Raked 30 degrees
- Two Mounting Plates Required (Open Array should only be mounted on lower arm)
- 10.5"W x 10"L base



18" - #6820
for Radar Dome/Sat Dome



24" - #6825
for 4' Open Array/Sat Dome



Dual Mount
Shown with mounting plates and Light Arm and Anchor Light.

Triple Mounts

- First production Triple Mount
- For Radar Dome/Sat Dome or 4' Open Array/Sat Dome + Spotlights, Cameras or Night Vision
- 36" tall
- Aft Raked 30 degrees
- Three Mounting Plates Required (Open Array should only be mounted on lower arm)
- 10.5"W x 10"L base



#6830
for Radar Dome/Sat Dome



#6835
for 4' Open Array/Sat Dome



First Production Triple Mount!
Shown with mounting plates and optional Antenna Mounting Wing, Antenna Extension, Light Arm, Anchor Light and GPS Mount.

Mast Mount

- For Sailboats and Trawlers
- Swivel Feet fit most masts
- Rivets Included



#6867



Mast Mount
Shown with mounting plate

Pole Mounts

- For Sailboats or Trawlers
- Uses same Mounting Plates and Accessories as all Vision Mounts
- See edsonmarine.com for additional support options.



Basic Pole - #6746

- Anodized Aluminum pole
- 90" tall x 2-3/8" dia.
- 1" Rail Support Bracket
- Deck Mount Base Flange

Deluxe Fixed Pole - #6747

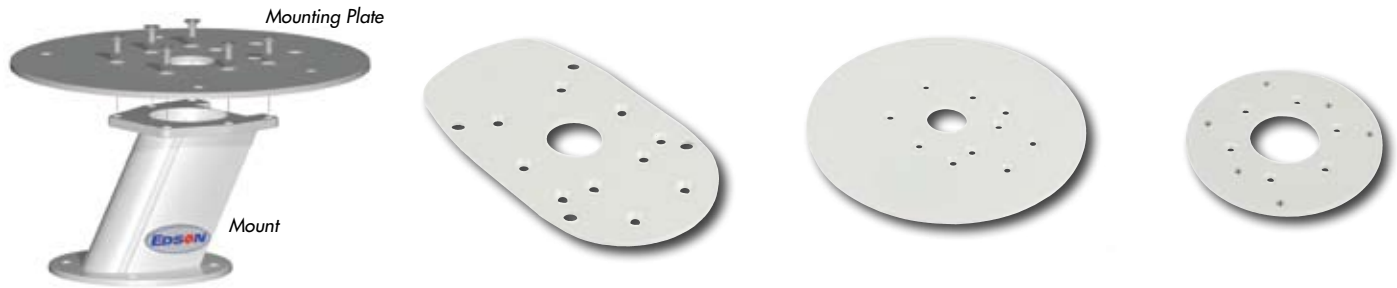
- White powder coated aluminum pole
- 144" tall x 3-1/2" dia.
- 55" Fiberglass thru-deck mounting tube

#6746

#6747

Choose Mounting Plate(s) for your electronics on the next page.

Select required Mounting Plate(s) by electronics manufacturer



UNIVERSAL FIT

	ITEM#
2/4kW and Broadband Radars, 14" dia. (most brands and models)	#6850
Universal Mounting Plate, 10.625" dia. (no pre-drilled holes)	#6887
Universal Mounting Plate, 15" dia. (no pre-drilled holes)	#6886

ACR

ACR RCL-100, RCL-50 Series Lights - 7" dia. (not for light arm)	#6868
---	-------

B&G

B&G Broadband Dome (BR24 & 3G)	#6853
--------------------------------	-------

FLIR

FLIR Navigator II - 7" dia. (not for light arm)	#6870
FLIR M-Series - 7" dia. (not for light arm)	#6871
FLIR M-Series - 10.625" dia.	#6862

FURUNO

Furuno 15" - 24" Radar Domes 2/4 kW	#6851
Furuno 4' / 6' Open Array Radar	#6851*

GARMIN

Garmin 18" & 24" HD Dome 4 kW Radar	#6852
Garmin 4' / 6' Open Array Radar	#6856*

GEONAV

Geonav GRH4D Radar Dome	#6851
Geonav GRH44&45 Open Array	#6857*

INTELLIAN

Intellian i1, i2, i3	#6860
Intellian i4, K4, d4	#6859
Intellian i6, K6, d6, S60, FB500	#6861
Intellian FB150, FB250	#6872

KVH

KVH M1, M2, M3, V3	#6860
KVH M5, Trac 50	#6859
KVH M7, HD7, TracPhone V7, FB500	#6861
KVH FB150, FB250 for 10.8" and 13.5" diameter domes	#6872

LOWRANCE

Broadband 20" Dome and 2kW Radar Dome	#6853
Lowrance HD 4kW Radar Dome (LRA2400)	#6854
Lowrance 4' / 6' Open Array Radar	#6857*

NOBELTEC

	ITEM#
Nobeltec IR2-4D Dome, IR2-4x, 6x, 12x Array	#6885*

RAYMARINE

Raymarine 2/4 kW Radar Dome	#6855
Raymarine 4' / 6' Open Array Radar	#6858*
Raymarine 33 & 37STV	#6860
Raymarine 45STV	#6859
Raymarine 60STV	#6861
Raymarine T-Series Night Vision - 7" (not for light arm)	#6871
Raymarine T-Series Night Vision - 10.625"	#6862

SEA KING

Sea King 15	#6860
Sea King 18	#6859

SEA TEL

Sea Tel C14	#6860
Sea Tel C18-24	#6859

SIMRAD

Broadband 20" Dome and 2kW Radar Dome	#6853
Simrad HD 4kW Radar Dome (DX64S)	#6854
Simrad 4' / 6' Open Array Radar	#6857*

SI-TEX

Si-Tex 2/4 kW Radar Dome	#6851
Si-Tex MDS-10 4' Open Array Radar	#6857*

****Open Array Radars must only be mounted to Heavy Duty Open Array Mounts - #6801, #6812, 6" Vertical mount #6873, lower arm on #6825 Dual Mount, or lower arm on #6835 Triple Mount.**

Please contact Edson if your brand or model is not shown.

Choose Tower Accessories on the next page.

Select optional Adapters, Light Arms, Mounting Wings and Accessories

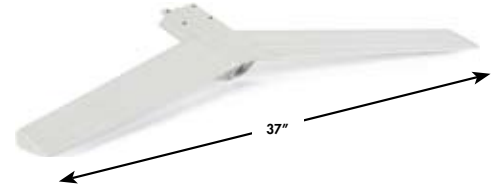
#6863



#6879



Receiver or Wing is required to mount Light Arms



LIGHT ARM RECEIVERS

Light Arm Receiver for aft angled mounts
Light Arm Receiver for vertical mounts

ITEM#

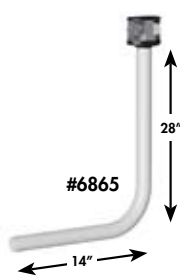
#6863
#6879

ANTENNA MOUNTING WINGS

Antenna Mounting Wing for aft angled mounts
Antenna Mounting Wing for vertical mounts

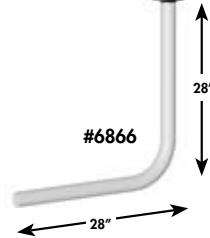
ITEM#

#6864
#6880



#6865

Shown with optional Anchor Light



#6866

LIGHT ARMS

Light Arm for Radar Domes and Sat Domes
Light Arm for Open Array Radars

ITEM#

#6865
#6866



#980-3-100



#6740

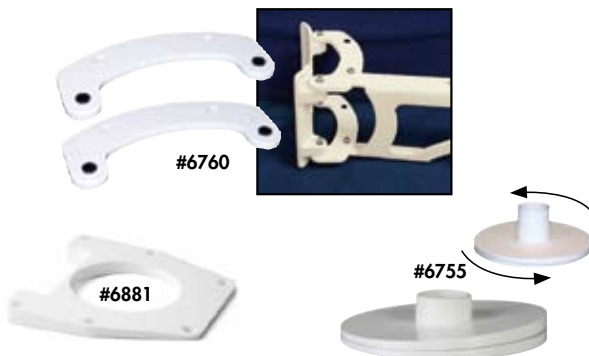
(shown with optional Anchor Light and Antenna)

ANTENNA / LIGHT EXTENSIONS

3" Antenna Extension for Wing
13" Antenna Extension for Wing
GPS Mount with Light Extension

ITEM#

#980-3-100
#980-13-100
#6740



#6760

#6881

#6755

ADDITIONAL ACCESSORIES

Wedge Kit for 0-4° angle adjustment - 7" diameter
Vision 4 degree wedge for under mounting plate
Witches Hat, black rubber for water protection under mounts
Mast Mount Platform Standoff for Spinnaker Track (pair)

ITEM#

#6755
#6881
#6884
#6760



#6750



#6751

ANCHOR / STEAMING LIGHTS

Perko Anchor/Steaming Light (incandescent) - 50" pigtail
Atwood Anchor/Steaming Light (LED) - 72" pigtail

ITEM#

#6750
#6751



YOUR EDSON DEALER:



Additional Accessories



STAINLESS ANTENNA STANDOFFS

These strong and attractive standoffs will limit the amount of wear and tear on your antennas while powering through rough seas. Made from investment cast 316 stainless, they will never break like plastic.

Fitting all antennas up to 1.5" in diameter, they are available in three sizes, virtually eliminating the need to shim the standoff or antenna base. The clasp is held closed with a quick release pin allowing for quick antenna takedown to go under bridges or for trailering. Each clasp is padded providing a secure, rattle free closure. Order by the desired stand-off distance (to center of antenna).



3" Stainless Antenna Standoff	#535-3-125
5" Stainless Antenna Standoff	#535-5-125
7" Stainless Antenna Standoff	#535-7-125



#2000-10x10
Chartplotter Housing

INSTRUMENT DISPLAY HOUSINGS

Edson has designed Custom Housings for Radar and Chartplotter Display as well as a variety of autopilot, depth and other instruments. They add a ship shape appearance, protect the back of the displays, and provide a more robust mount. They allow Pedestal, Overhead, Deck/Bulkhead, Console, and Pod Arm Mounting Options.

Visit edsonmarine.com for Edson's full Instrument Housing Selection



FLUSH MOUNT BRACKETS



Edson "Flushmount Kits" ease dash installations of VHF radios & larger display monitors. Stainless steel construction.

Flush Mount Kit for VHF/Small Displays	#6765
Flush Mount Kit for Large Displays	#6770

GPS ANTENNA RAIL MOUNTS



Edson's Stainless GPS Antenna Rail Mount Arm features a unique design that keeps your wiring completely hidden inside the mount and railing. The two-piece design clamps to any 1", 1-1/8" or 1-1/4" horizontal railing. Male 1"-14 threads accept most common GPS or VHF antennas. Cast of solid 316 stainless with rubber bushings.



Stainless GPS Antenna Rail Mount	#831ST-1-14
---	--------------------

Edson International
146 Duchaine Blvd., New Bedford, MA 02745
1-800-393-9661 • info@edsonintl.com
www.edsonmarine.com

CALL TODAY - All phone calls are answered by real people, right here in New Bedford, MA!
Celebrating over 150 years of world renowned customer service.



Edson International Inc. - Vision Series Electronics Mounting System Price List

SB-316-11

6/28/11

Part #	Description	List price
VISION SERIES MOUNTS (mounting plate required to complete mount, sold separately)		
AFT ANGLED MOUNTS for Radar Domes, Sat Domes, Lights, Cameras, & Night Vision		
6801	6" Aft Angled Mount (mounting plate required - sold separately)	\$ 189
6802	12" Aft Angled Mount (mounting plate required - sold separately)	\$ 219
6803	18" Aft Angled Mount (mounting plate required - sold separately)	\$ 259
6804	24" Aft Angled Mount (mounting plate required - sold separately)	\$ 289
6805	36" Aft Angled Mount (mounting plate required - sold separately)	\$ 369
AFT ANGLED HEAVY DUTY MOUNTS for heavier electronics and OPEN ARRAY Radars		
6801	6" Aft Angled Mount (mounting plate required - sold separately)	\$ 189
6812	12" Aft Angled Mount, heavy duty, for heavier electronics (mounting plate required - sold separately)	\$ 329
VERTICAL MOUNTS for Radar Domes, Sat Domes, Lights, Cameras, & Night Vision		
6873	6" Vertical, Round, Mount (mounting plate required - sold separately)	\$ 179
6874	12" Vertical, Round, Mount (mounting plate required - sold separately)	\$ 219
6875	18" Vertical, Round, Mount (mounting plate required - sold separately)	\$ 259
SPECIAL VERTICAL MOUNTS, (round top plate on mount, not compatible with light arms)		
6893	3" Vertical, Round, Mount (not for light arm, round top plate, mounting plate required - sold separately)	\$ 179
6890	6" Vertical, Round, Mount (not for light arm, round top plate, mounting plate required - sold separately)	\$ 179
6877	6" Vertical, Round, Mount, 16 degree Angle on base (not for light arm) (mounting plate required - sold separately)	\$ 199
6891	12" Vertical, Round, Mount (not for light arm, round top plate, mounting plate required - sold separately)	\$ 219
DUAL MOUNTS for Radars, and Sat Domes		
6820	Dual Mount for Dome Radars and Sat Domes, 18" H (2 mounting plates required - sold separately)	\$ 649
6825	Dual Mount for 4' Open Array Radars and Sat Domes, 24" H (2 mounting plates required - sold separately)	\$ 1,019
TRIPLE MOUNTS for Radar, Lights, and Sat Domes		
6830	Triple Mount for Dome Radars, 36" H (3 mounting plates required - sold separately)	\$ 809
6835	Triple Mount for 4' Open Array Radars, 36" H (3 mounting plates required - sold separately)	\$ 1,179
MAST MOUNTS for Sailboat and Trawler masts		
6867	Mast Mount Platform (mounting plate required - sold separately)	\$ 249
POLE MOUNTS		
6746	Vision Pole Mount 2 3/8" dia. x 90" L, Rail Bracket & Flange (mounting plate required - sold separately)	\$ 602
6747	Vision Pole Mount 3.5" dia. x 144" L, Fiberglass sleeve 55" (mounting plate required - sold separately)	\$ 1,065
VISION SERIES MOUNTING PLATES (required to complete mount, sold separately)		
UNIVERSAL		
6850	Universal Radar Dome Vision MP for 2/4kW and Broadband Radars, 14" dia. (for most brands and models) *	\$ 90
* For Simrad and Lowrance - Use mounting plate 6853 for 2 kW and 6854 for 4 kW radar dome		
6886	Universal Vision Mounting Plate, 15" dia (no pre-drilled holes for electronics)	\$ 90
6887	Universal Vision Mounting Plate, 10.625" dia. (no pre-drilled holes for electronics)	\$ 90
ACR		
6868	ACR RCL-100, RCL-50 Series Lights Mounting Plate, 7" dia. (not for light arm)	\$ 90
B&G		
6853	B&G Broadband Dome (BR24 & 3G)	\$ 90
FLIR		
6870	FLIR Navigator II Mounting Plate, 7" dia. (not for Light Arm)	\$ 90
6871	Flir M-Series Mounting Plate, 7" dia. (not for Light Arm)	\$ 90
6862	Flir M-Series Mounting Plate, 10.625" dia. (for Light Arm)	\$ 90
FURUNO		
6851	Furuno 15" - 24" 2/4 kW Radar Dome Mounting Plate, 9"x9"	\$ 90
6851	Furuno 4' & 6' Open Array Radar Mounting Plate, 9"x 9" (6856 can also be used)	\$ 90
GARMIN		
6852	Garmin 18" & 24" HD 4 kW Radar Dome Mounting Plate, 14" dia.	\$ 90
6856	Garmin 4' & 6' Open Array Radar Mounting Plate, 12.625" x 13"	\$ 90
GEONAV		
6851	Geonav GRH4D Radar Dome Mounting Plate, 9"x9"	\$ 90
6857	Geonav GRH44&45 Open Array Radar Mounting Plate, 12.5"Wx10"L	\$ 90
INTELLIAN		
6860	Intellian i1, i2, i3, Mounting Plate, 12.125" dia.	\$ 90
6859	Intellian i4, K4, d4, Mounting Plate, 15.5" dia.	\$ 90
6861	Intellian i6, K6, d6, S60, FB500, Mounting Plate, 20" dia.	\$ 135

Edson International Inc. - Vision Series Electronics Mounting System Price List			SB-316-11
			6/28/11
Part #	Description	List price	
6872	FB150, FB250 Mounting Plate, 10.625 dia.	\$ 90	
KVH			
6860	KVH M1, M2, M3, V3 Mounting Plate, 12.125 dia.	\$ 90	
6859	KVH M5, Trac 50 Mounting Plate, 15.5" dia.	\$ 90	
6861	KVH M7, HD7, TracPhone V7, FB500 Mounting Plate, 20" dia.	\$ 135	
6872	KVH FB150, FB250, Mounting Plate for 10.8" or 13.5" dia. Dome, 10.625" dia.	\$ 90	
LOWRANCE			
6853	Lowrance Broadband Dome (BR24&3G), and 2kW HD Radar Dome (LRA1800) Mounting Plate	\$ 90	
6854	Lowrance HD 4kW Radar Dome (LRA2400) Mounting Plate	\$ 90	
6857	Lowrance 4' & 6' Open Array Radar Mounting Plate	\$ 90	
NOBELTEC			
6885	Nobeltec IR2-4D Dome, IR2-4x, 6x, 12x Array Mounting Plate	\$ 90	
RAYMARINE			
6855	Raymarine 2/4 kW Radar Dome Mounting Plate	\$ 90	
6858	Raymarine 4' & 6' Open Array Radar Mounting Plate	\$ 90	
6860	Raymarine sat dome 33&37STV Mounting Plate	\$ 90	
6859	Raymarine sat dome 45STV Mounting Plate	\$ 90	
6861	Raymarine sat dome 60STV Mounting Plate	\$ 135	
6871	Raymarine T-Series Night Vision T300 - T450 MP, 7" diam. (not for Light Arm)	\$ 90	
6862	Raymarine T-Series Night Vision T300 - T450 MP, 10.625" diam. (for Light Arm)	\$ 90	
SEA KING			
6860	SKing 15 Mounting Plate	\$ 90	
6859	SKing 18 Mounting Plate	\$ 90	
SEA TEL			
6860	Sea Tel C14 Mounting Plate	\$ 90	
6859	Sea Tel C18-24 Mounting Plate	\$ 90	
SIMRAD			
6853	Simrad Broadband Dome (BR24&3G), and 2kW HD Radar Dome (DX42S) Mounting Plate	\$ 90	
6854	Simrad HD 4kW Radar Dome (DX64S) Mounting Plate	\$ 90	
6857	Simrad 4' & 6' Open Array Radar Mounting Plate	\$ 90	
SI-TEX			
6851	Si-Tex 2/4 kW Radar Dome Mounting Plate	\$ 90	
6857	Si-Tex MDS-10 4' Open Array Radar Mounting Plate	\$ 90	
THRANE & THRANE			
6872	FB150, FB250 Mounting Plate	\$ 90	
6861	Sailor FB500, Fleet 55+, Mounting Plate	\$ 135	
ACCESSORIES, Light Arms, Receivers, Wings, Lights, Wedges, Etc.			
6863	Vision Series Light Arm Receiver for aft Angled mounts, (attaches to mounting plate to receive light arm)	\$ 30	
6879	Vision Series Light Arm Receiver for Vertical mounts, (attaches to mounting plate to receive light arm)	\$ 30	
6865	Vision Series Light Arm for Radar Domes and Sat Domes (requires 6863, 6879, or Wing receiver)	\$ 129	
6866	Vision Series Light Arm for 4' Open Array Radars (requires 6863 or 6879, or Wing receiver)	\$ 139	
6864	Vision Series Wing with Light Arm Receiver for aft Angled mounts (uses 6865 light arm)	\$ 249	
6880	Vision Series Wing with Light Arm Receiver for Vertical mounts (uses 6865 light arm)	\$ 249	
6750	Combination Anchor/Steaming Light for light arms (Perko 1197 incand. with 50" pigtail)	\$ 47	
6751	LED Combination Anchor/Steaming Light for light arms (Attwood 780 with 72" pigtail)	\$ 89	
6740	GPS Mount 1x14 for Light Arm powder coated	\$ 129	
6755	Wedge Kit, 7" dia., adjusts 0-4 degrees, Strbrd, for 7" dia. base plates	\$ 74	
6881	Vision 4 degree Wedge (fits between top of mount and bottom of mounting plate)	\$ 39	
6882	Vision Series Univ. Top casting for Pole Mounts	\$ 142	
980-3-100	3" Antenna Extension for wing, stainless	\$ 69	
980-13-100	13" Antenna Extension for wing, stainless	\$ 87	
6765	Flush Mount Kit for VHF/Small Displays	\$ 45	
6770	Flush Mount Kit for Large Displays	\$ 53	
6760	Mast Mount Standoff extender for Spinnaker Track Clearance powder coated (pair)	\$ 79	
Can't find what you need? Call Edson's NavCom hot line at 800-393-9661			
www.EdsonMarine.com/navcom Info@edsonintl.com			
Edson Intl. 146 Duchaine Blvd. New Bedford, MA 02745-1292			
Prices are subject to change without notice.			
Due to many model changes, please confirm bolt pattern on your electronics			