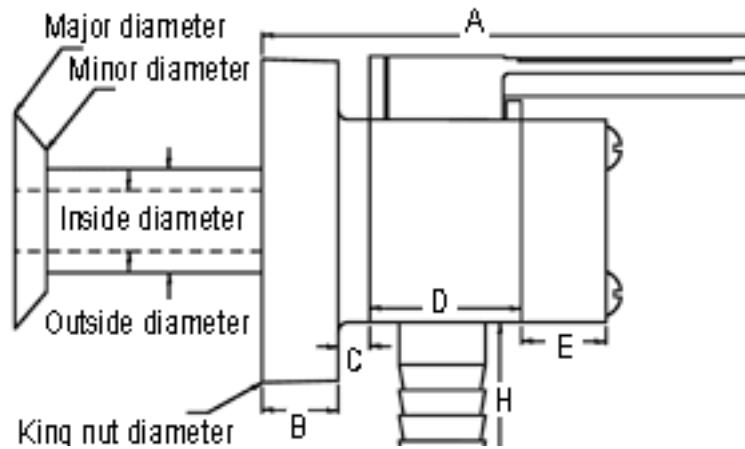
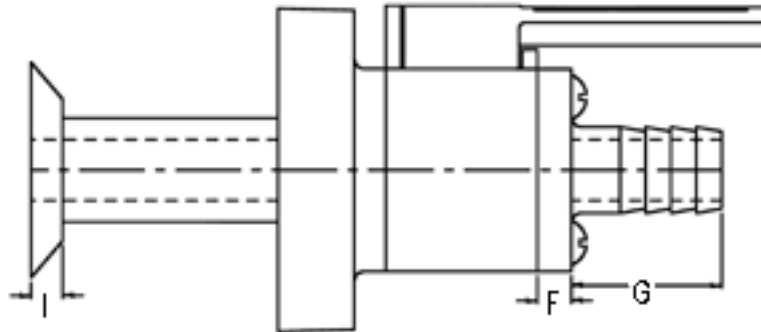




## OEM SMART VALVE THRU HULL



DIMENSION	0.50" (12.70mm) & 0.75" (19.05mm)	1.00" (25.40mm) & 1.25" (31.75mm)	1.50" (38.10mm) & 2.00" (50.80mm)
MAJOR DIAMETER	1.73" (43.94mm)	2.20" (55.88mm)	2.29" (70.86mm)
MINOR DIAMETER	1.28" (32.51mm)	1.70" (43.18mm)	2.18" (55.37mm)
OUTSIDE DIAMETER	1.10" (27.94mm)	1.60" (40.64mm)	2.10" (53.34mm)
INSIDE DIAMETER	0.62" (15.74mm)	1.05" (26.67mm)	1.64" (41.65mm)
KING NUT DIAMETER	3.13" (79.50mm)	3.75" (95.25mm)	4.21" (106.93mm)
A	4.48" (113.79mm)	6.19" (157.22mm)	7.63" (193.80mm)
B	0.91" (23.11mm)	0.98" (25.00mm)	1.10" (27.94mm)
C	0.48" (12.19mm)	0.31" (7.84mm)	0.23" (5.84mm)
D	1.20" (30.48mm)	1.87" (47.49mm)	1.57" (39.87mm)
E	0.52" (13.20mm)	0.75" (19.05mm)	1.35" (34.29mm)
F	0.53" (13.46mm)	0.75" (19.05mm)	0.78" (19.81mm)
G	1.31" (33.27mm)	1.00" (25.40mm) = 1.25" (31.75mm) 1.25" (31.75mm) = 1.50" (38.10mm)	1.50" (38.10mm)
H	1.44" (36.57mm)	1.50" (38.10mm)	1.75" (44.45mm)
I	0.24" (6.09mm)	0.23" (5.84mm)	0.24" (6.09mm)

### Forespar®

22322 Gilberto Rancho Santa Margarita, CA. 92688

Ph: 949-858-8820 Fax: 949-858-0505

[www.forespar.com](http://www.forespar.com) [sales@forespar.com](mailto:sales@forespar.com)

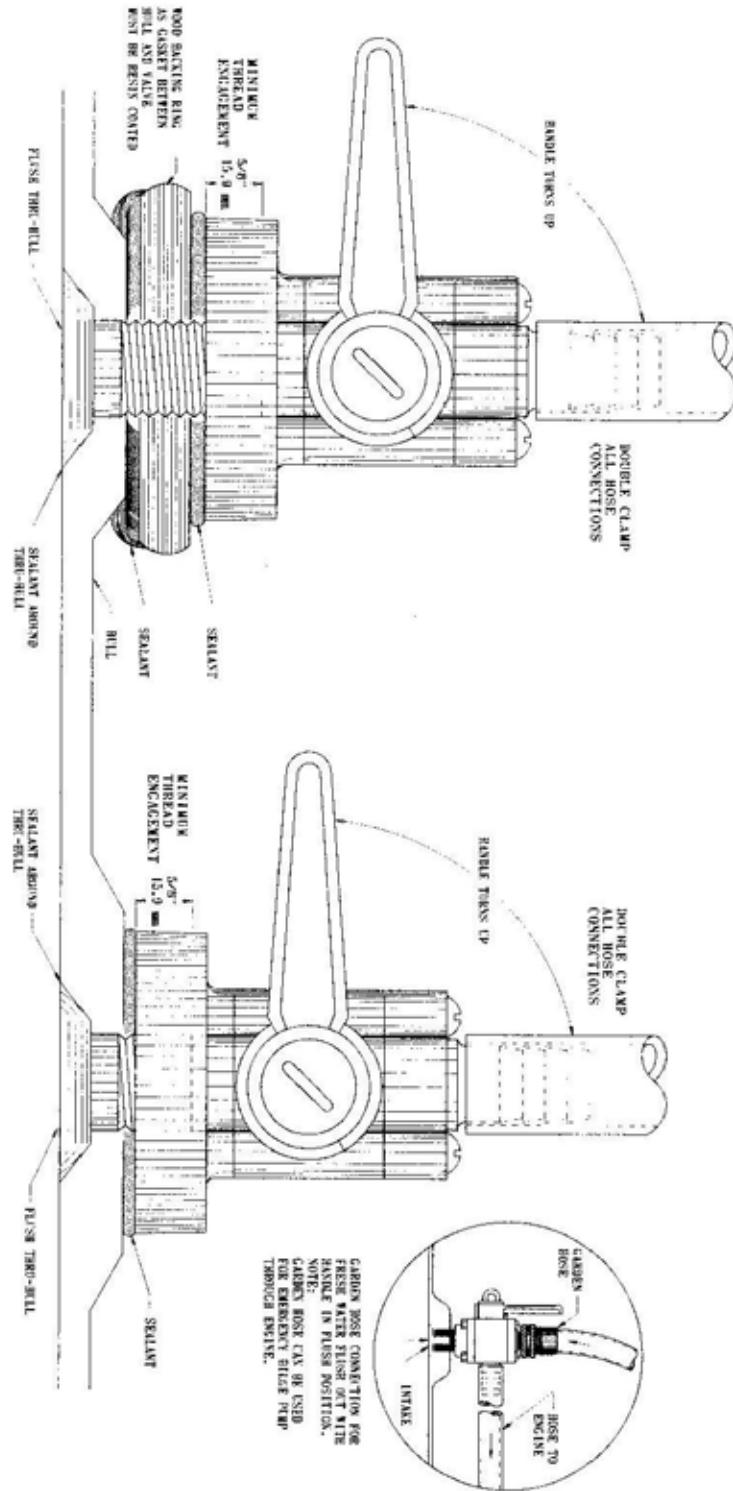
[www.facebook.com/foresparsailing](http://www.facebook.com/foresparsailing) [www.twitter.com/foresparsailing](http://www.twitter.com/foresparsailing)



# FORESPAR®

**DIAGRAM  
INFO**

## OEM SMART VALVE THRU HULL



### Forespar®

22322 Gilberto Rancho Santa Margarita, CA. 92688

Ph: 949-858-8820 Fax: 949-858-0505

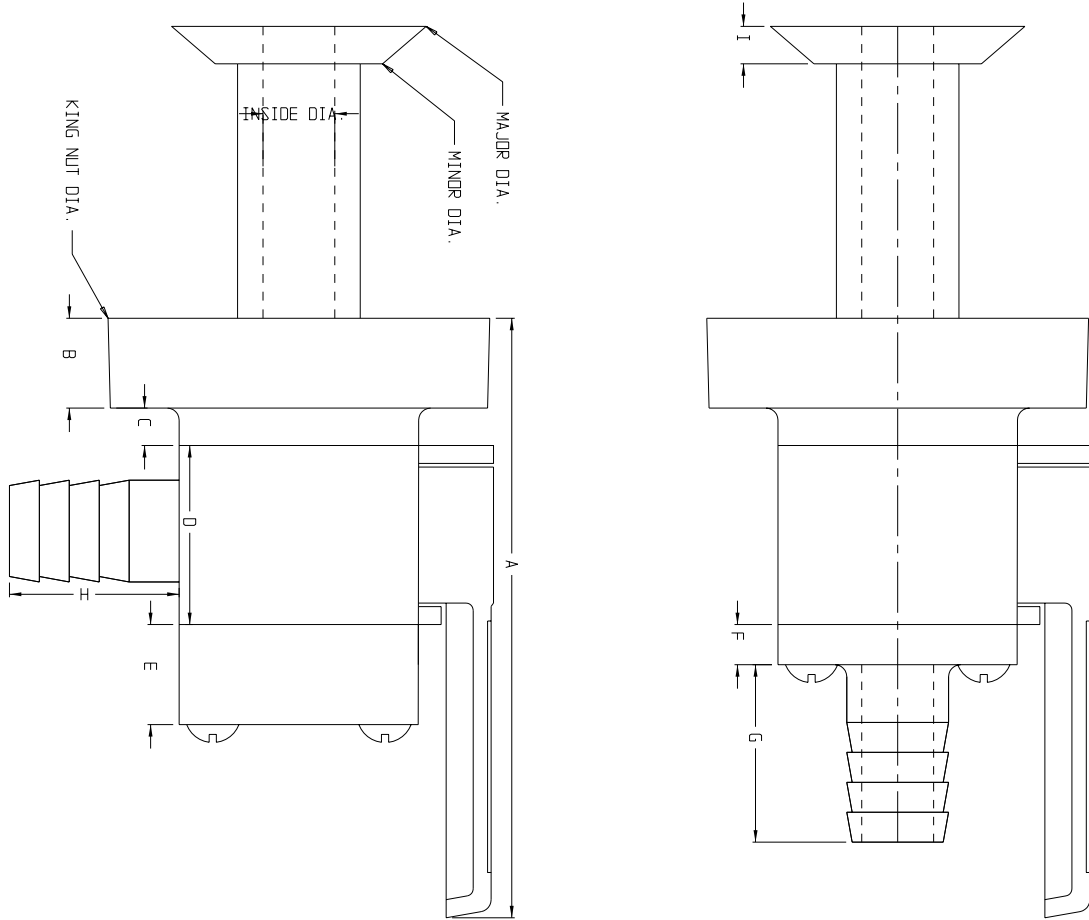
[www.forespar.com](http://www.forespar.com)

[sales@forespar.com](mailto:sales@forespar.com)

[www.facebook.com/foresparsailing](http://www.facebook.com/foresparsailing) [www.twitter.com/foresparsailing](http://www.twitter.com/foresparsailing)



## OEM SMART VALVE THRU HULL



DIMENSION	1/2" & 3/4"	1" & 1-1/4"	1-1/2" & 2"
MAJOR DIA.	1.73	2.20	2.79
MINOR DIA.	1.28	1.70	2.18
INSIDE DIA.	.62	1.05	1.64
KING NUT DIA.	3.13	3.75	4.21
A	4.48	6.19	7.63
B	.91	.98	1.10
C	.48	.31	.23
D	1.20	1.87	1.57
E	.52	.75	1.35
F	.53	.75	.78
G	1.31	1"=1.25 1-1/4"=1.50	1.50
H	1.44	1.50	1.75
I	.24	.23	.24

ALL DIMENSIONS IN INCHES