

This guide provides the basic operating procedures for this equipment. For detailed information, see the Operator's Manual on the WEB site. You can get the latest version of the manual by accessing the quick response code at the back of this guide. Connection of sensors required.

iPhone, iPod and iPad are trademarks of Apple Inc. Android is a trademark of Google Inc. All brand and product names are trademarks, registered trademarks or service marks of their respective holders. The screenshots used in this guide were mainly taken from the TZT19F.

Operational Overview

Icon (home/displays), power switch operations

TZT16F/TZT19F



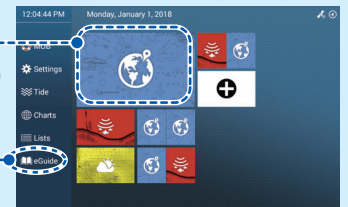
Home icon
Displays the home screen.

TZT12F
(Right side of the Panel)



Display icons
(max. 16 on home screen)

"eGuide" provides an abbreviated operator's guide.



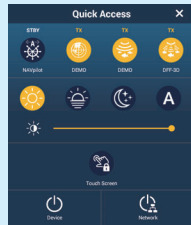
Home screen

Power off

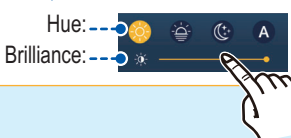
Device: Powers off this unit.
Network: Powers off all NavNet TZtouch3 units in network.

Power switch

- Turns on power
- Shows [Quick Access] window.

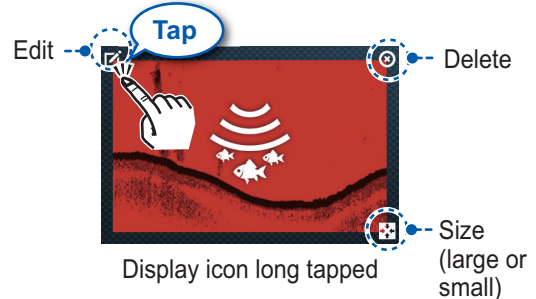


Brilliance, Hue



How to edit a display icon

Long tap a display icon to edit, delete, resize, or change its location.

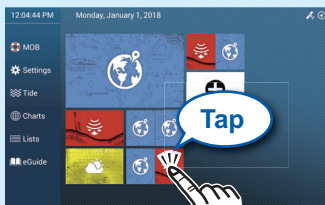


How to select a display

Tap a display icon on the home screen

OR

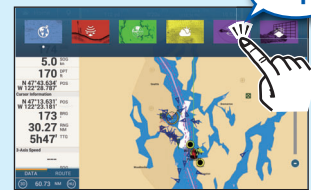
Tap a display icon on the quick page



Home screen



Swipe downward from top of display



Quick page



Touchscreen operations

Tap



- Select an item on a menu.
- Select an object to show the corresponding pop-up menu.

Drag, swipe



- Move the chart.
- Scroll the menu.
- Show slide menu, layer menu.

Pinch



Zoom in Zoom out

- Zoom in, zoom out the plotter and weather displays.
- Change the range on the radar display.

Slider bar

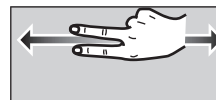
Tap operation also available.

Two finger tap



Do the function assigned to [Function Gesture] in the [Settings] - [General] menu.

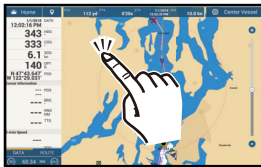
Two finger drag



Change the viewpoint position on the 3D display.

Menu operation

Pop-up menu



Tap screen (applicable point, object, etc.)



Pop-up menu



Tap the required function.
(">" indicates additional options.)

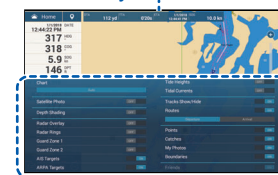
Layer menu



Swipe upward from the bottom edge.



Layer menu



Tap the required function.

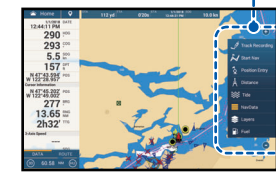
Slide-out menu



Swipe leftward from the right edge.



Slide menu

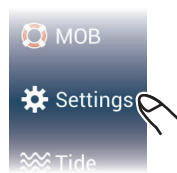


Tap the required function.
Icon color and function state
Yellow: ON, White: OFF

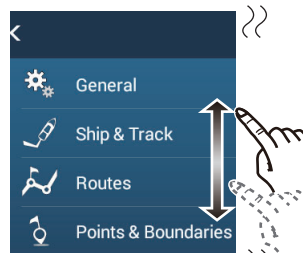
Settings menu



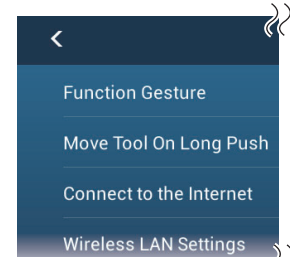
Tap the [Home] icon.



Tap [Settings].

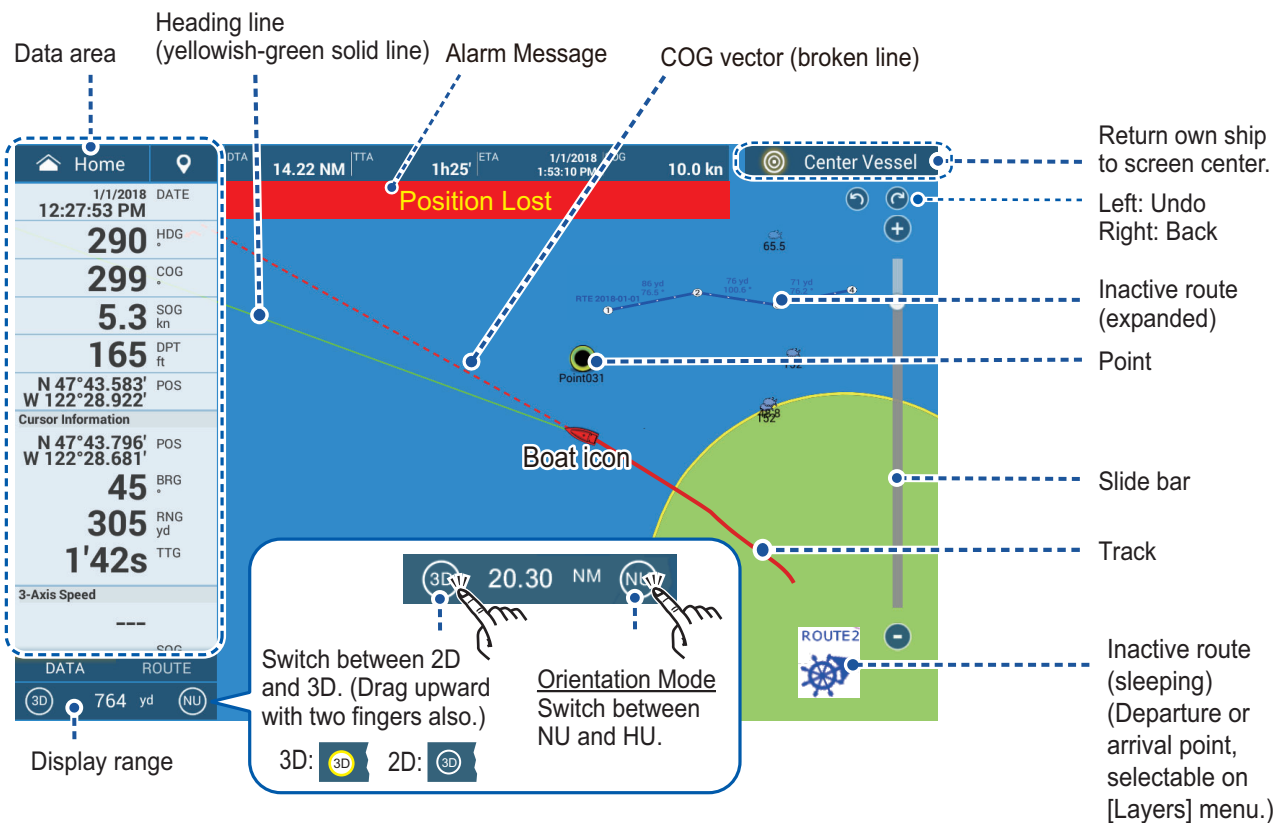


Drag menu to find required item, then tap item.



Tap the required option.

Plotter



Data Area (Data Box)

Swipe from the left edge of the screen rightward to show the data area at the left edge of the screen. To hide the data area, swipe opposite direction.

Data box settings

To add a data box;

- 1 Tap empty space on the data box or [+Add NavData].
- 2 Tap a data to add.

To delete a data box, or change the displayed data;

- 1 Tap the data box to delete or change.
- 2 To delete the data box: Tap the [Delete]. To change the data: Tap the data to display.

Tap [Change Type] to change the data display method among Graphic (analog), Numeric (digital) and Graph.

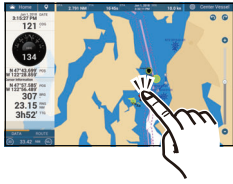
Tap [Close] to finish.

Grip icon: Drag the grip icon to move the data box.

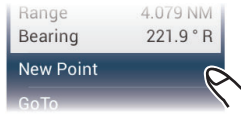
Points/boundaries

Points can be entered on the plotter display (radar and fish finder displays also) to mark important locations such as a good fishing spot. Point attributes (position, symbol type, color, etc.) are recorded to the points list. Also, boundaries can be set at the position desired (net position, area to avoid, etc.)

How to enter a point



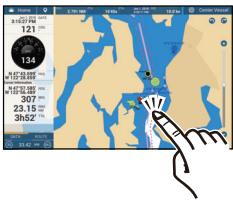
Tap where to enter a point.



The point is entered on the screen.

How to set a point as destination

On-screen point

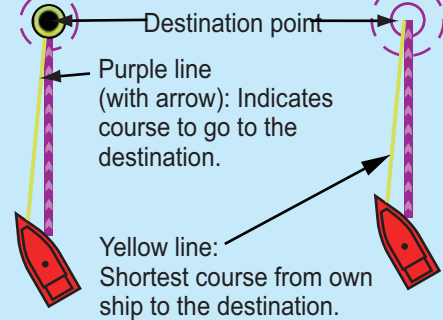


Tap a point or the location to set as destination.

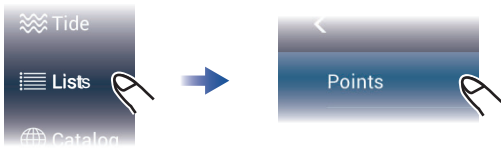


If a point was tapped.

On-screen point Selected location

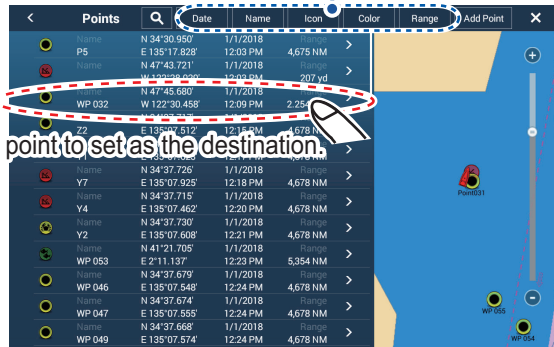


Points list

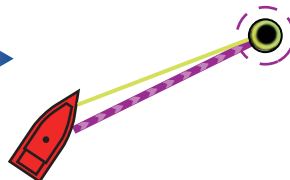
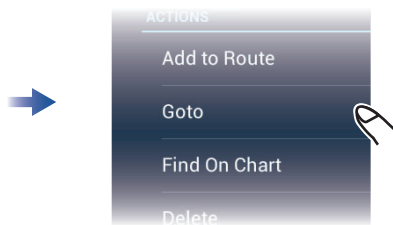


Tap [Lists] on the home screen.

Sort the list by date, name, icon, color, range.



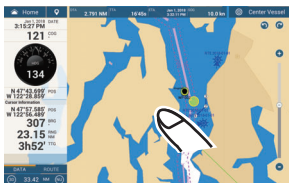
Tap the point to set as the destination.



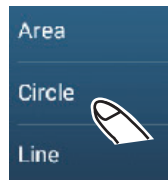
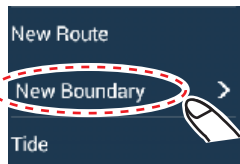
Notice

Note: [Find on Chart] puts the selected point at the screen center.

How to set a boundary



Tap the position where to set a boundary.



Tap the shape to use for the boundary.

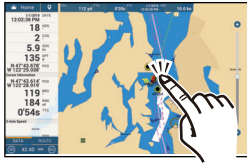
[Area]/[Line]: Tap necessary points to complete the boundary, referring to "Route" on the next page.

[Circle]: Drag icons to adjust the size and position, and then tap [End Boundary].

Routes

A route is comprised of a series of waypoints leading to a destination. Routes are saved to the routes list.

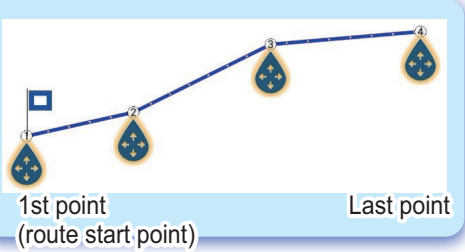
How to create a new route



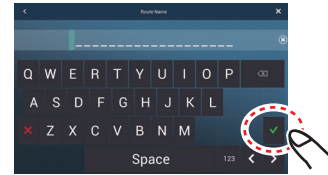
Tap the first point for the route.



Tap the next point for the route. Repeat to enter all points for the route.



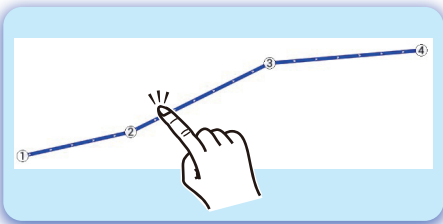
At the last point
End Route
(Top right corner)



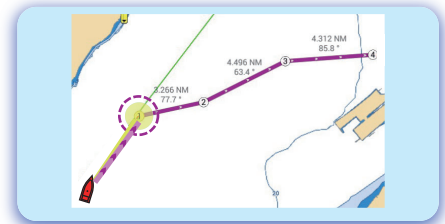
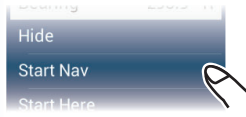
Enter a name for the route, then tap [✓].

How to follow a route

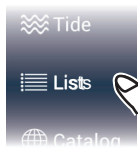
On-screen route



Tap a leg of the route.



Routes list



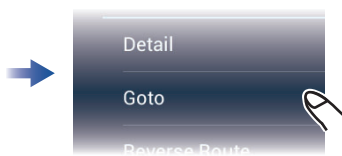
Home screen



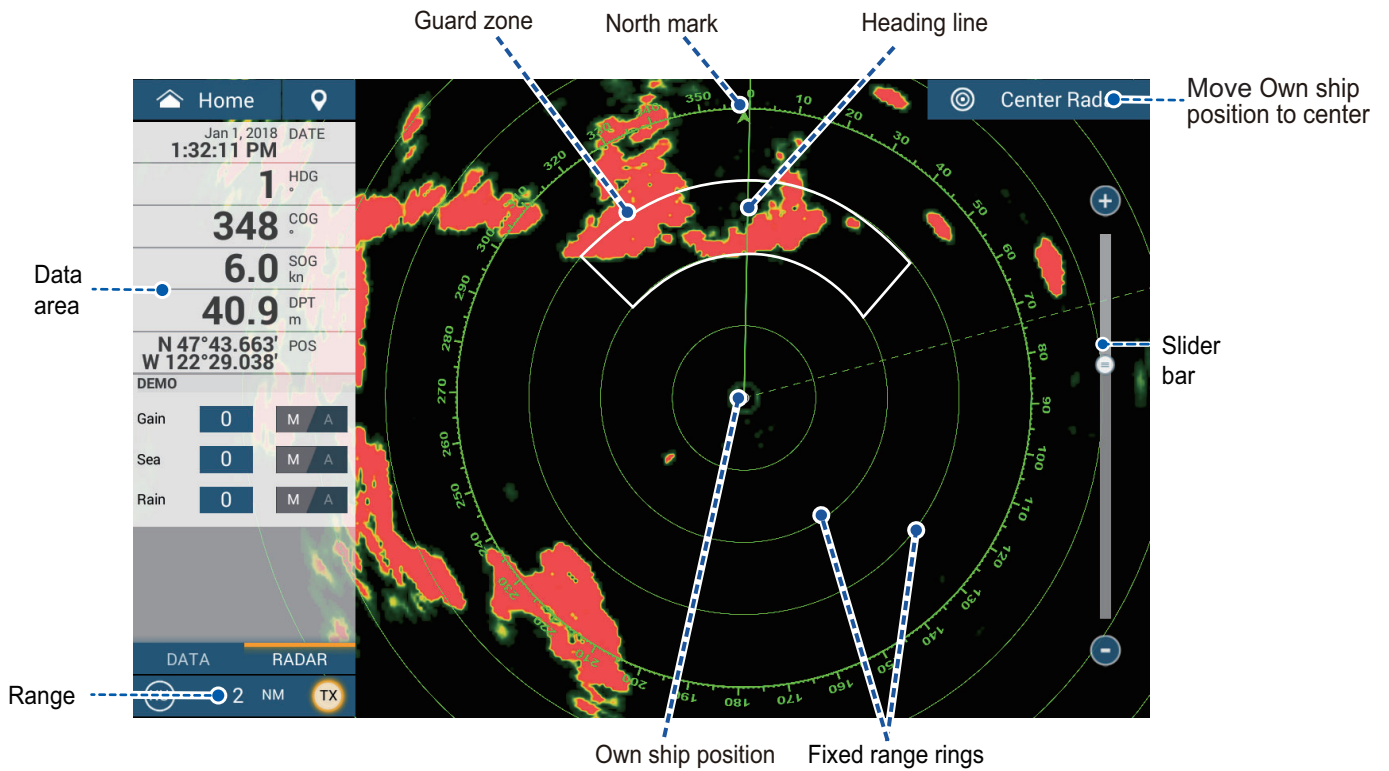
Sort list by date, name, color, length or range.



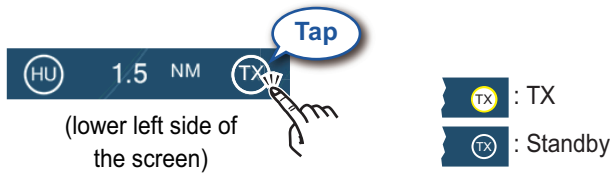
Tap the route.



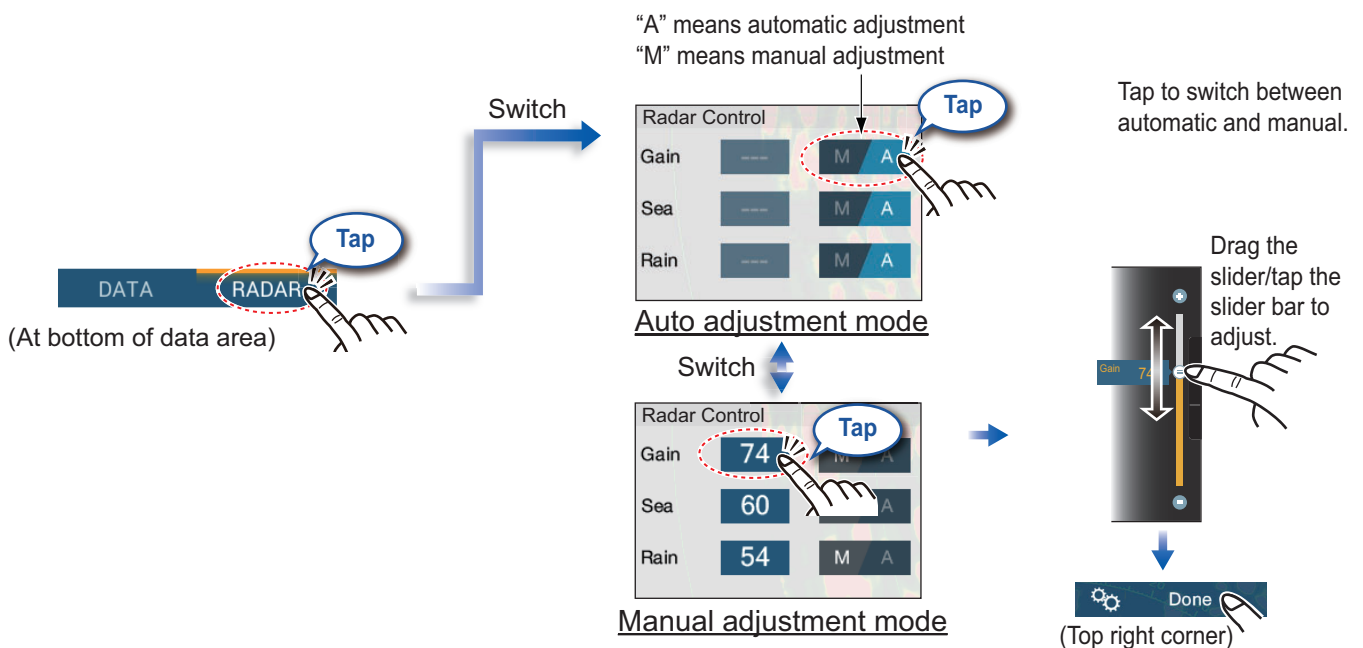
Radar



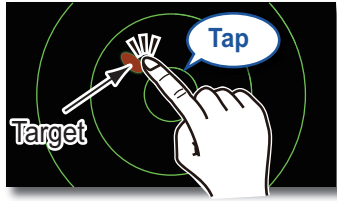
How to switch between standby and TX



How to adjust the gain / sea clutter / rain clutter



How to measure the range, bearing from own ship to a target

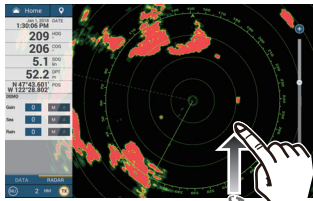


Tap a target to show its range and bearing from own ship.

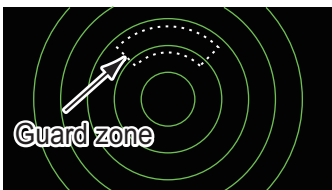
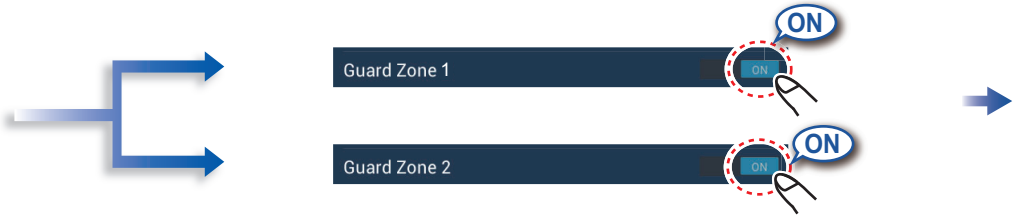


How to set a guard zone

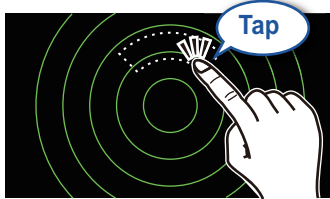
A guard zone alerts you (with aural and visual alarms) when a radar target enters the area you specify.



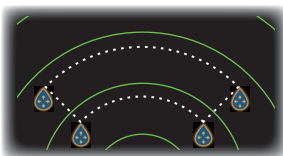
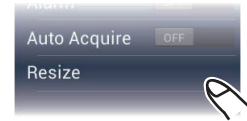
Open the [Layers] menu.



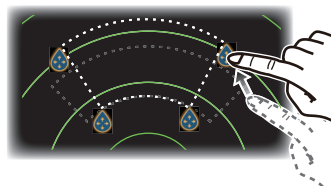
The guard zone appears in dashed lines.



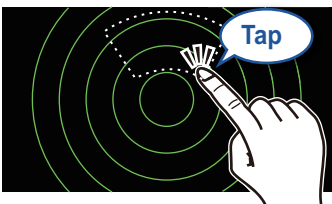
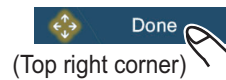
Tap dashed line on guard zone.



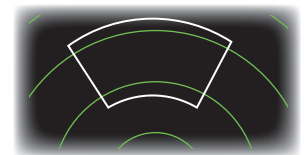
An icon appears at each corner of the guard zone.



Drag the icons to set guard zone.



Tap the guard zone again.

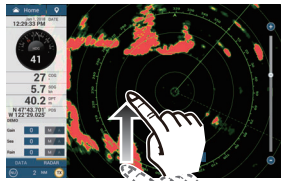


The dashed lines change to solid lines, indicating the guard zone is active.

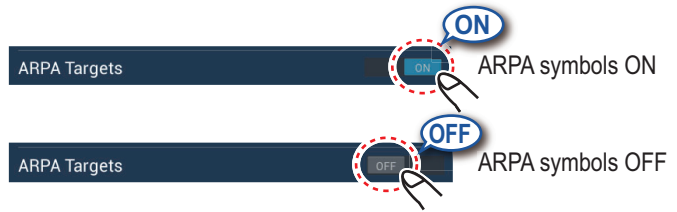
ARPA Operation

ARPA is an anti-collision aid that tracks the movement of other ships to help prevent collision. ARPA not only tracks other ships but also provides their navigation data. Targets can be acquired manually, automatically, or both automatically and manually.

How to show, hide ARPA symbols



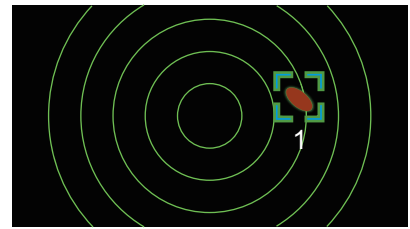
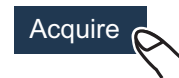
Open the [Layers] menu.



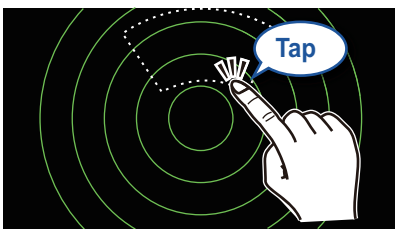
How to manually acquire a target



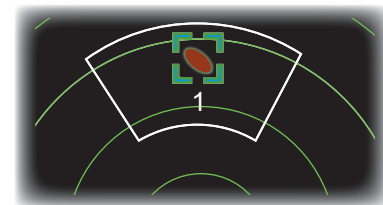
Tap the target to acquire.



Automatic target acquisition



Set a guard zone, then tap the guard zone.



The dashed lines change to solid lines, indicating the guard zone is active.

ARPA symbols



At acquisition



Within 30 seconds after acquisition



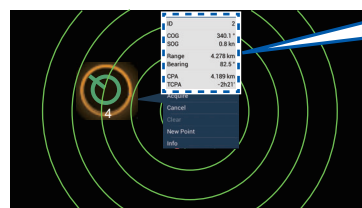
Lost target

How to display target data



ARPA symbol

Tap an ARPA target to show its data.



| | |
|-----------|----------|
| ID | 2 |
| COG | 340.1 ° |
| SOG | 0.8 km |
| Range | 4.278 km |
| Bearing | 82.5 ° |
| CPA | 4.189 km |
| TCPA | -2h21' |
| Acquire | |
| Cancel | |
| Clear | |
| New Point | |
| Info | |

CPA/TCPA alarm

The CPA/TCPA alarm releases an aural alarm and a visual alarm (message in Status bar) when both the CPA and TCPA of a tracked target are equal to or lower than the CPA/TCPA alarm setting.

CPA: Closest point of approach

TCPA: Time to closest point of approach

How to set the CPA/TCPA alarm



How to acknowledge the CPA/TCPA alarm

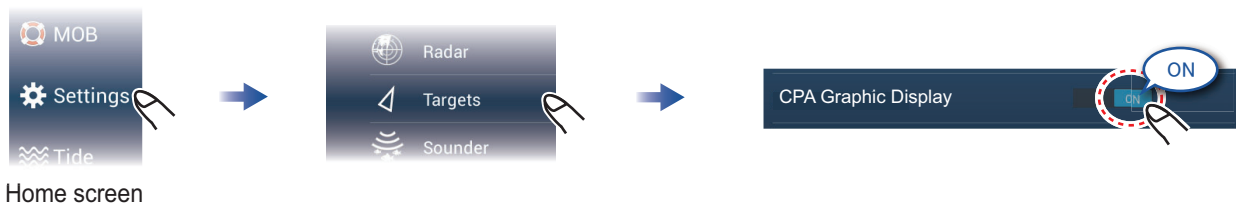
Tap the alarm message (top of screen) to acknowledge the alarm and stop the aural alarm.



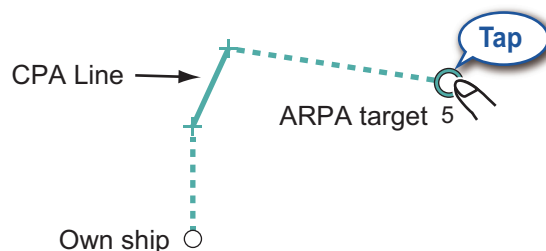
CPA Line

The CPA Line feature gives you a visual line that depicts the closest point of approach to a selected ARPA target. To use this feature, own ship position and heading data is required.

How to enable the CPA Line feature

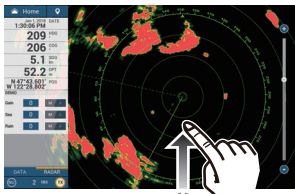


How to show the CPA Line



AIS (Automatic Identification System)

How to show or hide AIS target symbols



Open the [Layers] menu.



AIS Targets



AIS symbols ON

AIS Targets



AIS symbols OFF

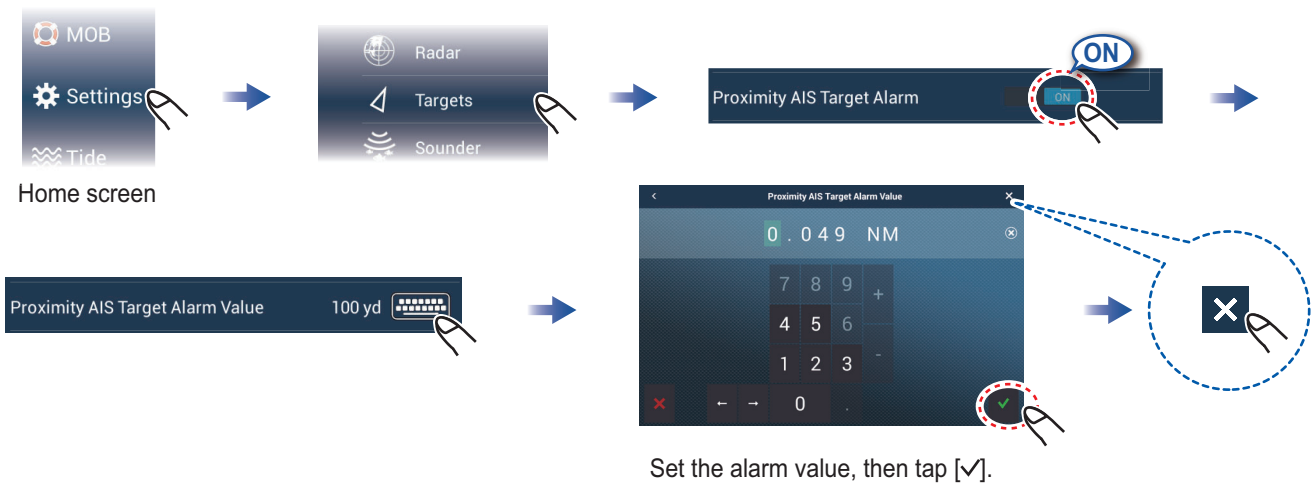
AIS target symbols

| | Class A AIS | Class B AIS | BFT* AIS |
|------------------|---------------------------------------------|----------------------------------------------|------------------------------------------------------|
| Activated target | SOG and COG vector Color: Blue | SOG and COG vector Color: Green | SOG and COG vector Color: Blue (filled) |
| Dangerous target | Color: Red ← Flashing | | |
| Lost target | Color - AIS target: Blue - Cross: Red | Color - AIS target: Green - Cross: Red | Color - AIS target: Blue (filled) - Cross: Red |

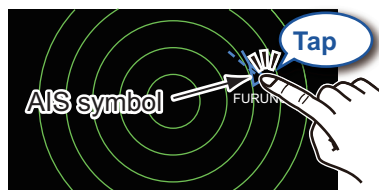
*: Blue Force Tracking

Proximity AIS target alarm

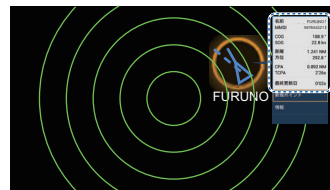
The proximity AIS target alarm releases aural and visual alarms when the distance between own ship and an AIS target is near the alarm value.



How to show AIS target data

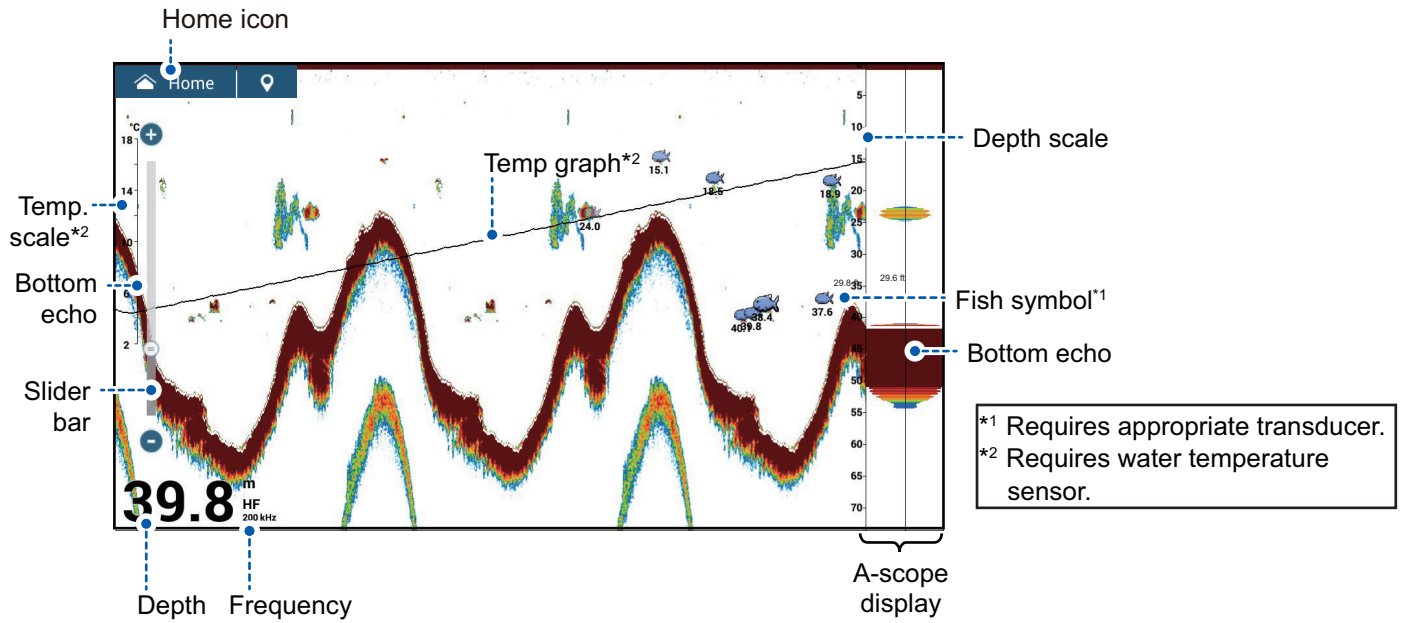


Tap an AIS target to show its data.



| | |
|-------------|-----------|
| Name | FURUNO |
| MMSI | 987654321 |
| COG | 173.0 ° |
| SOG | 0.1 kn |
| Range | 20.61 NM |
| Bearing | 354.6 ° |
| CPA | 20.55 NM |
| TCPA | -16'05s |
| Last Update | 0'39s |
| New Point | |

Fish Finder



Note: Names of menu items may be changed depending on the transducer connected.

How to select a frequency

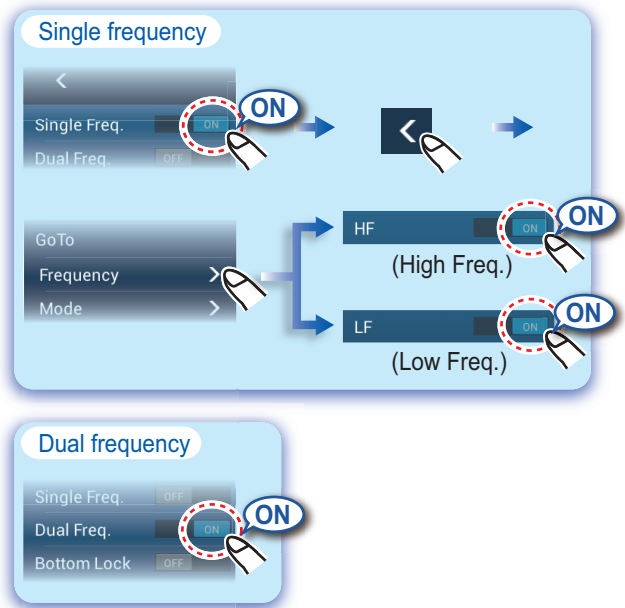
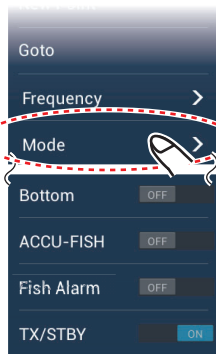
Low frequency: For “normal” use.

High frequency: For detailed observation of schools of fish.

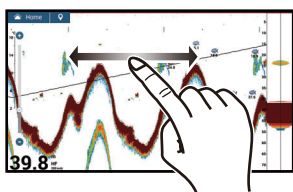
Dual frequency: Show both the low and high frequency pictures.



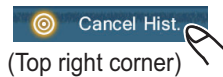
Notice
[TX/STBY] on the layer menu toggles between TX and standby.



How to show past echoes (echo history)



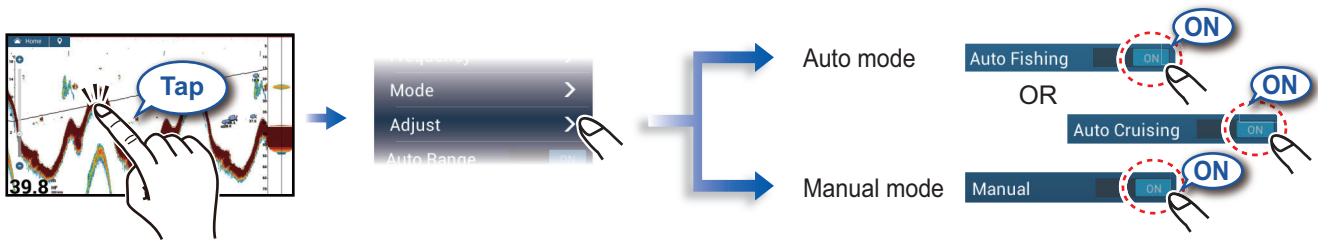
Swipe leftward or rightward to show past echoes.



Return to normal display.

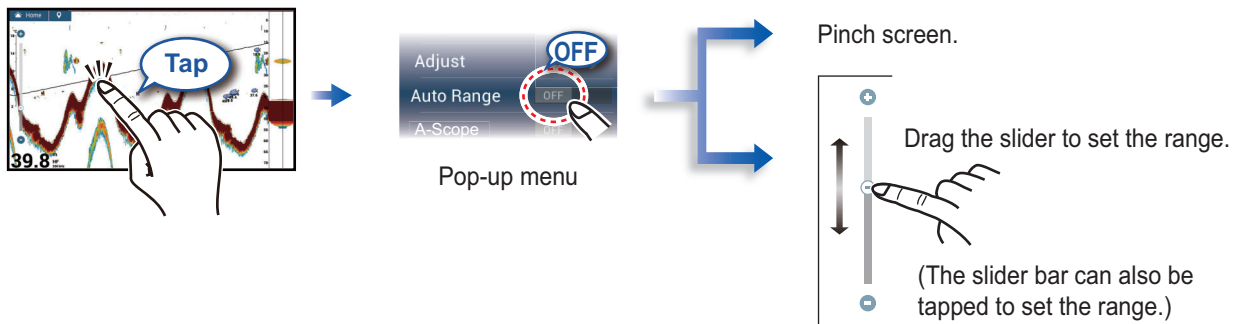
How to select the operating mode

The fish finder is available in automatic and manual operation. For automatic operation, gain, clutter and TVG are automatically adjusted.

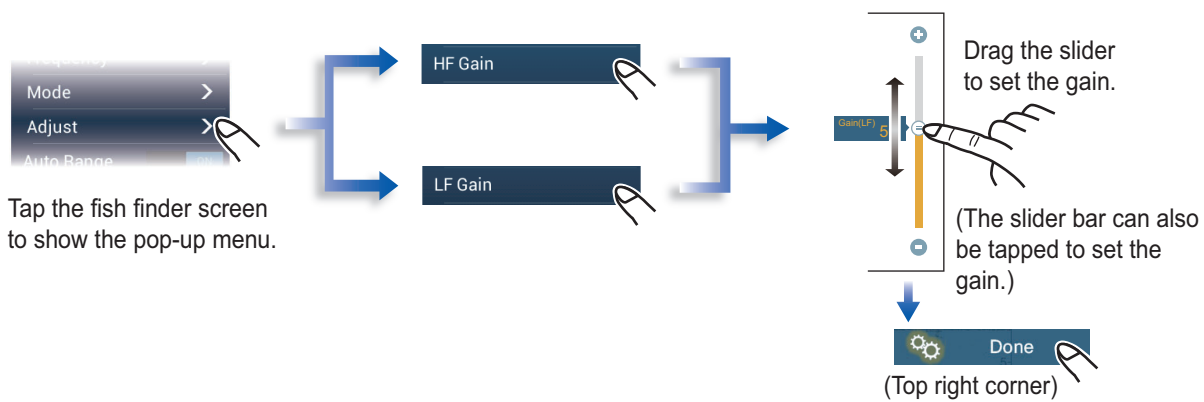


Manual mode

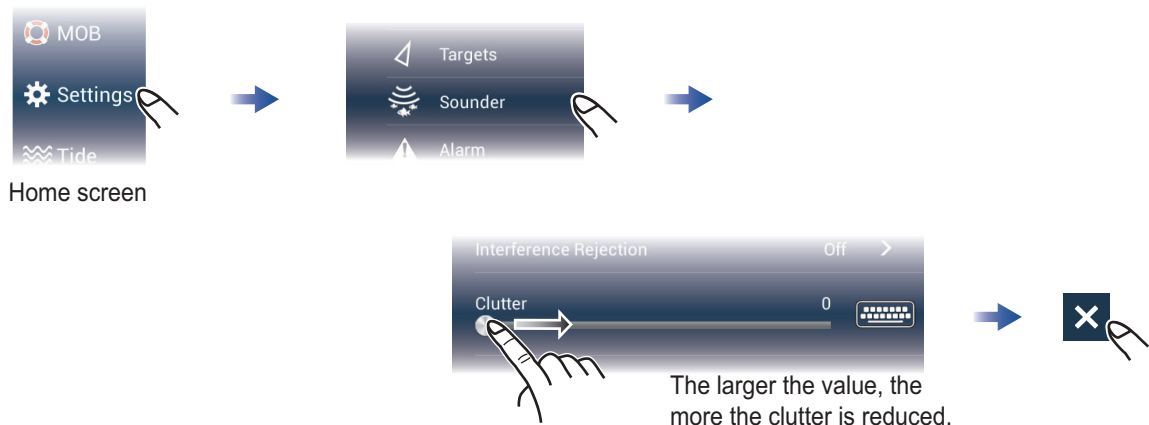
How to change the range



How to adjust the gain



How to reduce the clutter



Zoom display

Tap

Frequency >
Mode >
Adjust >

Bottom Lock **ON**
Search for bottom fish.

Bottom Zoom **ON**
Find bottom contour and hardness.

Short tail: Soft bottom
Long tail: Hard bottom

ACCU-FISH™/Bottom Discrimination/RezBoost™

Show the layer menu.

Fish Finder Source: TZT12F DEMO

A-Scope: ON

Temperature: ON

Bottom: ON

ACCU-FISH: OFF

White Edge: Off 1 2 3 4 5 6 7 8 9 10

Picture Advance: 4/1 2/1 1/1 1/2 1/4 1/8 1/16 Stop

Interference Rejection: Off Low Medium High Auto

RezBoost: Standard Enhanced

Clutter

Color Erase

Fish Alarm: OFF

TX/STBY

Fish Finder Settings

Bottom Discrimination
Show probable bottom hardness (requires bottom discrimination capable transducer).

Bottom **ON**

Bottom discrimination display

576

Rock
Gravel
Sand
Mud

The most probable bottom material.

RezBoost™
Raise the echo resolution (requires RezBoost™ capable transducer).

RezBoost Enhanced

Standard Enhanced

(Standard mode) (High resolution mode)

ACCU-FISH™
Detected fish can be marked with a fish symbol (requires ACCU-FISH™ capable transducer).

ACCU-FISH **ON**

Fish symbol

Fish size or depth **12**

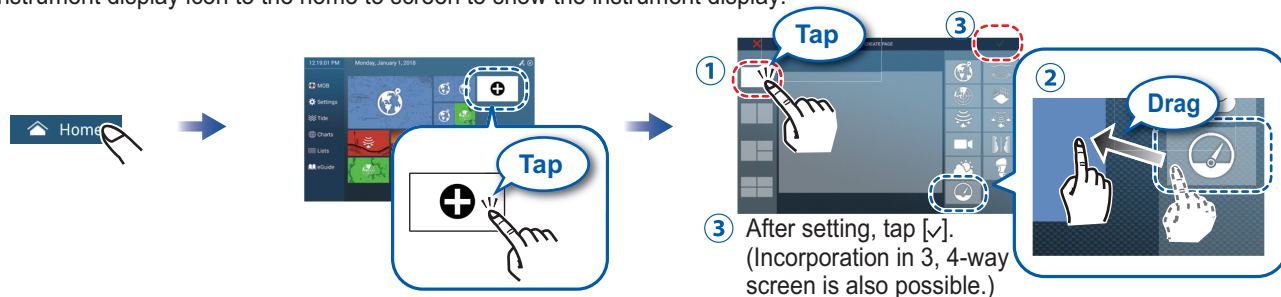
Notice
You can select fish symbol type, and fish size or depth indication from the menu - go to home screen, [Settings], [Sounder].

Instrument Display

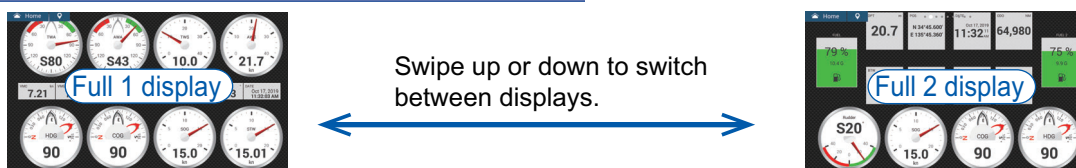
With connection of appropriate sensors, the instrument display shows various navigation data.

How to enable the instrument display

Add an instrument display icon to the home to screen to show the instrument display.



How to switch instrument displays (ex. full display)

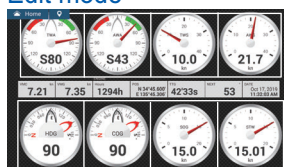


How to edit an instrument display



Tap the instrument display, then tap [Edit Page] on the pop-up menu.

Edit mode



A white line surrounds each indication.

In the edit mode, you can remove, change, add, rearrange indications.

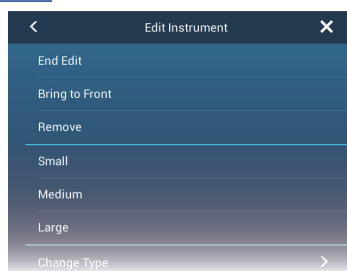
To end the edit mode

Tap the screen, then tap [End Edit] on the pop-up menu.

How to remove or change an indication



In the edit mode, tap the indication to remove or change.

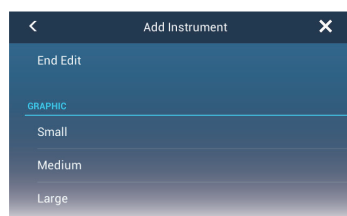


- Remove indication: Tap [Remove].
 - Change size: Tap [Small]*, [Medium], or [Large].
 - Change type: Tap [Change Type].
 - Change indication: Tap indication in [NAVIGATION DATA], [ROUTE INFORMATION], [WIND AND WEATHER].
- Note:** Drag the menu to show hidden items.
* Graphic, digital only

How to add an indication



In the edit mode, tap a location not occupied by an instrument display.



Tap a size in desired category.



Added item appears at tapped location.

Wireless LAN Settings

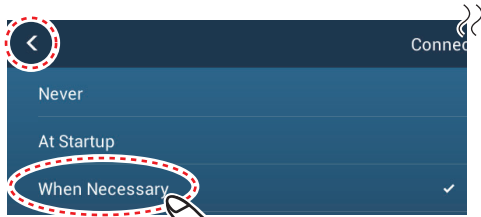
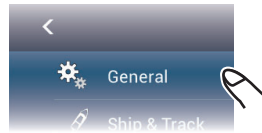
You can connect to the internet with the wireless LAN signal to download weather information and to connect to an iPhone, iPod, iPad, or Android™ device.

How to connect to an existing LAN

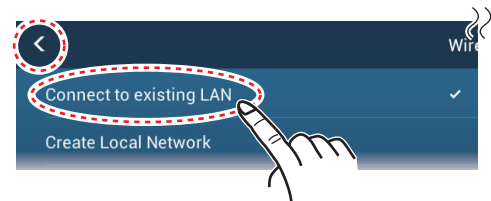
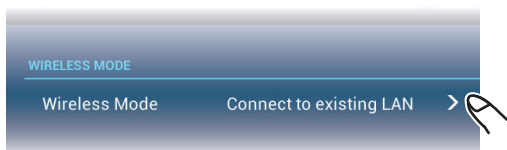
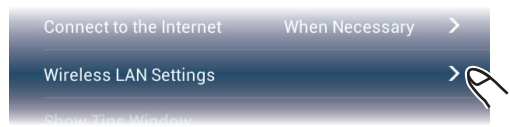
Connect to the existing LAN to download weather data or update the software. For smartphone and tablet settings, refer to appropriate manuals.



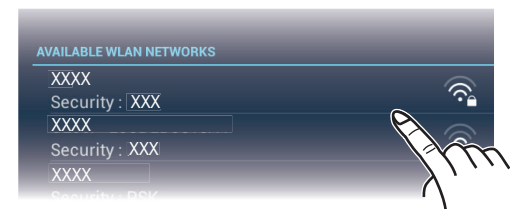
Home screen



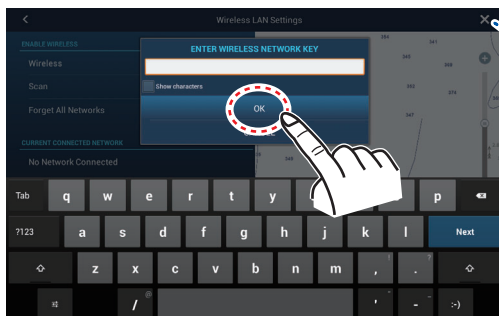
Select [When Necessary], then tap "<".



Select [Connect to existing LAN], then tap "<".



Tap network required.



Enter the name of the network, then tap [OK].



How to create a local wireless network

Create a local wireless network to connect to an iPhone, iPod, iPad, or Android device.

