

The Sensor-Max II is Jabsco's most sophisticated freshwater delivery pump featuring variable speed technology.

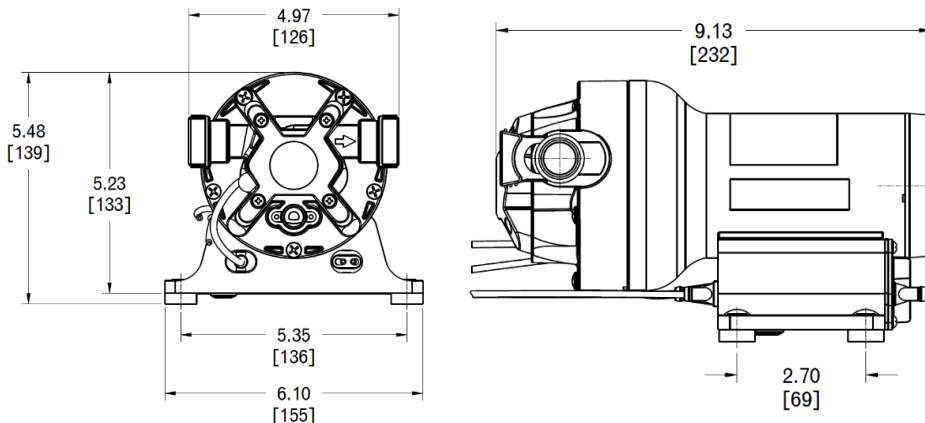
The Sensor-Max II incorporates Jabsco's high performance five chamber design with high precision pressure sensor and variable speed programming that automatically adjusts the motor speed to deliver steady, on-demand flow to your faucets and showers without the pulsations or water hammer. The result is an extremely quiet pump operating smoothly in the background for a truly exceptional onboard experience.

Features:

- Consistent pressure and smooth, steady flow
- High flow capacity, supplies up to five outlets
- Quiet operation with no water hammer
- Eliminates need for accumulator tank
- Conserves power by adjusting motor speed as needed

Contents:

Pump Unit:	Sensor-Max II 12V 5GPM 40PSI Sensor-Max II 19LPM 2.8BAR
Port Fittings:	2 x 1/2" (13mm) Straight Hosebarb 2 x 3/4" (19mm) Straight Hosebarb 1 x 1/2" (13mm) Elbow Hosebarb 1 x 3/4" (19mm) Elbow Hosebarb
Strainer:	90 Degree Quick Connect; 40 mesh
Installation, Operation and Maintenance Manuals:	Included (PN 43000-0896)
Carton type:	4 Color Aftermarket
Master pack qty:	4



Dimensional Drawing

Notes: Inches [mm]
Additional envelope space required to allow port clips to extend, wires to bend, port fittings and hoses, etc.

Specifications:

General

Part Number:	V50AJ-115N-3A
Aftermarket replacement:	V50AJ-115N-3A
Replaces (closest matches):	42755-0092
Application:	Diaphragm Pressure Systems
Design:	5 Chamber Diaphragm Quick Connect Ports TENV Permanent Magnet Motor Noise Dampening Baseplate Thermal Motor Protection (TCO)

Materials (*designates wetted path)

Upper Housing*:	Glass-filled Polypropylene
Lower Housing:	Cast Aluminum
Check Valve Retainer*:	Polypropylene
Diaphragm*:	Santoprene
Check Valves*:	EPDM
Switch diaphragm*:	EPDM
Bypass Diaphragm*:	EPDM
PH Seals*:	EPDM
PH Fasteners:	Stainless Steel
Baseplate:	Plastic with Rubber Feet
Motor Casing:	Cast Aluminum; Coated Steel

Hydraulic Performance (at 12.0 VDC)

Open Flowrate:	5 GPM open flow (19 LPM)
Pressure Switch Cut-Off:	Not applicable
Max Operating Pressure:	40 PSI (2.8 BAR)
Max Inlet Pressure:	30 PSI (2.1 BAR)
Internal Bypass:	Yes
Fluid Temperature Range:	32°F - 140°F (0°C - 60°C)
Self-Priming Capability:	Up to 8 ft (2.4 m) dry prime
Run-Dry Capable:	Yes

Electrical Performance (at 12.0 VDC)

Nominal Voltage:	12 VDC
Voltage Range:	9 VDC - 15.5 VDC
Max Current Draw:	12 Amps @ 40 PSI (2.8 BAR)
Required Fuse Size:	15 Amps (not included)
Duty Cycle:	Intermittent (See heat-rise chart)
Leads:	12" (305mm), 14 AWG (2.5mm ²)
Wire Connection:	Stripped Wire

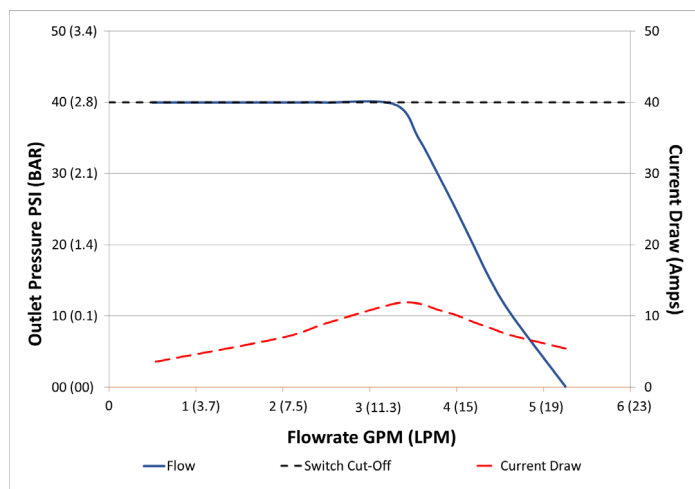
Compliance

CE:	No
ISO 8846 Ignition Protected:	Yes
Country of Origin:	China
HTS Code:	8413.50.0050

Other Information

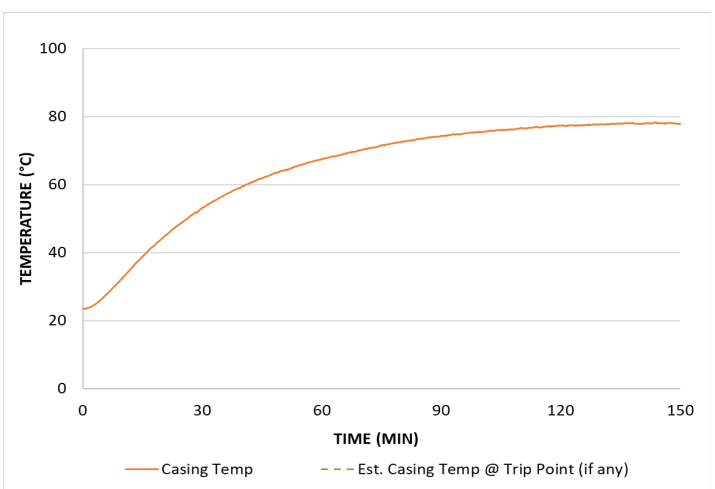
Operating Environment:	Marine
Ambient Temp Range:	32°F - 140°F (0°C - 60°C)
IP Rating:	IPX5
Carton Dimensions:	17x6x7" (435x152x178mm)
Weight:	8.5 lbs (3.9 kg)
UPC Code:	671880594899

Flowcurve



Representative curve of unit operated at nominal voltage. Performance will vary somewhat unit to unit. Variable speed programming allows pressure to be held steady at max pressure until no demand is required.

Heat-Rise

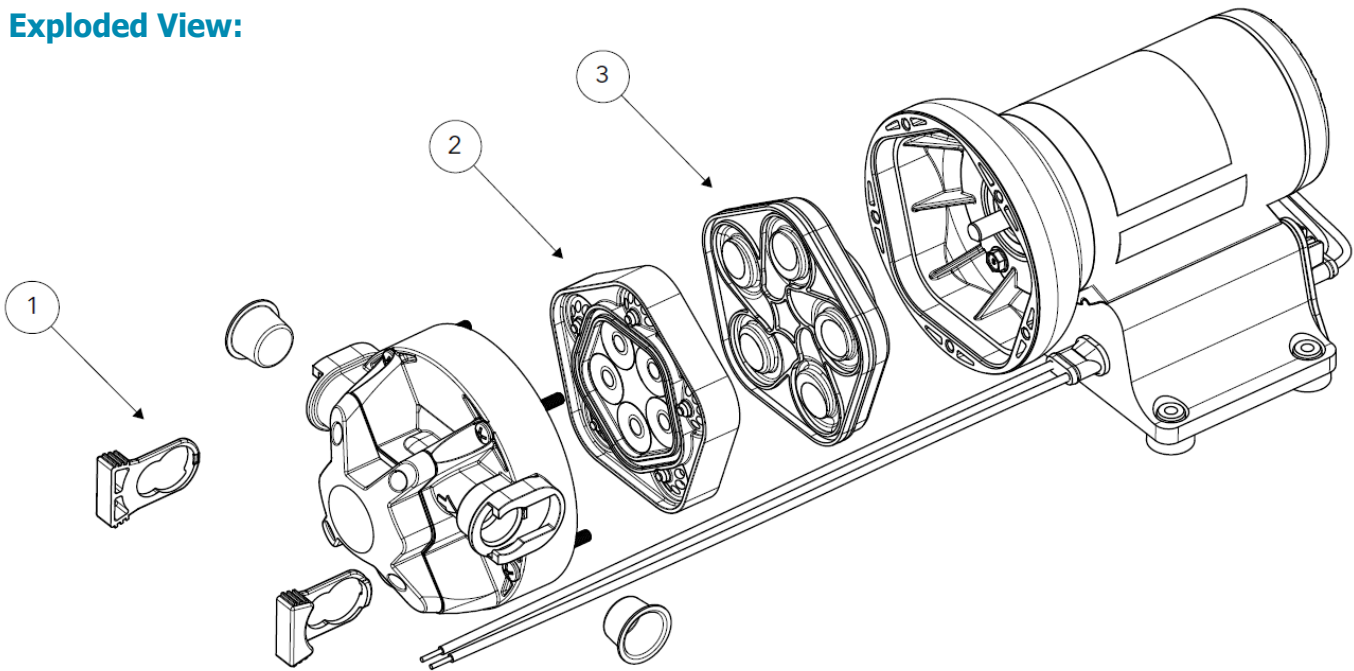


Tested @ ambient temp of 72°F (22°C) @ 40 PSI
If there is a concern about the ability of the pump to run continuously for long periods of time, then in-application testing is highly recommended.

Pump Service Kits & Spares:

ITEM	PART NUMBER	KIT CONTENTS
1. Port Clips	30647-1000	2 port clips
2. Check Valve Assembly	18753-8001	Check valve sub-assembly and O-ring
3. Diaphragm/Drive Assembly	18753-8000	Wobble plate/diaphragm sub-assembly

Exploded View:



Accessories (see website for further info):

Item	Kit PN	Description	Notes
Strainers (Required in all applications)	46400-9500	Inlet, 90 degree, QC	QC = Quick Connect Place before inlet of the pump so as to filter the incoming water and protect the check valves and pressure switch from getting clogged. Other options available as well. See website for more detail.
	46400-0010	Inlet, 90 degree, 3/4" Hosebarb	
	46400-0012	Inlet, 90 degree, 1/2" Hosebarb	
	46400-0014	Inlet, 90 degree, 1/2"-14 NPSM	
	46400-0030	Inlet, Bayonet Style, QC	
	46400-0000	In line, 3/4" Hosebarb	
	46400-0002	In-line, 1/2" Hosebarb	
	46400-0003	In-line, 3/8" Hosebarb	
Port Fittings	1877K-2222S	2-5 GPM Models: 1/2" Hosebarb	Part numbers listed are straight port configuration Quantity 2 per except GHT GHT = Garden Hose Thread (qty 1) Threaded = NPSM Threads For 90 degree Elbow models replace the S with an E Not all models have 90 degree equivalents
	1877K-2242S	2-5 GPM Models: 1/2" Threaded	
	1877K-3222S	2-5 GPM Models: 3/4" Hosebarb	
	1877K-3211S	2-5 GPM Models: 3/4" GHT	

Marine Application Notes:

Freshwater Delivery Pumps -

Installed to provide on-demand flow and pressure of freshwater to galleys, showers, washing machines, etc. Typical rule of thumb for sizing is 1 GPM per outlet. 40-60 psi (2.8 - 4.1 Bar) options provide similar pressure to that in a home on land. These pumps are equipped with a bypass which enables smoother flow and decreases cycling. Common accessories include strainers, water pressure inlet regulators, and accumulator tanks.

Installation, Operation, and Maintenance

For guidance on proper installation, operation, and maintenance of this pump, as well as for any warnings or cautions involving use, please consult the appropriate IOM (Installation, Operation, and Maintenance Manual) for the pump. Printed IOM's are supplied with the pumps and are also available online.

Resources & Contact Information

IOM:	On website; hard copies with pumps	Customer Service:	Refer to contact info at our website
Warranty:	3 year warranty (see IOM for details)	Website:	www.xylem.com/Jabsco

Note: Specifications provided for guidance only. We reserve the right to change specifications without prior notice.



Xylem Inc. — USA
17942 Cowan
Irvine, CA 92614

Xylem Inc. — UK
Harlow Innovation Park,
London Road,
Harlow, Essex, CM17 9LX

Xylem Inc. — CHINA
30/F Tower A, 100 Zunyi Road,
Shanghai 200051

Xylem Inc. — HUNGARY KFT
2700 Cegléd
Külso-Kátaí út 41

Xylem Inc. — AUSTRALIA
14 Emporium Avenue,
Kemps Creek NSW 2178

www.xylem.com/jabsco

© 2024 Xylem Inc. All rights reserved
Jabsco is a trademark of Xylem Inc. or one of its
subsidiaries

V50AJ-115N-3A Rev. A 07/2024