



a xylem brand

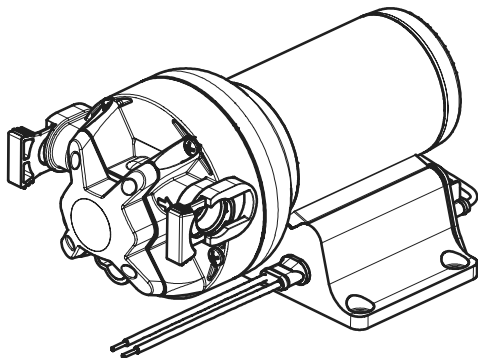
---

## SENSOR-MAX II V50AJ-115N-3A

### INSTALLATION AND OPERATION MANUAL

---

- FR** Pompe automatique pour réseau d'eau  
MANUEL D'INSTALLATION ET D 'UTILISATION
- DE** Automatikpumpe für Wasseranlagen  
INSTALLATIONS- UND BETRIEBSANLEITU
- IT** Pompa automatica dell'impianto idrico  
MANUALE DI INSTALLAZIONE E FUNZIONAMENTO
- NL** Automatische watersysteempomp  
INSTALLATIE- EN BEDIENINGSHANDLEIDING
- SE** Automatisk vattensystempump  
INSTALLATIONS- OCH BRUKSANVISNING
- ES** Bomba para sistema automático de agua  
MANUAL DE INSTALACIÓN Y FUNCIONAMIENTO



# SENSOR-MAX II – Automatic Water System Pump



**CAUTION:** Read this manual carefully before installing, using or servicing this product. Failure to follow the instructions within this manual could result in explosion, property damage, severe personal injury and/or death.



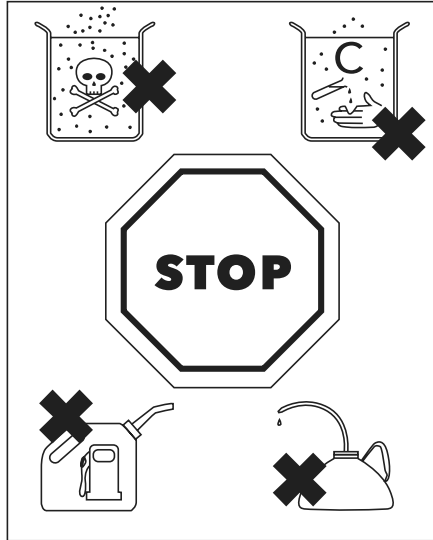
**NOTICE:** Save this manual for future reference, and keep it readily available at the location of the unit.

## Safety



### WARNING:

- The operator must be aware of safety precautions to prevent physical injury.
- Operating, installing or maintaining the unit in any way that is not covered in this manual could cause death, serious personal injury or damage to the equipment. This includes any modification to the equipment or use of parts not provided by Xylem. If there is a question regarding the intended use of equipment, please contact a Xylem representative before proceeding.



## User safety

### General safety rules

These are safety rules apply:

- Always keep work area clean
- Pay attention to the risks presented by gas and vapors in the work area.
- Avoid all electrical dangers. Pay attention to the risks of electric shock or arc flash hazards
- Always bear in mind the risk of drowning, electrical accidents and burn injuries



**WARNING:** This pump is designed for use with fresh water and salt water ONLY. Use with any other hazardous, caustic, or corrosive material could result in damage to the pump and the surrounding environment, possible exposure to hazardous substances and injury.



**WARNING:** Do not use a pump if it presents some damage such as burned or broken pressure switch, broken port clips, exposed electric wire and/or contacts.



### WARNING: Explosion hazard.

Do not use motor pump units for pumping gasoline, solvents, thinners or other flammable liquids with flash point below 100°F (37.8°C). Doing so may result in explosion, which could cause personal injury, death or property damage.

## Installation/Mounting



### CAUTION:

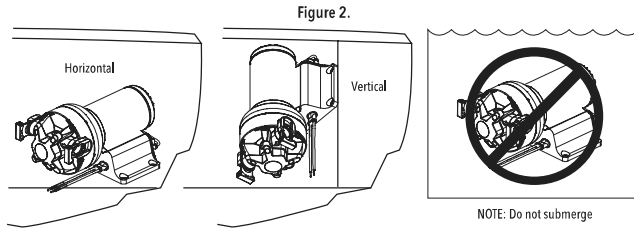
Not for continuous duty, intermittent duty only.



### CAUTION: Installation Notes:

To avoid the risk of fire. Be sure that the area where pump is installed is isolated from gas, fuel tanks, electrical wiring looms or flammable substances. Failure to do so may cause personal injury, death or property damage.

1: Select pump location. Pump must be installed in a dry, ventilated area.



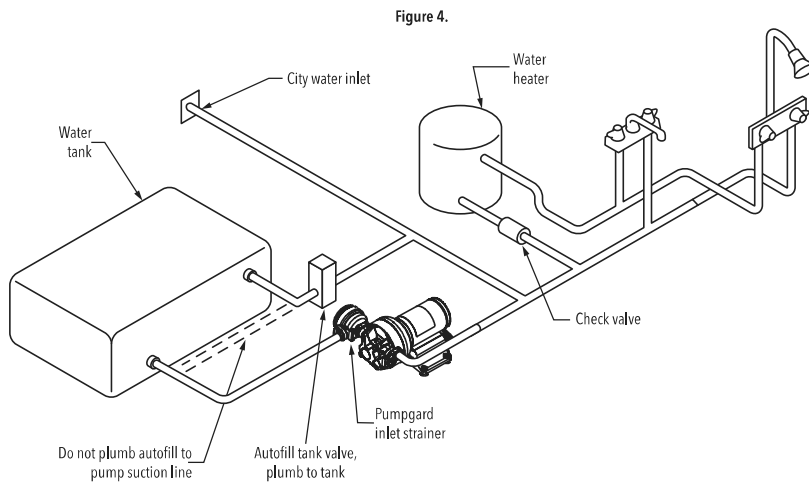
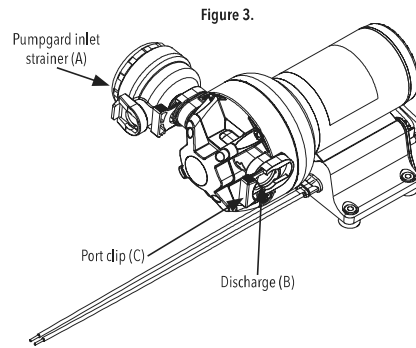
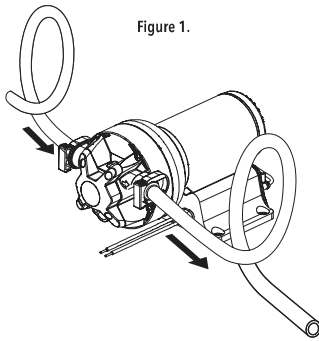
2: Connect fittings supplied with the pump to the vessels plumbing. Use 1/2" (13mm) or 3/4" (19mm) I.D. flexible hose (preferably braided or reinforced) to reduce vibration through the plumbing system (Figure 1). Use hose clamps on the slip on barb hose connectors.

Important: Install pumpgard inlet strainer to protect valves from debris.

3: Fasten pump to a flat surface. If mounting vertically; install with pumphead down (Figure 2). Do not over tighten screws to allow rubber mounts to absorb vibration.

4: Install inlet (A) and discharge (B) fittings. Firmly push port clips (C) towards motor to lock fittings in place. (Figure 3)

5: **DO NOT INSTALL AN ACCUMULATOR TANK WITH THE SENSOR-MAX II PUMP.** If an accumulator tank is installed in your fresh water system, please remove all air pressure by depressing air valve on top of the accumulator tank.





**WARNING**



**FIRE HAZARD**

**Wiring must comply with applicable electrical standards and include a properly sized fuse. Improper wiring can cause a fire resulting in personal injury, death or property damage.**



**CAUTION:** Suggested wiring information is given as a reference. For proper information, please reference ABYC E-11, AC and DC Electrical Systems on Boats guidelines.

### Wire Size Table

Total Wire Length - feet (meters)

Pump Voltage	0 - 25 ft (0 - 7.6 m)	25 - 40 ft (7.6 - 12.2 m)	40 - 60 ft (12.2 - 18.2 m)
12 VDC	#14 AWG (2.5 mm <sup>2</sup> )	#12 AWG (4 mm <sup>2</sup> )	#10 AWG (6 mm <sup>2</sup> )

Pump comes with 14" of AWG 12 gauge wire.  
Please use water tight connections when connecting wires.



**CAUTION:** Motor case could get hot during extended operation. Prolonged contact with skin may cause a burn.

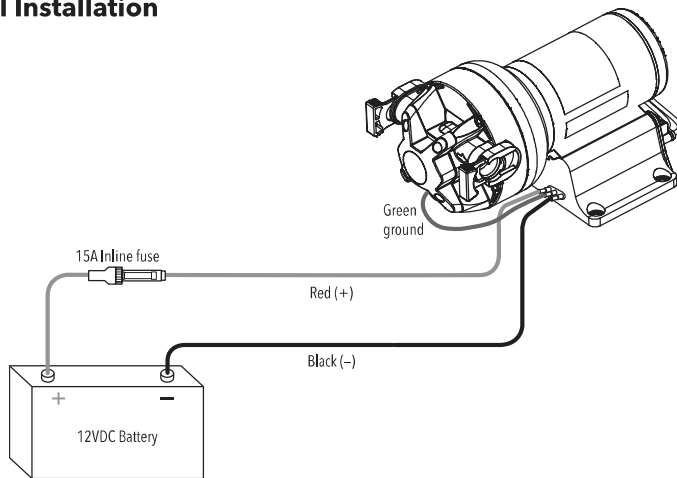


**WARNING:** Electrical connections should be performed by a competent marine electrical technician.

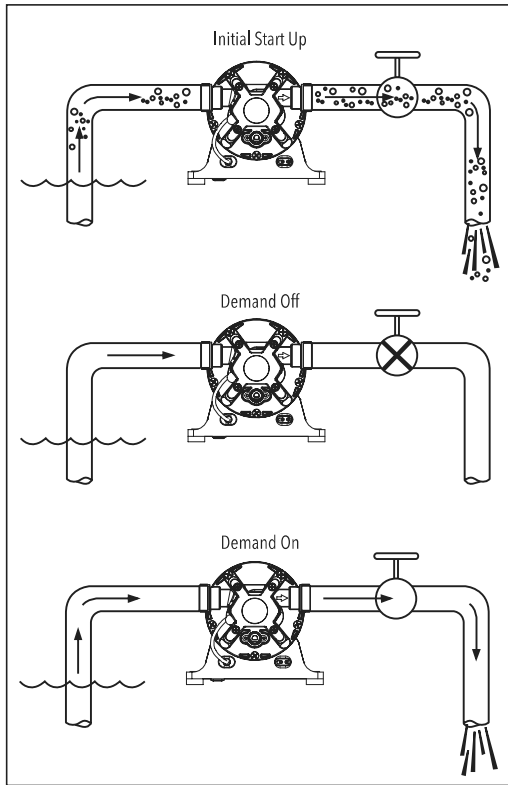


**CAUTION:** Disconnect power from the system before working on the unit to avoid personal injury, damage to the surrounding environment and/or damage to the unit.

### Electrical Installation Diagram



## Operation



- Fill water tank
- Open all faucets
- Turn pump switch "ON"

**NOTE:** Expect a 10 second delay for power up.

- When plumbing is free of air, turn all faucets off beginning with the faucet closest to the pump
- If pump is not operating, please cycle power off and on to the pump. This will reset the circuit board inside the controller assembly.

**Important:** Do not operate the pump more than 15 minutes continuously.

## Winterizing



**CAUTION:** Allowing water to freeze in the system may result in damage to the pump and plumbing system. Non-Toxic antifreeze for potable water may be used with Jabsco pumps. Refer to boat or equipment manufacturer's instructions for their specific winterizing and drainage procedures. Do not use automotive antifreeze to winterize potable water systems. These solutions are highly toxic and may cause serious injury or death if ingested.

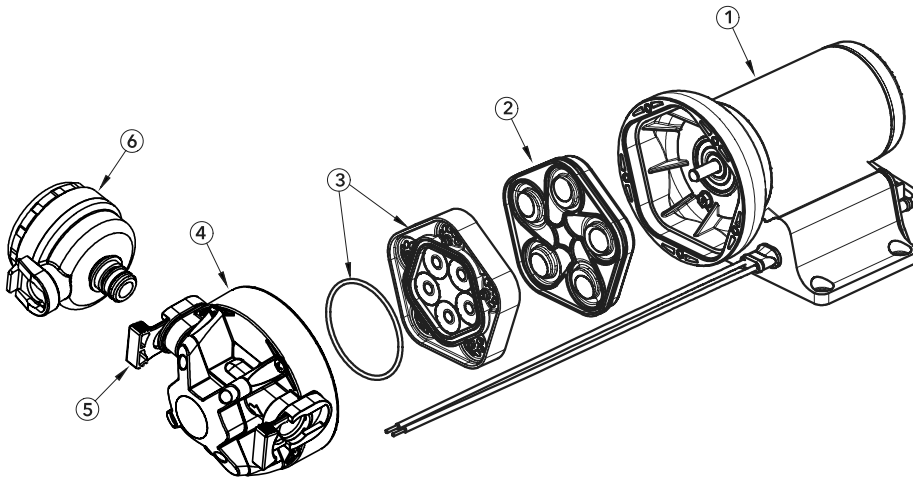
1. Empty the water tank by opening the drain or using the pump with all faucets open in the system. Allow the pump to operate until the tank is empty. Do not operate the pump more than 15 minutes continuously.
2. Open all faucets and purge the water from the plumbing system. Turn off power to the pump. Be sure that all the water from the drain lines is drained.
3. Remove quick-connect inlet and outlet fittings from the pump and turn the pump on to pump out remaining water from the pump head. Be sure to have a catch pan or a rag under the pump to collect any residual water. Turn the pump off once the plumbing is empty. Leave the fittings disconnected from the pump until the system is ready to be used again. Make a note on your tank filler that the plumbing is not connected.
4. Be sure that all faucets are left open to protect against damage to the plumbing.

## Model Reference

Model	Voltage	Max Amp Draw (Fuse)	Flow GPM (lpm)	Max Pressure (BAR)
V50AJ-115N-3A	12V dc	12A (15A)	5.0 (19)	40 (2.8)

## Exploded View

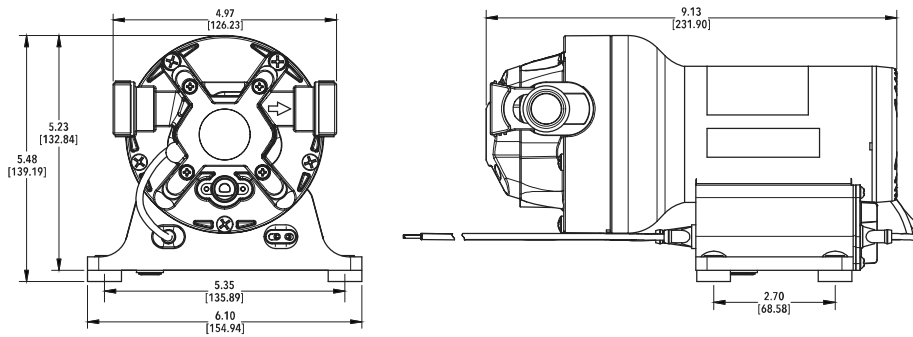
VUE ÉCLATÉE / EXPLODIERTE ANSICHT / VISTA ESPLOSA / UITGEBREIDE UITZICHT / SPRÄNGVY / VISTA EXPLOTADA



ITEM	PART NO.	DESCRIPTION	QTY
1	-	Motor and Controller Assembly	1
2	18753-8000	Diaphragm/Dirve Assembly Kit	1
3	18753-8001	Check Valve Assembly with O-ring Kit	1
4	-	Upper Housing	1
5	30647-1000	Port Clips Kit (2 per)	1
6	46400-9500	Pumpgard Inlet Strainer Kit	1

## Dimensional Drawing Inches [millimeters]

DESSIN DIMENSIONNEL pouces [millimètres] / MASSZEICHNUNG Zoll [Millimeter] / DISEGNO DIMENSIONALE Pollici [millimetri] / MAATTEKENING Inch [millimeter] / DIMENSIONELL RITNING tum [millimeter] / DIBUJO DIMENSIONAL Pulgadas [milímetros]



### NOTICE: END OF LIFE DISPOSAL

Handle and dispose of all waste in compliance with local laws and regulations.