

LEWMAR®

Removing & Refitting Ocean Hatch Lids

TO REMOVE LID

1. Open the lid and detach the Friction Lever from the lid.

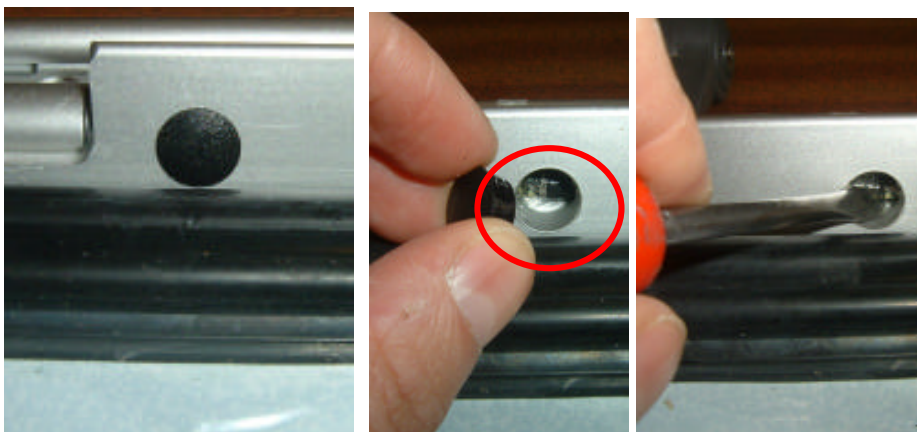


Larger Ocean Hatches

Locate the black plastic caps on the underside of the aluminium lid on the back edge. These will not be present on the smaller hatches with only one hinge.

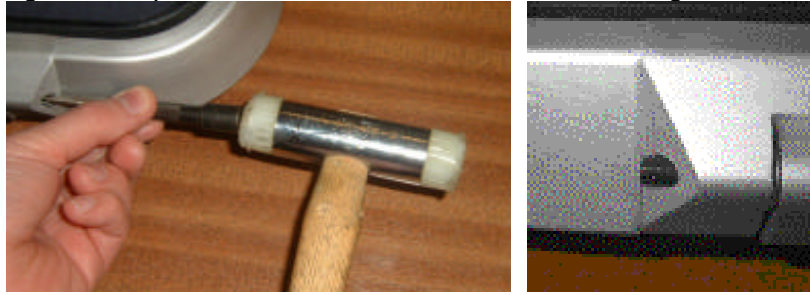
Remove the cap on inside of lid. The end of the black hinge pin should be visible in the hole.

Insert a flat head screwdriver into the half of the hole not filled by the hinge pin. Force the hinge pin outboard by either tapping the screwdriver or levering it against the side of the slot.



Smaller Ocean Hatches

If the hatch does not have black caps use a punch to tap the hinge pin until a small length of the pin is visible on the other side of the hinge



2. Close the lid without dogging the handle this minimises the load on the hinge pin. A small length of the black hinge pin should now be visible sticking out of the back of the lid where the hinge tapers away to the upper frame.
3. If there are two pins make sure that both the hinge pins are sticking out of the hinge before starting the next stage.
4. Moving the lid with one of the pins removed may result in the remaining pin being bent while in place. This makes it extremely difficult to remove.



5. Clamp a pair of mole grips on to the part of the hinge pin which is sticking out. Withdraw the hinge pin



6. Collect grab washers



TO REFIT LID

Refitting is the reversal of removing the lid

1. Making sure that Grab Washers are in place, use a soft headed hammer to drive hinge pins home



2. Use punch to push pin 2mm into hole



3. Refit Friction Lever

===000==