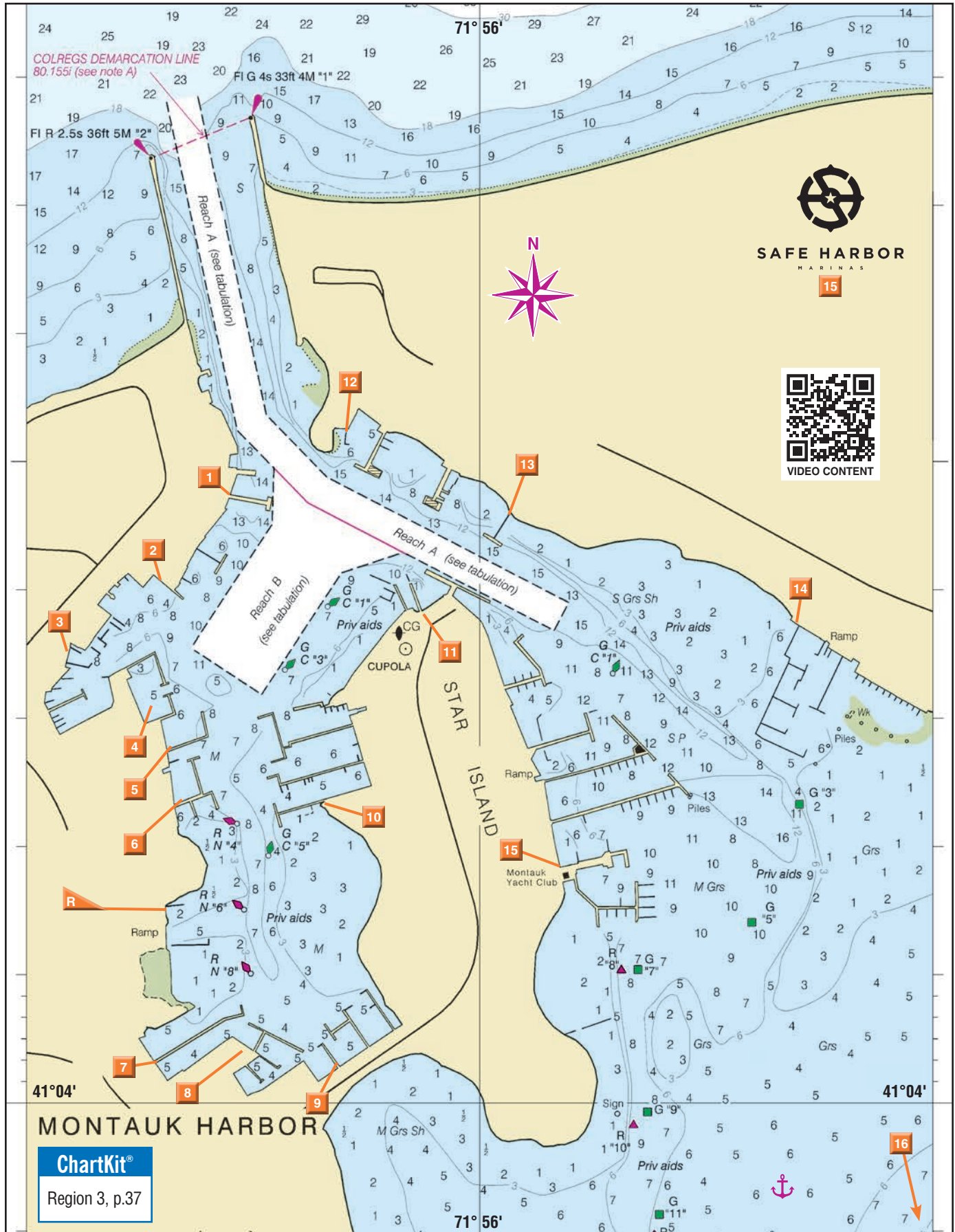


# Montauk and Napeague Harbors

★ **Superyacht Destination**



© MAPTECH / NOAA CHART 13209 / SCALE 1:7,500 / CORRECTED THROUGH NOTICE TO MARINERS 11/15/19. NOT FOR NAVIGATION.

# Montauk and Napeague Harbors

Superyacht Destination 

Located 110 miles from New York City and, indeed, the eastern terminus of Long Island, Montauk retains a resilient feeling of being off the beaten path despite its current popularity as a day-trip destination from early spring through October. While the tag line years ago was “Montauk: A small waterfront community with a big fishing problem,” it is today as popular a boating and tourist destination as any in the region.

It wasn't all that long ago that this town, known locally as “The End,” was focused mostly on fishing. Piscatorial pursuit is still a big-time draw here, but recent years have seen tourism grab the spotlight. The tremendously skilled fishing fleet is as good as ever, no doubt, but it's hard to think of this place as “sleepy” anymore, save perhaps for the dead of winter.

Simply put, Montauk bustles with activity these days, both along its waterfront and up in the village. In fact, it's so busy that at peak season it may be quicker to take a boat here from southern New England than to drive out by car from Manhattan. Still, most visitors find the drive, whether by land or sea, to be well worth the effort. You'll find big water, big boats and even bigger fun






© SHORELINE AERIAL PHOTOGRAPHY

Grab a cocktail and mingle with peers while seeing the sun set at Montauk Anglers Club.

here — and with over 5,000 acres of pristine public beaches and breathtakingly diverse parklands, there is tremendous opportunity for outdoor adventures.

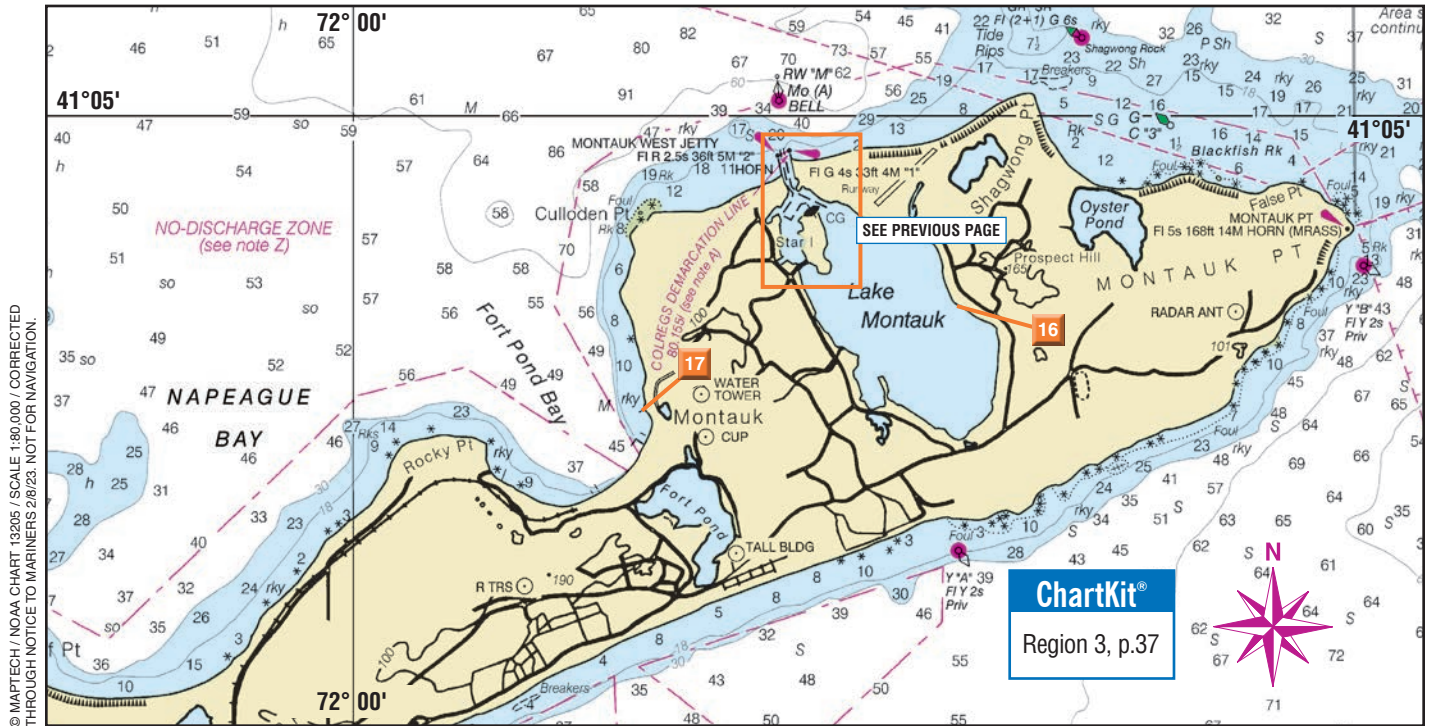
This destination deservedly ranks high on the current must-experience list, but its story really began about 1.8

		DOCKAGE		SERVICES		SUPPLIES		AMENITIES											
 Join: 800-395-2628 or visit BoatUS.com Get a tow: 800-391-4869		 <b>Marine Facilities and Services</b> ★ Superyacht Facility		Approach / Dockside Depth in Feet at MLW 110V / 220V 3 Phase Hookups: Water / Cable TV Maximum LOA		Diesel / Wood / Fiberglass / Electronics Repairs: Prop / Sail / Rigging / Gas Ramp / Dinghy Dock / Launch Service Rail / Lift / Crane / Trailer: Capacity (tons)		Restrooms / Showers / Laundry / Pumpout Marine / Groceries / Ice / Bait Fuel Brand V = ValvTect® Gas / Diesel		954-463-2707 www.spursmarine.com  Line Cutter MasterCard / VISA / Discover / AmEx Internet / Restaurant / Snack Bar Hotel / Pool / Tennis / Golf									
		Offers Transient Slips / Moorings Total Number of Slips / Working VHF Channel Monitors / Working VHF Channel		Seasonal / Year-round Slips / Moorings		Maximum Amps		PGDFE / PGDFE / PGDFE		MIB / RSP / H / IR / All		R / All							
1	Gosman's Dock	631-668-2447		S	60	12/12							R	All					
2	Viking Fleet	631-668-5700		S			EXCURSION VESSELS												
3	Uihlein's Boat Rental & Marina	631-668-3799	14/14	40/	Y/	48	15/5	W	◆▲50	L25	PGWF	G	MIB	RSP	H	IR	All		
4	Montauk Marine Basin	631-668-5900	19/19	120/	Y/	140	6/6	WC	◆▲50	L70	PGDWE	GD	V	All	RSL	I	All		
5	Sportsman's Dock	631-668-5348		32/	Y/	100	7/6	WC	◆▲50					I	RSL				
6	Marlena's Yacht Club	631-406-4926			Y/	70	9/9	W	◆▲100	L50		GD	MIB	RSL			All		
7	Cove Marina	631-668-4101		70/	Y/	52	4/3	W	◆▲50	L40				MI	RS	I	All		
8	Westlake Marina	631-668-5600	/19	100/	Y/	45	6/6	W	◆▲50					MIB	RS	R	All		
9	Snug Harbor Motel & Marina	631-668-2860	16/9	80/	Y/	50	8/5	WC	◆50						RSL	HP	All		
10	Sam's Star Island Y.C. & Marina	631-668-5052	9/10	115/	S	170	7/7	WC	◆▲100	D	L70	PGDFE	GD	All	RSL	P	IR	All	
11	East Hampton Pumpout Station	631-267-8688	/73		S	40	8/8								P				
12	Inlet Seafood Restaurant	631-668-4272			Y/					DOCK-AND-DINE						I	R	R	MVA
13	East Lake Marina	860-659-7691		15/					◆50						RS				
14	<b>Montauk Anglers Club</b> p.47, 317 ★	<b>631-668-3232</b>	19/19	170/	Y/	S	130	8/6	W	◆▲100	D	LCT50	PGDFE	GD	MIB	RS	IR	All	
15	<b>Safe Harbor Montauk Yacht Club</b> inside back cover ★	<b>631-668-7732</b>	9/11	232/	Y/	S	300	12/8	WC	◆▲100	D				I	All	HPT	All	

Facilities continue, next page.

# Montauk and Napeague Harbors

 **Superyacht Destination**



million years ago when glaciers crept south and pushed mineral-rich mounds of rocks and soil with them. Montauk Point, the southern “flake” of the whale’s tail of Long Island’s East End, is what geologists call a terminal moraine: a heavy load of sedimentary rock bulldozed and then abandoned by the retreating glaciers. The pebbly beaches on the north side and high, sandy dunes on the south side are both inspiring.



In addition to leaving behind rocky rifts and sandy ocean beaches, those melting glaciers deposited layers of fertile soil farmed by the native Montaukettts. In 1648, European settlers from Massachusetts also appreciated the point’s richness, and the vast meadowlands soon overflowed with flocks of sheep and herds of cattle driven here from eastern Long Island along Old Montauk Highway.

Founded in 1658, Deep Hollow Ranch remains the birthplace of the American cowboy and America’s oldest cattle ranch. One of the most celebrated equestrians was none other

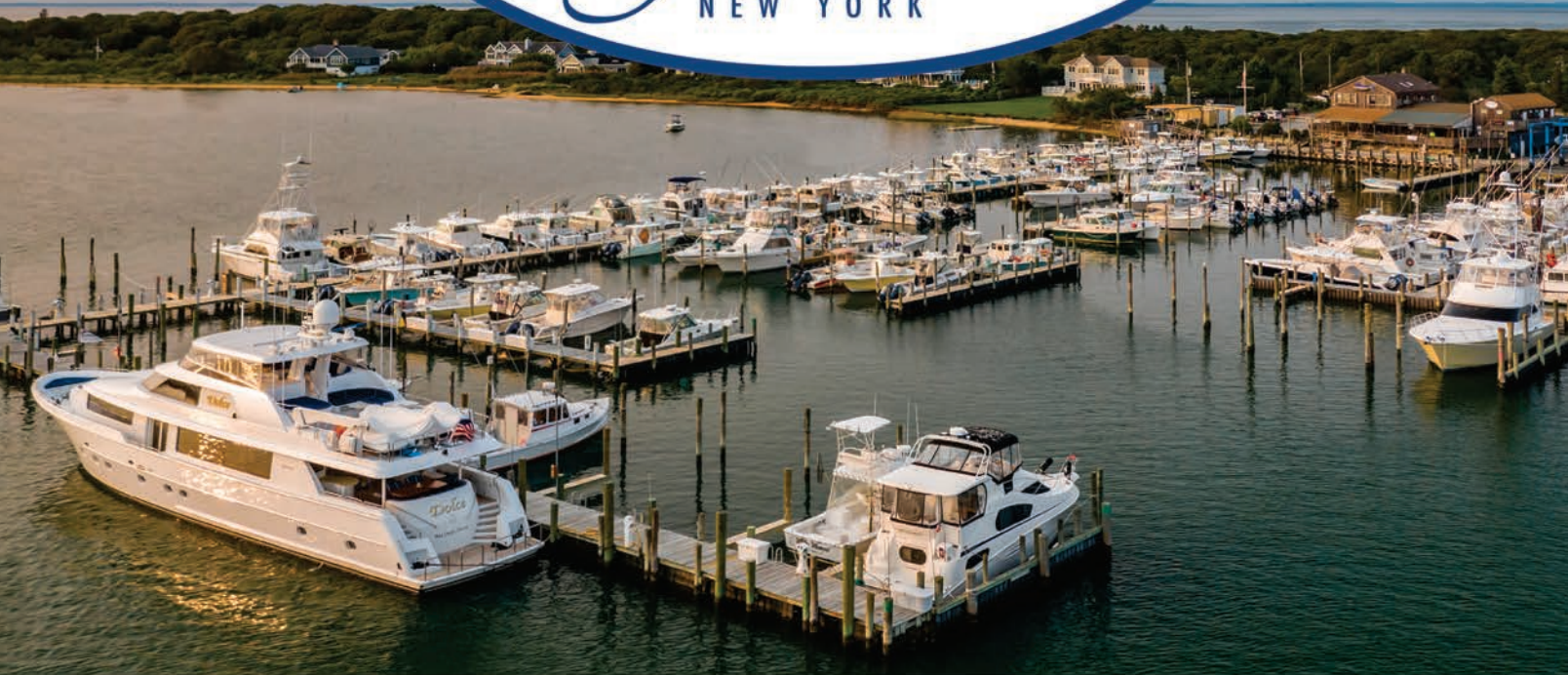
than Theodore Roosevelt and his Rough Riders (and 25,000 soldiers), who camped here under quarantine in 1898 after fighting the Spanish in Cuba.

In 1926, developer Carl Fisher paid \$2.5 million for 9,700 acres with 9 miles of choice waterfront property. Fisher envisioned this as the next Miami Beach, his best-known creation. He designed a golf course, yacht club, hotel and high-rise office building. His plan included cutting a channel from fresh-water Lake Montauk to Block Island Sound. He believed this would bring boats into Star Island, where he wanted to put a casino, marina and surf club. The 1929 stock-market crash decimated Fisher’s development company as well as his dreams, but his legacy remains, as does the Manor Hotel, the Fisher Building and a harbor bursting with marinas and sportfishing boats.

Aside from the landlubber’s delight within Long Island’s best-known port, Montauk is renowned as the unofficial

DOCKAGE		SERVICES		SUPPLIES		AMENITIES	
 Join: 800-395-2628 or visit BoatUS.com Get a tow: 800-391-4869   <b>Marine Facilities and Services</b> ★ <b>Superyacht Facility</b>		Approach / Dockside Depth in Feet at MLW Seasonal / Year-round Offers Transient Slips / Moorings Total Number of Slips / Moorings Monitors / Working VHF Channel		110V ♦ 220V ▲ 3 Phase ■ Maximum Amps Hookups: Water / Cable TV Ramp / Dinghy Dock / Launch Service Rail / Lift / Crane / Trailer Capacity (tons)		Restrooms / Showers / Laundry / Pumpout Marine / Groceries / Ice / Bait Fuel Brand V = ValvTect® Gas / Diesel	
16	Montauk Lake Club & Marina	631-926-1766	12/12	104/6	YY	S 200 8/8 WC ♦▲■100 D	GD I RSL HP IR All
PRIVATE—RECIPROCAL PRIVILEGES; PUBLIC FUEL DOCK							
17	Duryea's Montauk p.345	631-668-2410			YY	S 125	DOCK-AND-DINE GI R IR All

Information in these listings is provided by the facilities themselves. An asterisk (\*) indicates we have confirmed the facility's existence, but it did not respond to our request for updated information.



MONTAUK'S PREMIER SPORTFISHING MARINA



SPORT FISHING BOAT SERVICE WATERFRONT DINING MARINE STORE



DISCOVER MORE  
SCAN THE QR CODE WITH  
YOUR MOBILE CAMERA

467 EAST LAKE DRIVE | MONTAUK, NY 11954  
631.668.3232 | VHF CH. 19  
INFO@MONTAUKANGLERSCLUB.COM

CERTIFIED DEALER  
MASTER TECHNICIANS  
AND OEM PARTS



# Montauk and Napeague Harbors

## ★ Superyacht Destination

sportfishing capital of the Northeast. In season, anglers catch stripers, fluke, blues, false albacore, codfish, tilefish, weakfish, blackfish, sea bass, porgy, tuna, shark, marlin, mahi and more.

Today, this once traditional fishing community, featuring mates, dockhands and captains both gruff and grizzled, has a more genteel, touristy feel. While you'll still find fishing boats of all sorts and sizes (it remains the state's largest commercial fishing port), you'll also see a large fleet of pleasure boaters tucked into slips at the Montauk Anglers Club & Marina, Safe Harbor Montauk Yacht Club, Westlake Marina and Sam's Star Island Yacht Club, all rich with history and brimming with folks who can tell a good sea story. This is, after all, the port that the late shark hunter Captain Frank Mundus called home for decades.

Tempered, perhaps, by the opulence of the ritzy Hamptons, the large-scale investment in resort marinas, and the ever-increasing length, value and number of its pleasure fleet, Montauk remains a fun and magical port with an upscale but industrious atmosphere. Even touristy Montauk Village, a 3-mile trek from the harbor and the jumping-off spot for a visit to Montauk's famed lighthouse, seems more laid-back and industrious than points west in East Hampton Township.

## 📷 Things to See and Do

Montauk makes for such an attractive stop because of its ability to cater to any pace of life. Boating, hiking, dining, shopping, swimming and strolling down the beach are all in play, as is having a few cold ones if you feel so inclined. The catch — it isn't all available in the same place, for Montauk is a little more spread out than many first-time visitors expect.

For example, it's 9 miles from the eastern shore of Napeague Harbor around the point to Montauk Point Lighthouse. That's

a lot of area to cover, but don't fret; all the boating facilities are concentrated within relatively quaint Lake Montauk. This man-made harbor, once a fresh-water pond and thus not particularly deep if you stray outside the channels, is surrounded by an assortment of marinas and conveniences.

You'll need wheels, however, to actually visit the village of Montauk or gaze down from the top of the lighthouse. From July 4 to Labor Day, you can hop aboard the **Suffolk County Transit** (631-852-5200) bus 10C, which runs a loop around Montauk and into East Hampton. You can also take a ride with **Lindy's Taxi** (631-444-4444). It's about 6 miles from the village to Montauk Point Lighthouse.

Speaking of the lighthouse, this is the oldest in New York State. President George Washington authorized its construction in 1792. From the top, on a clear day, you can see more than 40 miles out over the ocean. **Montauk Point Lighthouse Museum** (2000 Montauk Hwy.; 631-668-2544) is your starting place. Located right at "the point," it has a keeper's house, old documents and photographs, plus an assortment of Fresnel lenses on display. You'll need to climb 137 steps to reach the top of the lighthouse, but the view is worth it.

On your return to Montauk Harbor, stop at the oldest cattle ranch in America, **Deep Hollow Ranch** (8 Old Montauk Hwy.; 631-668-2744). This 4,000-acre spread provides plenty of room to giddy-up on rustic trails, rolling meadows and the beach, and you can follow it all up with a great dinner.

Got your clubs aboard? Try the 18-hole golf course at **Montauk Downs State Park** (631-668-3781). When you call, you'll receive instructions on how to reserve online. If you're better at the short game, try miniature golf at **Puff & Putt** (659 Montauk Hwy.; 631-668-4473) in the village. The "Puff" part rents small sailboats and Hobie Cats (as well as kayaks



© SHORELINE AERIAL PHOTOGRAPHY

Montauk Anglers Club, right, and Safe Harbor Montauk Yacht Club, left, welcome superyachts, sportfishers, and everything in between.

# Montauk and Napeague Harbors

Superyacht Destination 

and pedal boats) on **Fort Pond**, which, by the way, is one of the two lakes on Long Island where you can catch walleye. The other is Lake Ronkonkoma, about 50 miles “up island.”

With scores of world-record catches landed in the ocean waters around the lighthouse, Montauk regards itself as the sportfishing epicenter of the Northeast. If big game (like tuna, marlin and shark) hooks your interest, consider booking a private charter for a run offshore. Over 60 charter boats reside at **Sam’s Star Island Yacht Club** (59 Star Island Road; 631-668-5052). Be there at 4 p.m. when the crews return with the day’s catch. Or try your luck aboard a Montauk party-fishing boat. It can be a little more crowded, but you can swap tales with other fishing enthusiasts on the **Viking Fleet** (631-668-5700), **Lazy Bones** (after 7 p.m. at 631-488-7018), **Ebb Tide II** (631-668-2818) or **Miss Montauk** (631-668-1545), all of which offer full- and half-day adventures.

If you desire something a little headier, **Sea Turtle Dive Charters** (352 W. Lake Drive; 631-335-6323) offers both inshore and offshore freediving trips for spear fishing. **Catamaran Mon Tiki** (32 Star Island Road; 631-668-2826) can comfortably accommodate groups of two to 100 passengers on a BYOB picnic and dog-friendly adventure aboard one of its many custom-built catamarans.

Shallow areas of Lake Montauk and Napeague Harbor are havens for kayaking and windsurfing. **Montauk Surf & Sports** (716 Montauk Hwy.; 631-668-9300) rents kayaks, surfboards and skimboards as well as beach chairs, umbrellas, bicycles and scooters. **Air & Speed Surf Shop** (795 Montauk Hwy.; 631-668-0356) and **CoreysWave Professional Surf Instruction** (631-668-9283) give lessons to those who want to learn how to hang ten or get paddleboard instructions.



**Harbor Pet Greenport**  
120 Main Street  
631-477-1518

Your Full-Service  
Pet Supply for  
Dog and Cat.  
Grooming & Self-Wash

info@harbor-pet.com • www.harbor-pet.com

Visiting beachcombers will relish here. On the north shore, the Block Island Sound beaches are generally rocky, while the Atlantic Ocean beaches on the south side feature smooth, sandy stretches that are fun for walking and swimming. Some rank them among the best on the Eastern Seaboard.

**Safe Harbor Montauk Yacht Club** (631-668-7732 or 668-3100), which is where you should escape for a few nights off the boat. Stay here and you’ll have your own private beach on the lake to enjoy the sun. With 35 acres, there is plenty of room to stretch your legs. Their deluxe accommodations include 107 stylish guest rooms, three pools, two restaurants, indoor and outdoor bars, tennis and pickleball courts, plus that private beach we just mentioned. With more than 200 wet slips that can accommodate boats up to 300 feet in length, this is the ultimate getaway. We’ll warn you: It’s going to be tough to leave this place, so anticipate staying longer than planned.



© SHORELINE AERIAL PHOTOGRAPHY

The Montauk Harbor entrance makes for an easy approach. Thanks to its ease of access, this can be one busy harbor. Make reservations when possible.

# Montauk and Napeague Harbors

★ Superyacht Destination

© SHORELINE AERIAL PHOTOGRAPHY



You'll need a trip by car to Montauk Point, but history buffs will love learning about New York's very first lighthouse at the Montauk Lighthouse Museum.

Our favorite beach might be the one right in front of **Gurney's Montauk Resort & Seawater Spa** (290 Old Montauk Hwy.; 631-668-2345), another place to escape the boat for a few nights. Their deluxe accommodations include a three-bedroom cottage that's suitable for your entire crew or visiting guests. Indulge in their Seawater Spa with its ocean-fed pool, sauna and steam room. Meet friends for dinner at **Scarpetta Beach** (631-668-1771), Gurney's Italian hotspot, or enjoy breakfast, lunch and comfort food at **Tillie's**, an inspired American kitchen that serves seasonal classics complimented by local Montauk produce.

Nature enthusiasts will find plenty within Montauk's impressive parks system. The dunes at **Hither Hills State Park** (631-668-2554) are a magical place and well worth the effort of getting a ride out of town. Visit during September and October and you can sample the wild cranberries that grow in the small bogs between the largest dunes.

For uninterrupted views, rolling bluffs and birdwatching, head over to **Camp Hero State Park** (50 S. Fairview Ave.; 631-668-3781). This 415-acre park occupies a portion of the former Montauk Air Force Station and is home to arguably some of the best sightseeing and photo opportunities that the area has to offer.

## 🍴 Restaurants and Provisions

### Montauk Harbor

Waterfront dining and drinking are easy to come by along the shores and docks of Lake Montauk. At Montauk Anglers Club, the **Gin Beach Cafe** (467 E. Lake Drive; 631-668-3474) has weekday happy hours in the late afternoon with

really reasonable specials on beer and cocktails. Live music is a nice accompaniment to the scene. It's open every day for lunch and dinner.

If you're staying at Safe Harbor Montauk Yacht Club, you have three restaurants on their grounds from which to choose. Check in at **The Pool Club** (631-668-3100), where you can sip a watermelon chili margarita while savoring a spicy sriracha lobster roll. At **Showfish** (631-668-3133), guests are encouraged to visit a fresh seafood display and choose what they'd like from a rotating menu, which the kitchen will then complement with vegetable-forward dishes highlighting ingredients from Long Island's East End farms. For those on the move, **Il Forno** (631-668-3100), or "The Oven" in Italian, offers the perfect pizza for grab-and-go convenience. Safe Harbor Montauk Yacht Club dockside room service takes everything up another notch.

At Westlake Marina, **Westlake Fish House** (631-668-3474) is an excellent seafood shack that is casual without sacrificing quality. It's also first-come, first-served so no reservations are taken. Get hooked for all three meals of the day, and don't leave without trying their New England style clam chowder. (Our New England editor gave it two thumbs up!)

Next to the ferry, the **Clam & Chowder House at Salivar's Dock** (470 W. Lake Drive; 631-668-6252) serves delicious seafood; there can be a wait, but it's worth it. At **La Fin** (474 W. Lake Drive; 631-668-8344), you'll find French farm-to-table fare.

Having replaced the popular Liar's Saloon is **Marlena's Pack Out**, a full-service bar at **Marlena's Yacht Club** (408 W. Lake Drive; 631-406-4926). At family-owned **Gosman's Dock** (500 W. Lake Drive; 631-668-2447), you can select

# Montauk and Napeague Harbors

Superyacht Destination 

from several Gosman's eateries that are right on the water. All can be reached at the dock phone number. **Gosman's Seafood Restaurant** has lobster rolls, shrimp baskets, fish and chips and more. **Topside** features panoramic views of Montauk Harbor with an assortment of fresh seafood options and an extensive cocktail menu. **Inlet Café & Sushi Bar** has refreshing daily specials and sushi that's as pleasing to the eye as it is to the palate. **Gosman's Clam Bar**, meanwhile, serves steamers, lobster rolls, grilled fish filets, clams on the half-shell and more. There's also a fish market/gourmet grocery on-site.

Next door to Gosman's, at the base of a commercial pier, **The Dock** (482 W. Lake Drive; 631-668-9778) is another anglers' hangout and the prices are reasonable.

If you want fish as fresh as right off the boat, set a course for **Inlet Seafood Restaurant** (541 E. Lake Drive; 631-668-4272). Owned by commercial anglers, this two-story American seafood eatery also offers sushi and inlet views. The libations aren't to be passed up either, with both alcoholic and non-alcoholic specialty drinks that you won't find anywhere else.

At the southern end of Lake Montauk, the **Crow's Nest Restaurant** (4 Old W. Lake Drive; 631-668-2077) emphasizes local organic fare with nightly fire pits and sunset views. Many sailors anchor in the lake, dinghy to the beach and walk up to the restaurant.

## Fort Pond Bay

Not nearly as busy as Montauk Harbor, you can take your dinghy to a small public beach (no lifeguards), walk over to the **Edward Vincent Ecker, Sr. County Park** with a nice dog run for Rover, and enjoy a beautiful sunset or stargazing after dark. Of course, you'll also want to check out the excellent restaurant choices here.

**Duryea's** (65 Tuthill Road; 631-668-2410) has long been a favorite and dates back to when Montauk Village centered on Fort Pond Bay. You'll find seafood cooked to perfection in one of eastern Long Island's most idyllic waterfront settings. Lingering on their deck afterward will cement a very cool summer memory. Stop by their market for morning coffee, breakfast, pastries and picnics-to-go that are perfect for eating aboard or on the beach. Their Lobster Deck has an outstanding raw bar, tasteful selection of starters, seafood platters, salads and shared main dishes. Also peek into Durea's eclectic boutique, too. While we were browsing we found a nice gift to bring to the hosts of our regular sundowner sessions.

A quarter mile to the north, **The Montauket Hotel** (88 Firestone Road; 631-668-5992) has waterfront dining, too. You'll find live music on the weekends and generous portions at a fair price. On Fort Pond Bay's south side, the **Navy Beach Restaurant** (16 Navy Road; 631-668-6868) attracts many boaters and landlubbers alike.

## Montauk Village

You'll find the **Montauk Chamber of Commerce** (742 Montauk Hwy.; 631-668-2428) a great source of help when

The most trusted guide for East Coast waters, since 1875

# ELDRIDGE

## TIDE AND PILOT BOOK

☛ Tides and currents from Nova Scotia to Key West ☛ Essential navigation, safety and weather information ☛ Articles on celestial navigation, fishing and maritime traditions

<http://eldridgetide.com>



Covering Connecticut, New Jersey, New York & Rhode Island

**Cruising Destinations • Maritime History**

**Local Boating News • Used Boat Listings**

**Fishing Reports • Much More!**


P.O. Box 1214 • Bellmore, NY 11710

**516-679-3645**

Subscriptions Available!



[www.liboatingworld.com](http://www.liboatingworld.com)

Like Us on Facebook 

planning a visit, and this village is laid out nicely, so finding a place to eat or shop is never much of a hassle.

Start with **Hampton Coffee Co.** (732 Montauk Hwy.; 631-668-8206) for coffee, of course, plus specialty drinks and café-style bites. For early risers and the lunch crowd there is also **John's Pancake House** (721 Montauk Hwy.; 631-668-2383), which serves exceptional doughnuts, huge omelets, lox and bagels, burgers and chowders. **Montauk Bake Shoppe** (29 The Plaza; 631-668-2439) is phenomenal, too.

The **Shagwong Tavern** (774 Montauk Hwy.; 631-668-3050), in the village center, has been open since 1969. They serve the requisite seafood as well as steaks, chops and racks of lamb. Fine dining is the specialty at **Harvest on Fort Pond** (11 S. Emery St.; 631-668-5574), where reservations are suggested. You can grab some takeout and head out to the patio at **Montauk Brewing Company** (62 S. Erie Ave.; 631-668-8471) while enjoying some Long Island-inspired ales.

It's easy to find supplies in the village, where specialty stores are just a short taxi or bus ride from the harbor. **Herb's Market** (778 Montauk Hwy.; 631-668-2335), **7-Eleven** (653 Montauk Hwy.; 631-668-2842) and **IGA** (654 Montauk Hwy.; 631-668-4929) are within a half-mile of each other.

## Charts

Use Maptech ChartKit Region 3, Pages 9 and 37; Maptech Waterproof Chartbook *Long Island Sound*; Maptech Waterproof Charts 1 and 6; and NOAA chart 13209 (1:40,000 and 1:7,500).



# Montauk and Napeague Harbors

## ★ Superyacht Destination

### 🌊 Tides and Currents

Use tide tables for New London. High tide at Montauk Harbor entrance is 24 minutes earlier, while low tide is 16 minutes earlier than at New London. The mean tidal range is 2.6 feet.

### 🚤 Navigation and Anchorages

Do yourself a favor and reserve a slip or mooring, especially on a weekend; Lake Montauk is very busy on summer weekends. It can be a very long trip to get there, so be sure you have a place to dock. The entrance to Montauk Harbor is 17 miles from Block Island and 14 miles from Orient Point.

**Montauk Point Light** (Fl 5s 168ft 14M HORN), a white and brown structure on the eastern end of Montauk Point, stands beside a simple, white building and a two-story, shingled keeper's house. If you're coming in from the east at sunrise, you'll notice that the point's dramatic cliffs take on a bright, reddish hue, which is due to their high iron content.

On the north side of the point is a shoal area that extends about 4 miles to the northwest, on which tidal rips develop and waves break. On the ebb, westbound sailors heading for Montauk Harbor may find the going slow, as they will be fighting the current and waves.

**From G "7SR" Fl G 2.5s BELL** marking **Shagwong Reef**, a southwest course will take you to RW "M" Mo (A) BELL just off the entrance to **Montauk Harbor**. If you have a deep-draft vessel, swing wide of **Shagwong Reef** before heading for the entrance.

Enter Montauk Harbor between two stone breakwaters marked by Fl G 4s 33ft 4M "1" on the east breakwater and Fl R 2.5s 36ft 5M "2" on the west breakwater. While the current at the harbor entrance is evident — generally 1 to 2 knots — it diminishes dramatically inside. The channel carries a reported depth of 8 to 13 feet. Since Montauk is a busy fishing town, watch out for fishing boats on the move at all hours. The 5-mph harbor speed limit is strictly enforced.

After passing through the breakwaters, you'll see **Star Island** dead ahead, connected to the mainland by a causeway. The Coast Guard station is on the northern end of the island, next to a town dock where commercial fishing boats tie up. On the mainland to the west, you'll find a concentration of marinas, restaurants and charter boats. Follow the privately marked channel, which has a reported depth of 8 feet to RN "8".

Visiting boaters will have plenty of options here. **Uihlein's Boat Rental & Marina** (631-668-3799) has been at the same location on the west side of the harbor for more than half a century. Neighboring **Montauk Marine Basin** (631-668-5900) is also worth checking out.

Farther inside, you'll find **Westlake Marina** (631-668-5600), which has a laid-back atmosphere and some of the best anglers and charter boat operations in Montauk at its dock. Their comprehensive bait and tackle shop is a great place to hang out for a while if you want to get the real scoop on the local catch. Their knowledgeable crew can help you find the best spots for a bite, on the hook or for your stomach. Westlake Marina handles vessels up to 45 feet LOA within their 100 slips.

Just to the east of the Star Island Coast Guard station is the **East Hampton Town Pumpout Station** (631-267-8688; VHF 73). The free pumpout, which is available from April to November, is self-service. Boats nearing 40 feet long and drawing 4 feet or more should steer in bow first at the end of the floating dock, where the depth is 8 feet. Where the floating dock meets a fixed dock, the depth shoals up to a range of 3 to 4 feet.

Across the lake to the east is another favorite gathering place for fishermen, the **Montauk Anglers Club** (631-668-3232). This family-oriented facility welcomes transients and superyachts up to 130 feet LOA. The 170-slip marina is fully equipped with gas and diesel fuel, a ships store and an on-site restaurant. Montauk Anglers Club's master technicians specialize in outboard service, maintenance and repower, and they also maintain and service gasoline inboard, I/O and diesel engines. The marina has a well-stocked parts department covering most manufacturers. The hospitable staff at Montauk Anglers Club is very responsive to a visitor's needs, most evident in the rave reviews they are always receiving. Friendly and helpful are probably the two words most frequently used by guests, and the team here takes pride in trying to satisfy all-comers.

Across the channel, on the east side of Star Island, is **Safe Harbor Montauk Yacht Club** (631-668-7732), the former marina of Gurney's Star Island Resort. You can spot it easily by looking for its white lighthouse tower. This well-appointed getaway includes a full-service spa among its impressive lineup of amenities, some of which we mentioned earlier. You and your crew will be pampered, and you're likely to stay longer than you originally planned. The fuel dock and ship's store, by the way, are conveniently open at 5 a.m.

If you're heading for the southern portion of **Lake Montauk**, stay close to Star Island to avoid the sandbar (marked by G "3" and G "5") that reaches out from the mainland. Another shoal area looms southeast of Fl G 2.5s "7." Be aware that the calm and safe water south of Star Island is a popular area for Jetskiing, water skiing, tubing, and wake and knee boarding.

🚩 The channel to the anchorage area is clearly marked. Stay in the middle, as there are some shallow spots — as low as 3 feet — just off the buoys. The East Hampton Bay Constable reports that the channel has more depth than reported on the chart, but if you have any doubts, hail him on VHF 16.

**CAUTION:** The southern half of Lake Montauk, south of G "7," has shoaled up to less than the 8 feet reported on the NOAA chart. The harbormaster warns against anchoring in this shallow area unless your draft is minimal.

### Fort Pond Bay

🚩 If you are looking for a quiet and deep anchorage, head for **Fort Pond Bay**, 3 miles west of Montauk Harbor. One of the best places to catch a sunset on Log Island's South Fork, expansive Fort Pond Bay is blessed with plenty of deep water. It is also fairly well protected from northeast, east and



© SHORELINE AERIAL PHOTOGRAPHY

Appropriately named Westlake Marina, foreground, buttresses the businesses to the west of Star Island, the gem at the center of Montauk Harbor.

southeast winds — although it can get bumpy when stiff breezes originate from the west or southwest.

From G “7SR” Fl G 2.5s BELL off Shagwong Reef, take a 4-mile southwest course; swing wide of Shagwong Reef and **Culloden Point** before turning south into the bay. The original Montauk Village was located here before its destruction in a 1938 hurricane. The village is now 1.5 miles south by foot or taxi.

While much of the shoreline is private property, you can dock and dine at **Duryea’s Montauk** (631-668-2410) on the bay’s east side. They can handle vessels up to 120 feet LOA for a daytime visit (no overnight stays). More on Duryea’s can be found earlier in this chapter within the Restaurants and Provisions section.

On the south side of Fort Pond Bay, take your dinghy to the **Navy Beach Restaurant** (16 Navy Road; 631-668-6868), or let them ferry you back and forth. The pier at the neighboring **Roughriders Landing Condos** is private, and no docking is allowed. The shoreline on the bay’s west side at **Edward Vincent Ecker, Sr. County Park** is very rocky, so we wouldn’t recommend landing there.

## Napeague Harbor

While Montauk is a busy port, **Napeague Harbor** is definitely not. Save for a few misleading trout stakes and “Tick Infested Area” signs, you’ll find little help in the way of markings as you make your way toward the shore. The approach is extremely shallow and tight, and no anchoring is allowed. **Visit only in a small boat, and only on a rising tide.**

**Approaching from the west**, follow the buoyed passage south of **Gardiners** and **Cartwright islands**. Tidal velocity in

the channel averages about 1.5 knots. **Approaching from any direction**, wait until you’re at least a half-mile southwest of R N “2” before heading toward the entrance. It is very shallow off **Goff Point**. The entrance on the south side of **Hicks Island** has shoaled to a depth of less than 4 feet. The channel is very narrow and, as the tides change, the current is swift. The entrance is mainly for local boaters who use the town ramp on **Lazy Point**. It is best to enter here at half or full tide.

## Acabonack Harbor

Just west of Cartwright Island, **Acabonack Harbor** has a narrow channel with privately maintained markers. You’ll be making your turn about 800 yards northwest of R N “8,” taking care to watch for the rocks near the entrance. The channel is 2.5 feet deep, but there is more water inside. Keep a sharp eye as you pass in and out of this little harbor, as it is a favorite area of local kayakers.

## Superyacht Facilities

**Montauk Anglers Club** 631-668-3232

**Safe Harbor Montauk Yacht Club** 631-668-7732

## Shoreside and Emergency Services

**Airport:** Montauk 631-668-3738

**Ferry:** Viking Fleet 631-668-5700

**Harbormaster/Marine Patrol:** 631-329-3078

**Tow Service:**

—Sea Tow 800-4SEATOW or VHF 16

—TowBoatU.S. 800-391-4869 or VHF 16 