

**SIMRAD®**

**AP™ 44**

**Operator Manual**

**ENGLISH**





# Preface

---

## Disclaimer

As Navico is continuously improving this product, we retain the right to make changes to the product at any time which may not be reflected in this version of the manual. Please contact your nearest distributor if you require any further assistance.

It is the owner's sole responsibility to install and use the equipment in a manner that will not cause accidents, personal injury or property damage. The user of this product is solely responsible for observing maritime safety practices.

NAVICO HOLDING AS AND ITS SUBSIDIARIES, BRANCHES AND AFFILIATES DISCLAIM ALL LIABILITY FOR ANY USE OF THIS PRODUCT IN A WAY THAT MAY CAUSE ACCIDENTS, DAMAGE OR THAT MAY VIOLATE THE LAW.

This manual represents the product as at the time of printing. Navico Holding AS and its subsidiaries, branches and affiliates reserve the right to make changes to specifications without notice.

### **Governing language**

This statement, any instruction manuals, user guides and other information relating to the product (Documentation) may be translated to, or has been translated from, another language (Translation). In the event of any conflict between any Translation of the Documentation, the English language version of the Documentation will be the official version of the Documentation.

## Copyright

Copyright © 2020 Navico Holding AS.

## Warranty

The warranty card is supplied as a separate document. In case of any queries, refer to the brand website of your unit or system:

[www.simrad-yachting.com](http://www.simrad-yachting.com)

## Compliance statements

### Europe

Navico declare under our sole responsibility that the product conforms with the requirements of:

- CE under EMC Directive 2014/30/EU

### United States of America

**⚠ Warning:** The user is cautioned that any changes or modifications not expressly approved by the party responsible for compliance could void the user's authority to operate the equipment.

### Australia and New Zealand

Navico declare under our sole responsibility that the product conforms with the requirements of:

- level 2 devices of the Radiocommunications (Electromagnetic Compatibility) standard 2017

### Declarations

The relevant declarations of conformity are available at:  
[www.simrad-yachting.com](http://www.simrad-yachting.com)

## Trademarks

®Reg. U.S. Pat. & Tm. Off, and ™ common law marks. Visit [www.navico.com/intellectual-property](http://www.navico.com/intellectual-property) to review the global trademark rights and accreditations for Navico Holding AS and other entities.

- Navico® is a registered trademark of Navico Holding AS.
- SIMRAD® is a trademark of Kongsberg Maritime AS, Licensed to Navico Holding AS.
- NMEA® and NMEA 2000® are registered trademarks of the National Marine Electronics Association.

- NAC™
- AP™

## About this manual

This manual is a reference guide for operating the unit. It assumes that all equipment is installed and configured, and that the system is ready to use.

Images used in this manual might not exactly match the screen on your unit.

### Important text conventions

Important text that requires special attention from the reader is emphasized as follows:

→ **Note:** Used to draw the reader's attention to a comment or some important information.

**⚠ Warning:** Used when it is necessary to warn personnel that they should proceed carefully to prevent risk of injury and/or damage to equipment/personnel.

### Translated manuals

Available translated versions of this manual can be found on the following website:

- [www.simrad-yachting.com](http://www.simrad-yachting.com)



# Contents

---

## **9 Introduction**

- 10 Front panel and keys
- 11 The autopilot page

## **12 Basic operation**

- 12 Safe operation with the autopilot
- 12 Turning the unit on and off
- 13 Operating the menu system
- 14 Display setup

## **15 Autopilot modes**

- 15 Selecting an autopilot mode
- 15 Standby mode
- 15 Follow-up (FU) mode
- 15 AUTO mode (Heading hold)
- 17 Wind mode
- 18 NoDrift mode
- 19 Heading capture
- 19 NAV mode
- 21 Turn pattern steering
- 25 Using the autopilot in an EVC system
- 25 SteadySteer

## **26 Trip log**

## **27 Alarms**

- 27 Alarm indication
- 27 Acknowledging the alarms
- 28 Enabling the alarm system and the alarm siren
- 29 Alarm history

## **30 Software setup**

- 30 Calibration
- 35 Damping
- 36 Autopilot settings
- 36 System settings

<b>41</b>	<b>Maintenance</b>
41	Preventive maintenance
41	Cleaning the display unit
41	Checking the connectors
42	Software update
<b>44</b>	<b>Menu tree</b>
<b>46</b>	<b>Technical specifications</b>
<b>47</b>	<b>Dimensional drawing</b>
<b>48</b>	<b>Terms and abbreviations</b>
<b>50</b>	<b>Supported data</b>
50	NMEA 2000 PGN (transmit)
50	NMEA 2000 PGN (receive)



# 1

## Introduction

---

The AP44 is a networked autopilot display and control unit.

The unit is compatible with a range of Navico autopilot computers.

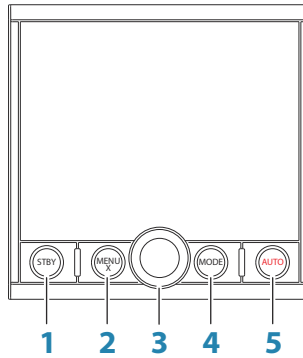
The AP44 systems include several modules that need to be mounted in different locations on the vessel and that need to interface with at least three different systems on the boat:

- The boat's steering system
- The boat's electrical system (input power)
- Other equipment onboard

All parts of the autopilot system must be installed and configured according to supplied documentation prior to using the autopilot. The following steps are required:

- Mechanical installation and wiring of all units. Refer to separate documentation for the units
- Software setup of the system. Refer to "*Software setup*" on page 30
- Commissioning and setup of the autopilot computer. Refer to the installation and commissioning documentation for your autopilot computer

## Front panel and keys



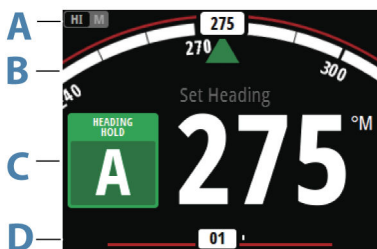
- 1** STBY key  
Press to turn the autopilot to Standby mode.
- 2** MENU/X key  
With no menu active:
  - Press to display the Settings menu
  - Press and hold to display the Display setup dialogMenu and dialog operation:
  - Press to return to previous menu level or to exit a dialog
- 3** Rotary knob  
Menu and dialog operation:
  - Turn to move up and down in menus and dialogs
  - Turn to adjust a value
  - Press to select a menu option and to enter the next menu levelIn STBY mode:
  - Press to select FU modeIn FU mode:
  - Turn to set rudder angleIn AUTO, NoDrift and Wind mode:
  - Turn to change set heading/set course/set wind angle

- 4** MODE key  
Press to display the Mode list
- 5** AUTO key  
Press to turn the autopilot to AUTO mode

## The autopilot page

The content of the autopilot page varies with active mode. All modes include:

- Response/ Profile mode (depending on connected autopilot computer) (**A**)
- Heading indicator, analog and digital (**B**)
- Autopilot mode indication (**C**)
- Rudder indicator, analog and digital (**D**)



For more information, refer to the separate mode descriptions and to the "*Terms and abbreviations*" on page 48.

# 2

## Basic operation

---

### Safe operation with the autopilot

⚠ **Warning:** An autopilot is a useful navigational aid, but DOES NOT replace a human navigator.

⚠ **Warning:** Ensure the autopilot has been installed correctly, commissioned and calibrated before use.

Do not use automatic steering when:

- In heavy traffic areas or in narrow waters
- In poor visibility or extreme sea conditions
- When in areas where use of an autopilot is prohibited by law

When using an autopilot:

- Do not leave the helm unattended
- Do not place any magnetic material or equipment near the heading sensor used by the autopilot system
- Verify at regular intervals the course and position of the vessel
- Always switch to Standby mode and reduce speed in due time to avoid hazardous situations

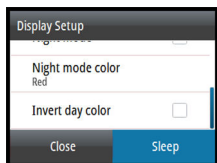
### Turning the unit on and off

The unit has no power key, and it will be running as long as power is connected to the NMEA 2000 network backbone.

### First time startup

When the unit is started for the first time and after a factory reset, the unit displays a setup wizard. Respond to the setup wizard prompts to select some fundamental setup options. These settings can later be changed and further configuration made as described in "*Software setup*" on page 30.

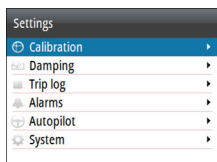
## Sleep mode



In Sleep mode, the backlight for screen and keys are turned off to save power. The system continues to run in the background.

You select Sleep mode from the Display setup dialog, activated by pressing and holding the **MENU** key. Switch from Sleep mode to normal operation by a short press on the **MENU** key.

## Operating the menu system

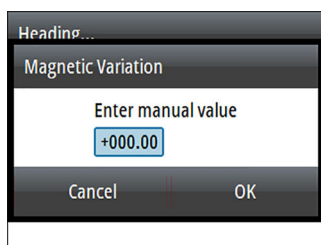


All settings and configuration in the unit are available from the Settings menu, activated by pressing the **MENU** key.

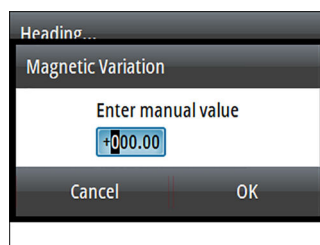
- Turn the Rotary knob to move up and down in the menus and in the dialogs
- Confirm a selection by pressing the Rotary knob
- Return to previous menu level by pressing the **MENU** key

## Edit a numeric value

1. Turn the Rotary knob to select the entry field
2. Press Rotary knob to turn the field into edit mode
  - The left digit starts flashing
3. Turn the Rotary knob to set the value for the flashing digit
4. Press the Rotary knob to move focus to the next digit
5. Repeat step 3 and 4 until all digits are set
6. Press the Rotary knob to leave edit mode for the selected field
7. Turn the Rotary knob to select the Cancel or Save buttons, then press the Rotary knob to confirm your selection and to close the dialog



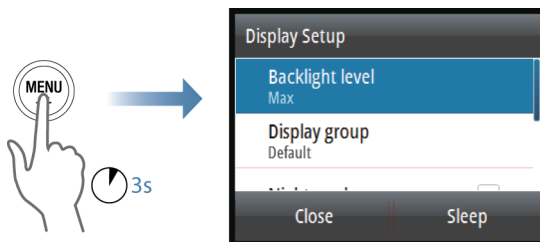
*Selected field*



*Field in edit mode*

→ **Note:** You can at any time press the **MENU** key to leave a dialog without saving the entries.

## Display setup



The display setup can be adjusted at any time from the Display setup dialog, activated by pressing and holding the **MENU** key.

The following options are available:

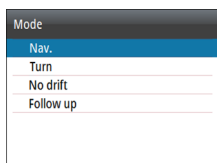
- Backlight level: Adjusts the backlight level from Min (10%) to Max (100%) in 10% increments
    - When the Backlight level field is active, subsequent presses on the **MENU** key adjusts backlight level in decrements of 30%
  - Display group: Defines which network group the unit belongs to
  - Night mode: Activates/deactivates the night mode color palette
  - Night mode color: Sets the night mode color palette
  - Invert day color: Changes the background color for the pages from default black to white
  - Sleep: Turns the backlight for screen and keys off to save power
- **Note:** All changes made to the display setup will apply to all units belonging to the same display group. For more information about network groups, refer to "*Network groups*" on page 39.

# 3

## Autopilot modes

The autopilot has several steering modes. The number of modes and features within the mode depend on the autopilot computer, the boat type and available inputs, as explained in the description of the following steering modes.

### Selecting an autopilot mode



You select Standby mode and AUTO mode by pressing the dedicated **STBY** and **AUTO** keys.

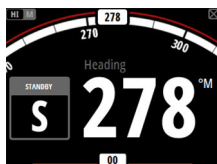
You select other modes and automatic features by selecting the relevant option from the Mode list, activated by pressing the **MODE** key.

### Standby mode

Standby mode is used when you steer the boat at the helm.

- Switch to Standby mode by pressing the **STBY** key.

→ **Note:** If sensor data vital for autopilot operation (e.g. rudder response) is lost when the autopilot is running in an automatic mode, the system will automatically switch to Standby mode.



### Follow-up (FU) mode

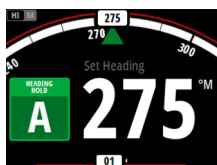
In FU mode you turn the rotary knob to adjust the set rudder angle.

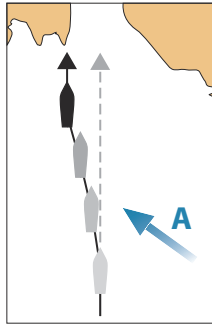
The rudder will move to the commanded angle and then stop.

- Switch to FU mode from any mode by selecting the Follow-up option in the Mode list, or switch directly from Standby mode to FU mode by pressing the rotary knob.

### AUTO mode (Heading hold)

In AUTO mode the autopilot issues rudder commands required to steer the vessel automatically on a set heading. In this mode the autopilot does not compensate for any drifting caused by current and/or wind (**A**).





- Switch to AUTO mode by pressing the **AUTO** key. When the mode is activated, the autopilot selects the current boat heading as the set heading.

### Changing set heading in AUTO mode

You adjust the set heading by turning the rotary knob.

An immediate heading change takes place. The new heading is maintained until a new heading is set.

### Tacking and Gybing in AUTO mode

→ **Note:** Only available when the boat type is set to SAIL.

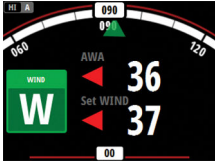
Tacking and Gybing in AUTO mode uses the heading as reference. The tacking/gybing operation changes the set heading to port or starboard with a fixed angle.

The tacking parameters are set in the Setup/Sailing parameters: The **Tack angle** defines the tacking angle, while the **Tack time** defines the rate of turn during the tack/gybe. Refer to "*Autopilot settings*" on page 36.

- Initiate the Tack or Gybe function by selecting the **Tack/Gybe** option in the Mode list.
  - The turn is started when the direction is selected in the dialog.



## Wind mode



- **Note:** Wind mode is only available when the boat type is set to SAIL. It is not possible to activate wind mode if wind information is missing.

When wind mode is engaged, the autopilot captures the current wind angle as steering reference, and adjusts the heading of the boat to maintain this wind angle.

Prior to entering wind mode the autopilot system must be operating in AUTO mode and with valid input from the wind transducer.

- Switch to Wind mode by selecting the Wind option in the Mode list

**⚠ Warning:** In wind mode the autopilot steers to the apparent or true wind angle and not to a compass heading. Any wind shift could result in the vessel steering on an undesired course.

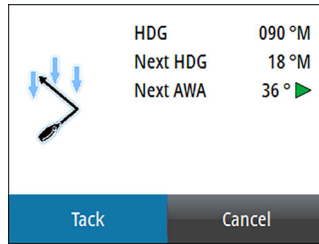
### Tacking and Gybing in Wind mode

Tacking and Gybing in Wind mode can be performed when sailing with apparent or true wind as the reference. In either case the true wind angle must be less than 90 degrees (tacking) and more than 120° (gybing).

The tacking/gybing operation will mirror the set wind angle on the opposite tack.

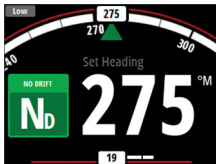
The rate of turn during the tack/gybe is set by the **Tack time** in the Setup/Sailing menu. Refer to "*Autopilot settings*" on page 36.

- Initiate the Tack or Gybe function by selecting the **Tack/Gybe** option in the Mode list.
- Confirm the tack/gybe in the dialog.



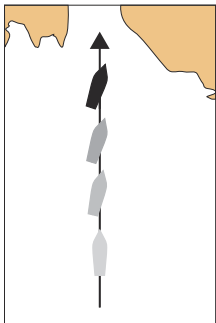
- **Note:** The autopilot will temporarily add a 5 degree bear-away on the new tack to allow the boat to pick up speed. After a short period the wind angle will return to the set angle.
- **Note:** If the Tack/Gybe is not confirmed the dialog will close after 10 seconds, and the requested tack/gybe will not be initiated.

## NoDrift mode



- **Note:** It is not possible to select NoDrift mode if GPS position and heading information is missing.

In NoDrift mode the vessel is steered along a calculated track line, from present position and in a direction set by the user. If the vessel is drifting away from the track line due to current and/or wind (**A**), the vessel will follow the line with a crab angle.



Prior to entering NoDrift mode the autopilot system must be operating in AUTO mode and with valid input from GPS and heading sensor.

- Switch to NoDrift mode by selecting the **NoDrift** option in the Mode list
  - The autopilot will draw an invisible track line based on current heading from the vessel's position

The autopilot will now use the position information to calculate the cross track distance, and automatically steer along the calculated track.

### Changing set course in NoDrift mode

You adjust the set course by turning the rotary knob.

An immediate course change takes place. The new course is maintained until a new course is set.

## Dodging

→ **Note:** Only available for AC12N/AC42N autopilot computers.

If you need to avoid an obstacle when using NoDrift mode, you can set the autopilot to Standby mode and power steer or use the helm until the obstacle is passed.

If you return to NoDrift mode within 60 seconds you can select to continue on previous set bearing line.

If you do not respond, the dialog disappears and the autopilot goes to NoDrift mode with current heading as set bearing line.

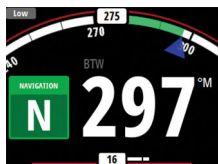
## Heading capture

When the vessel is turning in AUTO mode, an instant re-press on the **AUTO** key activates the heading capture function. This will automatically cancel the turn, and the vessel will continue on the heading read from the compass the very moment you pressed the **AUTO** key.

## NAV mode

→ **Note:** NAV mode requires a compatible chartplotter connected to the network.

It is not possible to select NAV mode if heading information is missing, or if steering information is not received from the external chartplotter.



**Warning:** NAV mode should only be used in open waters. Navigation mode must not be used while sailing, as course changes may result in unexpected tacks or gybes!

In NAV mode the autopilot uses steering information from an external chartplotter to direct the vessel to one specific waypoint location, or through a series of waypoints.

In NAV mode, the autopilot's heading sensor is used as heading source for course keeping. Speed information is taken from SOG or from selected speed sensor. The steering information received from the external chartplotter alters the set course to direct the vessel to the destination waypoint.

To obtain satisfactory navigation steering, the autopilot system must have valid input from the chartplotter. Autosteering must be tested and determined satisfactory prior to entering NAV mode.

→ **Note:** If the chartplotter does not transmit a message with bearing to next waypoint, the autopilot will steer using Cross Track Error (XTE) only. In that case you must revert to AUTO mode at each waypoint and manually change set course to equal bearing to next waypoint and then select NAV mode again.

Prior to entering NAV mode the chartplotter must be navigating a route or towards a waypoint.

- Initiate NAV mode by selecting the **NAV** option in the Mode list
- Confirm to switch to NAV mode in the dialog.

Course change required to navigate:

Confirm

Destination:	Rpt027
Bearing:	146 °M
Course change:	147 °

Yes No

## Turning in NAV mode

When your vessel reaches a waypoint, the autopilot will give an audible warning and display a dialog with the new course information.

There is a user defined limit for the allowed automatic course change to next waypoint in a route. If the course change is more than this set limit, you are prompted to verify that the upcoming course change is acceptable.

- If the required course change to the next waypoint is less than the course change limit, the autopilot will automatically change the course. The dialog will disappear after 8 seconds unless cleared by the Pages key.
- If the required course change to next waypoint is more than the set limit, you are prompted to verify that the upcoming course change is acceptable. If the turn is not accepted, the vessel will continue with the current set heading.

Navigation course change:

Destination:	Rpt026
Bearing:	016 °M
Course change:	17 °

Cancel

Course change less than set limit

Course change required to navigate:

Confirm

Destination:	Rpt027
Bearing:	146 °M
Course change:	147 °

Yes No

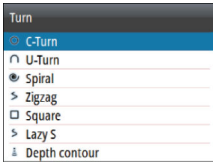
Course change larger than set limit

The limit for automatic course change is set during commissioning of the autopilot computer. For more information refer to "Autopilot settings" on page 36.

## Turn pattern steering

The system includes a number of automatic turn steering features when the autopilot is in AUTO mode.

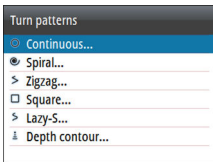
→ **Note:** Turn pattern steering is not available if the boat type is set to Sail. Instead the tack/gybe feature is implemented.



## Turn variables

All turn patterns, except the U-turn, have settings that you adjust before you start a turn or at any time when the boat is in a turn.

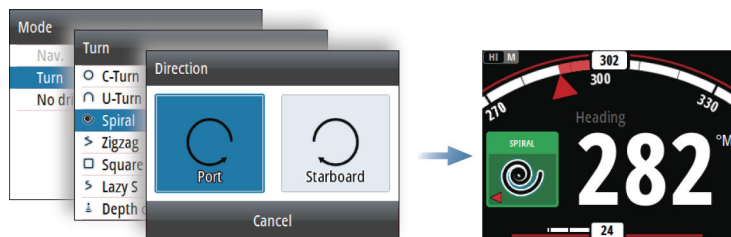
The turn settings are available from the Autopilot settings dialog. The variables are described for each turn pattern option in the following pages.



## Starting and stopping a turn

→ **Note:** For starting a DCT turn, see "Depth contour tracking (DCT)" on page 23.

You start the turn by selecting the turn option in the Mode list, followed by selecting the port or starboard options in the turn dialog to select the turn direction.



You can at any time stop the turn by pressing the **STBY** key to return to Standby mode and manual steering.

### **C-turn (Continuous turn)**

Steers the vessel in a circle.

- Turn variable:
  - Rate of turn. Increasing the value makes the vessel turn a smaller circle.

### **U-turn**

Changes the current set heading to be 180° in the opposite direction.

The turn rate is set during commissioning of the autopilot computer. For more information refer to "*Autopilot settings*" on page 36.

### **Spiral turn**

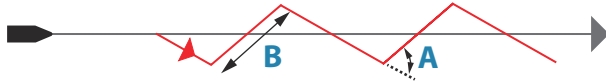
Makes the vessel turn in a spiral with a decreasing or increasing radius.

- Turn variables:
  - Initial radius
  - Change/turn. If this value is set to zero, the boat will turn in a circle. Negative values indicate decreasing radius while positive values indicate increasing radius.

### **Zigzag turn**

Steers the vessel in a zigzag pattern.

- Turn variables:
  - Course change (**A**)
  - Leg distance (**B**)



### Square turn

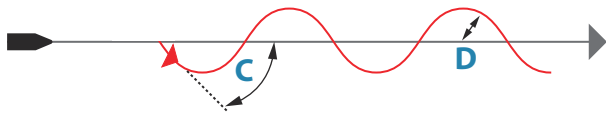
Makes the vessel automatically turn 90° after having travelled a defined leg distance.

- Turn variable:
  - Leg distance

### S-turn

Makes the vessel yaw around the main heading.

- Turn variables:
  - Course change (**C**)
  - Turn radius (**D**)

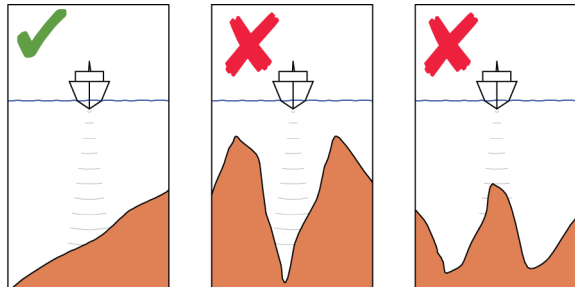


### Depth contour tracking (DCT)

Makes the autopilot follow a depth contour.

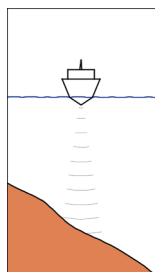
→ **Note:** DCT turn pattern is only available if the system has a valid depth input.

⚠ **Warning:** Do not use the DCT turn pattern unless the seabed is suitable. Do not use it in rocky waters where the depth is varying significantly over a small area.

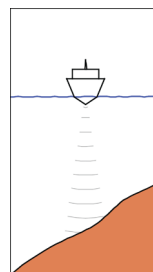


To initiate a DCT turn:

- Ensure that you have depth reading on the panel or on a separate depth instrument
- Steer the boat to the depth you want to track, and in the direction of the depth contour
- Activate AUTO mode, then select depth contour tracking while monitoring the depth reading
- Select the port or starboard option in the turn dialog to initiate the depth contour steering to follow the bottom sloping to starboard or to port



*Port option  
(depth decreases to port)*

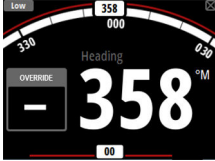


*Starboard option  
(depth decreases to starboard)*

- Turn variables:
  - Depth gain. This parameter determines the ratio between commanded rudder and the deviation from the selected depth contour. The higher depth gain value the more rudder is applied. If the value is too small it will take a long time to compensate for drifting off the set depth contour, and the autopilot will fail to keep the boat on the selected depth. If the value is set too high the overshoot will increase and the steering will be unstable.
  - CCA. The CCA is an angle that is added to or subtracted from the set course. With this parameter you can make the boat yaw around the reference depth with S-movements. The larger the CCA the bigger yawing will be allowed. If the CCA is set to zero there is no S-ing.
  - Ref. depth. This is the reference depth for the DCT function. When DCT is initiated the autopilot reads the current depth and set this as the reference depth. The reference depth can be changed when the function is running.



- **Note:** If depth data is lost during DCT the autopilot will automatically switch to AUTO mode.  
It is recommended to turn ON the AP Depth Data Missing alarm when using DCT. When this alarm is activated an alarm will be raised if the depth data is lost during DCT.



## Using the autopilot in an EVC system

When the autopilot is connected to an EVC system, you can take manual control of the steering regardless of the autopilot mode. The mode indicator is replaced by a dash to indicate EVC override. The autopilot goes into standby mode if no rudder command is given from the EVC system within a predefined period.

## SteadySteer

The SteadySteer feature allows you to control how the autopilot system reacts to manual steering.

When enabled:

- Manual steering overrides the active mode.
- If Auto mode or NoDrift mode was active before going into manual steering, they will automatically re-engage when the vessel has stabilized on a new course.
- If NAV mode was active before going into manual steering a dialog will be shown.
  - Confirm course change to reactivate NAV mode.
  - Cancel the course change to activate Auto mode on the new heading.
  - If no action is taken the autopilot will go into Standby mode.

For any other modes, the autopilot goes into Standby mode.

When disabled:

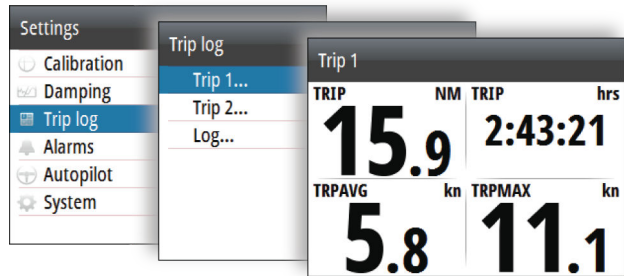
- Manual steering overrides the active mode.
- Independent of modes, the autopilot goes into Standby mode.

Refer to the documentation for your autopilot computer for more information.

# 4

## Trip log

The Trip log is available from the Settings menu.



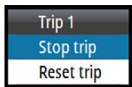
There are three log options available:

- Trip 1: records distance traveled through the water (Log input)
- Trip 2: records distance traveled via GPS input
- Log: shows total distance run from system installation or from a system restore

→ **Note:** Trip 1 requires correctly calibrated boat speed for accurate trip records.

Trip 2 requires a compatible GPS connected to the network.

You start, stop and reset the active Trip log from the menu, activated by pressing the rotary knob.



# 5

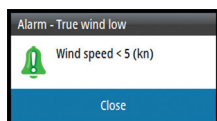
## Alarms

The system continuously checks for dangerous situations and system faults while the system is running. The alarm system can be activated if any alarm settings are exceeded.

→ **Note:** If sensor data vital for autopilot operation (e.g. rudder response) is lost when the autopilot is running in an automatic mode, the system will automatically switch to Standby mode.

### Alarm indication

An alarm situation is indicated with an alarm pop-up. If you have enabled the siren, the alarm message is followed by an audible alarm.



A single alarm is displayed with the name of the alarm as the title, and with details for the alarm.

If more than one alarm is activated simultaneously, the alarm pop-up can display 2 alarms. The alarms are listed in the order they occur with the alarm activated first at the top. The remaining alarms are available in the Alarms dialog.

### Type of messages

The messages are classified according to how the reported situation affects your vessel. The following color codes are used:

Color	Importance
Red	Critical alarm
Orange	Important alarm
Yellow	Standard alarm
Blue	Warning
Green	Lite warning

### Acknowledging the alarms

The most recent alarm is acknowledged by pressing the rotary knob.

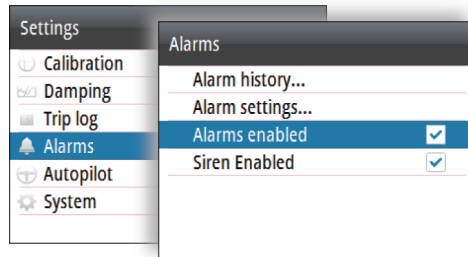
This removes the alarm notification, and silences the alarm from all units that belong to the same alarm group. A reminder reappears at given intervals for as long as the alarm condition exists.

→ **Note:** An alarm received from non Navico units on the network must be acknowledged on the unit generating the alarm.

## Enabling the alarm system and the alarm siren

You enable the alarm system and the alarm siren from the Alarms menu.

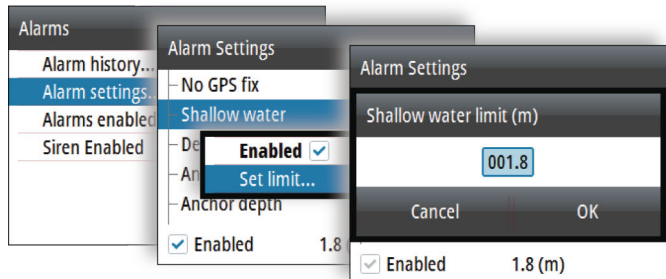
It is recommended that you enable all autopilot alarms when using an autopilot.



### Individual alarm settings

You enable/disable the single alarm and set the alarm limits from the Alarms settings dialog.

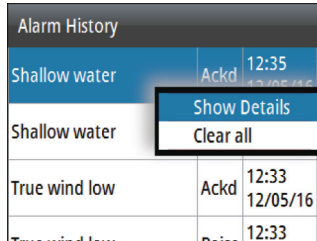
- Press the rotary knob to display the menu from where you can enable/disable the alarm and set the alarm limit



## Alarm history

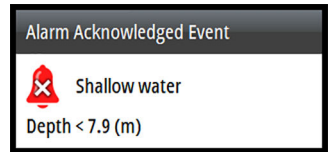
The Alarm history dialog stores alarm messages until they are manually cleared.

You show alarm details for a selected alarm and clear all alarms in the alarm history by pressing the rotary knob when the Alarm history dialog is active.




Alarm History		
Shallow water	Ackd	12:35
Shallow water		
True wind low	Ackd	12:33
		12/05/16
		12:33

*Menu options*



Alarm Acknowledged Event

 Shallow water

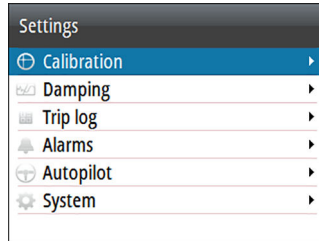
Depth < 7.9 (m)

*Alarm details*

# 6

## Software setup

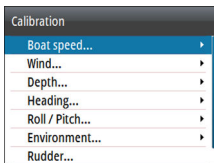
Prior to use, the AP44 requires a number of settings be configured in order for the system to perform as expected. Access to the required options are found in the Settings menu, accessed by pressing the **MENU** key.



- **Note:** The following settings are described in other sections of this manual:  
"Trip log" on page 26  
"Alarms" on page 27

### Calibration

- **Note:** Once the unit is setup and before you proceed with calibration ensure all network sources are selected and configured. Refer to "*System settings*" on page 36.



#### Boat speed

Speed calibration is necessary to compensate for hull shape and paddlewheel location on your boat. For accurate speed and log readings, it is essential that the paddlewheel is calibrated.

#### SOG reference

This is an auto calibration option that uses speed over ground (SOG) from your GPS, and compares the average of SOG against the average boat speed from the speed sensor for the duration of the calibration run.

- **Note:** This calibration should be made in calm sea with no effect from wind or tidal current.

- Bring the boat up to cruising speed (above 5 knots), then
- Select the **SOG reference** option

When the calibration is completed the Boat speed calibration scale will show the adjusted percentage value of the boat speed.

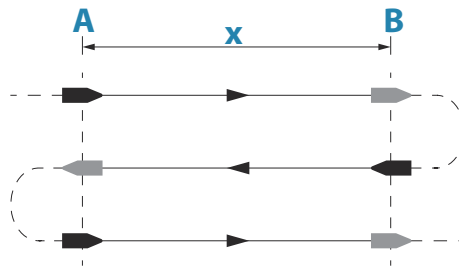
### **Distance reference**

Allows you to calibrate the log via a distance reference. You will need to complete consecutive runs, under power at a constant speed made along a given course and distance.

- **Note:** The distance should be greater than 0.5 NM, ideally 1 NM. To eliminate the effect of tidal conditions it is advisable to perform at least two runs, preferably three, along the measured course.

Referring to the diagram, **A** and **B** are the markers for each run. **X** is the actual distance for each run.

- Enter the desired distance in nautical miles that you would like to calculate the distance reference over
- When the boat gets to the predetermined starting position of the distance reference calculation, start the calibration timer
- As the boat passes marks **A** and **B** on each run, instruct the system to start and stop and finally OK to end calibration.



### **Use SOG as boat speed**

If boat speed is not available from a paddle wheel sensor, it is possible to use speed over ground from a GPS. SOG will be displayed as boat speed and used in the true wind calculations and the speed log.

## Wind

### ***MHU (Masthead unit) alignment***

This provides an off set calibration in degrees to compensate for any mechanical misalignment between the masthead unit and the center line of the vessel.

To check the masthead unit alignment error we recommend you use the following method which involves a sailing trial:

- Sail on a starboard tack on a close hauled course and record the wind angle, then repeat the process on a port tack
- Divide the difference between the two recorded numbers and enter this as the wind angle off set

If the starboard apparent wind angle is greater than the port angle, then divide the difference by 2 and enter this as a negative offset.

If the port angle is greater than the starboard then divide the difference by 2 and enter this as a positive offset.

Enter the offset it into the MHU Align calibration field.

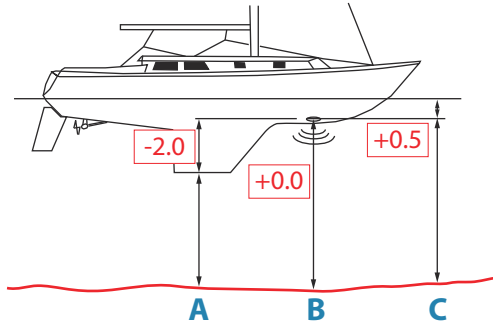
## Depth

### ***Depth offset***

All transducers measure water depth from the transducer to the bottom. As a result, water depth readings do not account for the distance from the transducer to the lowest point of the boat (for example; bottom of the keel, rudder, or propeller) in the water or from the transducer to the water surface.

- For depth below keel (**A**): Set the distance from transducer to the bottom of the keel as a negative value. For example, -2.0.
- For depth below transducer (**B**): no offset required.
- For depth below surface (waterline) (**C**): Set the distance from transducer to the surface as a positive value. For example, +0.5.





### Aft depth offset

This option allows the system to display two depth readings.

The Aft depth is calibrated in the same manner as the Depth offset.

- **Note:** Aft Depth is only available when a valid signal is received from a second and compatible NMEA 2000 or NMEA 0183 device.

### Heading

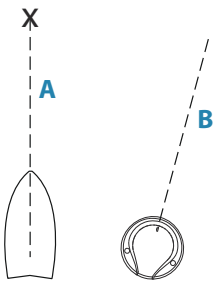
- **Note:** All magnetic compasses must be calibrated to ensure correct heading reference.

The calibration must be made on the active compass.

The calibration should be done in calm sea conditions and with minimal wind and current to obtain good results.

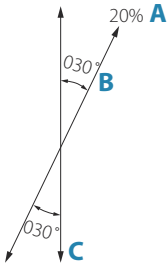
### Offset

The **Offset** option is used for compensating for any difference between the boat's center line (A) and the compass lubber line (B).



1. Find the bearing from the boat position to a visible object. Use a chart or a chart plotter
2. Steer the boat so that the center line of the boat is aligned with the bearing line pointing towards the object.
3. Change the offset parameter so that the bearing to the object and the compass readout becomes equal.

- **Note:** Make sure that both the compass heading and the bearing to the object have the same unit ( $^{\circ}$ M or  $^{\circ}$ T).



### User triggered calibration

→ **Note:** Before the calibration is started, make sure that there is enough open water around the vessel to make a full turn.

The **Calibrate** option is used for manually starting the heading calibration procedure.

During this calibration, the compass measures the magnitude and direction of the local magnetic field.

The illustration shows magnitude of local field in percentage of earth's magnetic field (**A**), direction of local field (**B**) with respect to the boat's centerline (**C**).

Follow the on-screen instruction, and use about 60-90 seconds to make a full circle. Keep turning until the system reports a pass.

- If the local magnetic field is stronger than the earth's magnetic field (the local field is reading more than 100%), the compass calibration will fail.
- If the local field is reading more than 30%, you should look for any interfering magnetic objects and remove them, or you should move the compass to a different location. The (local) field angle guides you to the local interfering magnetic object.

→ **Note:** In certain areas and at high latitudes the local magnetic interference becomes more significant, and heading errors exceeding  $\pm 3^\circ$  may have to be accepted.

### Automatic calibration

An auto calibration option is available for compasses that offers a fully automatic calibration procedure.

See more instructions in the documentation delivered with your compass.

### Magnetic variation

Defines how magnetic variation is handled by the system.

- Auto: Receives variation data from a network source
- Manual: Used for manually entering a value for the magnetic variation

## Use COG as heading

If heading data is not available from a compass sensor, it is possible to use COG from a GPS. COG will be used in the true wind calculations.

→ **Note:** The autopilot cannot be operated using COG as the heading source. COG cannot be calculated when stationary.

## Pitch and roll

If a suitable sensor is fitted, the system will monitor the inclination of the vessel. The offset value should be entered to adjust the readings so that while the vessel is stationary at the dock, the pitch and roll value reads 0.

## Environment

If a suitable sensor is fitted, the system will monitor the current sea/air temperature and barometric pressure.

The offset value to be entered should adjust the reading from the sensor to match a calibrated source.

## Rudder

Starts the automatic calibration of the rudder feedback. This procedure sets the correct relationship between the physical rudder movement and the rudder angle readout.

Follow the instructions on the display to perform the rudder feedback calibration procedure.

## Advanced

This option is used for manually applying an offset to the displayed data for third party sensors which cannot be calibrated through the AP44.

## Damping

If data appears erratic or too sensitive, damping may be applied to make the information appear more stable. With damping set to off, the data is presented in raw form with no damping applied.

Damping	
Heading	1 sec ▾
Apparent wind	4 sec ▾
True wind	4 sec ▾
Boat speed	4 sec ▾
SOG	1 sec ▾
COG	1 sec ▾
Attitude Roll	1 sec ▾

## Autopilot settings

The autopilot settings can be split between settings done by the user, and settings done during installation and commissioning of the autopilot system.

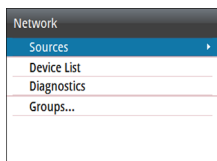
- User settings can be changed for various operational conditions or user preferences
- Installation settings are defined during commissioning of the autopilot system. No changes should later be done to these settings

For setup and commissioning, refer to the documentation for your autopilot computer.

→ **Note:** For Turn pattern settings, refer to "*Turn pattern steering*" on page 21.

## System settings

### Network



#### Sources

Data sources provide live data to the system.

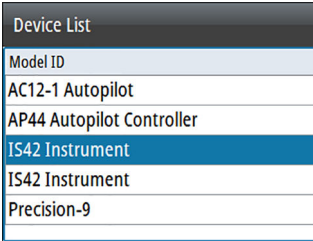
The data may originate from modules internal to the unit (for example internal GPS or sonar), or external modules connected to the NMEA 2000 or via NMEA 0183 if available on the unit.

When a device is connected to more than one source providing the same data, the user can choose the preferred source. Before commencing with source selection make sure all external devices and the NMEA 2000 backbone are connected and are turned on.

- Auto select: Looks for all sources connected to the device. If more than one source is available for each data type, selection is made from an internal priority list. This option is suitable for the majority of installations.
- Manual source selection: Manual selection is generally only required where there is more than one source for the same data, and the automatically selected source is not the one desired.

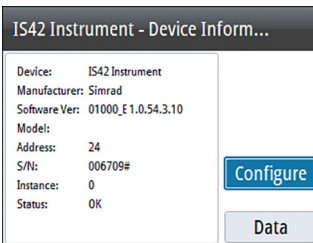
#### Device list

The Device list shows the devices that provide data. This may include a module inside the unit, or any external NMEA 2000 device.



Model ID
AC12-1 Autopilot
AP44 Autopilot Controller
IS42 Instrument
IS42 Instrument
Precision-9

Selecting a device in this list will bring up additional details and actions:



IS42 Instrument - Device Inform...	
Device:	IS42 Instrument
Manufacturer:	Simrad
Software Ver:	01000_E1.0.54.3.10
Model:	
Address:	24
S/N:	006709#
Instance:	0
Status:	OK

[Configure](#)

[Data](#)

All devices allow allocation of an instance number in the configure option. Set unique instance numbers on any identical devices on the network to allow for the unit to distinguish between them. The data option shows all data being output by the device. Some devices will show additional options specific to the device.

→ **Note:** Setting the instance number on a 3rd party product is typically not possible.

### **Diagnostics**

The NMEA 2000 tab on the diagnostics page can provide information useful for identifying an issue with the network.

→ **Note:** The following information may not always indicate an issue that can be simply resolved with minor adjustment to network layout or connected devices and their activity on the network. However, Rx and Tx errors are most likely indicating issues with the physical network, which may be resolved by

correcting termination, reducing backbone or drop lengths, or reducing the number of network nodes (devices).

#### **Bus state**

Indicates whether the bus is powered, but not necessarily connected to any data sources. However, if bus shows as off, but power is present along with an increasing error count, it is possible that termination or cable topology is incorrect.

#### **Rx Overflows**

The unit received too many messages for its buffer before the application could read them.

#### **Rx Overruns**

The unit contained too many messages for its buffer before the driver could read them.

#### **Rx/Tx Errors**

These two numbers increase when there are error messages, and decrease when messages are received successfully. These (unlike the other values) are not a cumulative count. Under normal operation these should be at 0. Values around 96 upwards indicate a heavily error prone network. If these numbers go too high for a given device, it will automatically drop off the bus.

#### **Rx/Tx Messages**

Shows actual traffic in and out of device.

#### **Bus Load**

A high value here indicates network is near full capacity. Some devices automatically adjust rate of transmission, if network traffic is heavy.

#### **Fast Packet Errors**

Cumulative counter of any fast packet error. This could be a missed frame, or a frame out of sequence etc. NMEA 2000 PGNs are made of up to 32 frames. The entire message will be discarded when a frame is missed.

→ **Note:** Rx and Tx Errors often indicate an issue with the physical network, which may be resolved by correcting termination,

reducing backbone or drop lengths, or reducing the number of network nodes (devices).

### **Network groups**

The Network Group function is used to control parameter settings, either globally or in groups of units. The function is used on larger vessels where several units are connected to the network. By assigning several units to the same group, a parameter update on one unit will have the same effect on the rest of the group members.

### **Units**

Provides setup of units of measure used on various data types.

### **Decimal places**

Defines number of decimals used for speed and sea temperature.

### **Key beeps**

Controls the loudness of the beep sound when a key is pressed.

### **Language**

Controls the language used on this unit.

### **Time**

Controls the local time zone offset, and the format of the time and date.

### **Display setup**

Displays the Display setup dialog.

The following options are available:

- Backlight level: Adjusts the backlight level from Min (10%) to Max (100%) in 10% increments
  - When the Backlight level field is active, subsequent presses on the backlight key adjusts backlight level in decrements of 30%
- Display group: Defines which network group the unit belongs to
- Night mode: Activates/deactivates the night mode color palette
- Night mode color: Sets the night mode color palette

- Invert day color: Changes the background color for the pages from default black to white
- Sleep: Turns the backlight for screen and keys off to save power

## Files

File management system. Used to browse the contents of the unit's internal memory and the content of a device plugged into the unit's USB port.



## Simulate

Runs the display with simulated data. Use the simulator to become familiar with your unit before using it on the water.

When activated, the simulator mode is indicated on the display.

## Restore defaults

Allows you to select which settings are to be restored to their original factory settings.

## Global reset

Resets the source selection on all displays connected to the network.

## About

Displays copyright information, software version, and technical information for this unit.



# 7

## Maintenance

---

### Preventive maintenance

The unit does not contain any field serviceable components. Therefore, the operator is required to perform only a very limited amount of preventative maintenance.

It is recommended that you always fit the supplied protective sun cover when the unit is not in use.

### Cleaning the display unit

To clean the screen:

- A micro-fiber or a soft cotton cloth should be used to clean the screen. Use plenty of water to dissolve and take away salt remains. Crystallized salt, sand, dirt, etc. can scratch the protective coating if using a damp cloth. Use a light fresh water spray then wipe the unit dry with a micro-fiber or a soft cotton cloth. Do not apply pressure with the cloth.

To clean the housing:

- Use warm water with a dash of liquid dish soap or detergent.

Avoid using abrasive cleaning products or products containing solvents (acetone, mineral turpentine, etc.), acid, ammonia, or alcohol as they can damage the display and plastic housing.

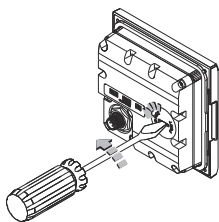
Do not use a jet or high pressure wash. Do not run your unit through a car wash.

### Checking the connectors

The connectors should be checked by visual inspection only.

Push the connector plugs into the connector. If the connector plugs are equipped with a lock, ensure that it is in the correct position.

## Software update



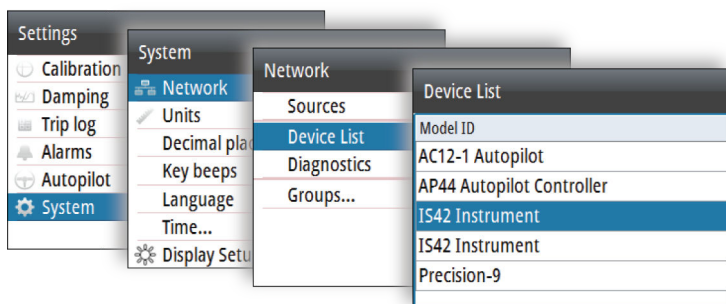
The AP44 includes a USB port on the back of the units. You use this port for software updates.

You can update the software for the AP44 unit itself and for NMEA 2000 sensors connected to the network from the AP44.

You can check the unit's software version from the About dialog.

About	
Product	AP44
Application	1.0.54.3.10
Platform	21.0.34-g1fe7472
Serial number	011881#
Language pack	Standard
Up time	1:09:19 hrs
Copyright	2016 Navico

The software version for connected NMEA 2000 sensors is available in the Device list.



The latest software is available for download from our website: [www.simrad-yachting.com](http://www.simrad-yachting.com).

### Software update for the unit

1. Download the latest software from our website: [www.simrad-yachting.com](http://www.simrad-yachting.com), and save it to a USB device
2. Insert the USB device to the AP44 unit, and restart the AP44 unit
  - The upgrade will now start automatically the upgrade procedure for all units

3. Remove the USB device when the update is completed.

**⚠ Warning:** Do not remove the USB device until the update is completed. Removing the USB device before the update is completed may damage the unit.

### **Software update for remote devices**

1. Download the latest software from our website: [www.simrad-yachting.com](http://www.simrad-yachting.com), and save it to a USB device
2. Insert the USB device to the AP44 unit
3. Start the File explorer, and select the update file on the USB device
4. Start the update from the file details dialog
5. Remove the USB device when the update is completed.

# 8

## Menu tree

The system includes a Settings menu, accessed by pressing the **MENU** key. The Settings menu gives access to settings for the sensors, the vessel, the autopilot computer and for the system.

Level 1	Level 2
<b>Calibration</b>	Boat speed...
	Wind...
	Depth...
	Heading...
	Roll/Pitch...
	Environment...
	Rudder...
	Advanced...
<b>Damping</b>	Heading
	Apparent wind
	True wind
	Boat speed
	SOG
	COG
	Attitude Roll
	Attitude Pitch
<b>Trip log</b>	Tide
	Trip 1...
	Trip 2...
<b>Alarms</b>	Log...
	Alarm history...
	Alarm settings...
	Alarms enabled
	Siren Enabled

Level 1	Level 2
<b>Autopilot</b> Available options depend on connected autopilot computer.	Steering
	Sailing
	Turn patterns
	Installation
<b>System</b>	Network
	Units
	Decimal places
	Key beeps
	Language
	Time
	Display Setup...
	Digital gauges
	Files
	Simulate
	Restore defaults...
	Global reset...
	About

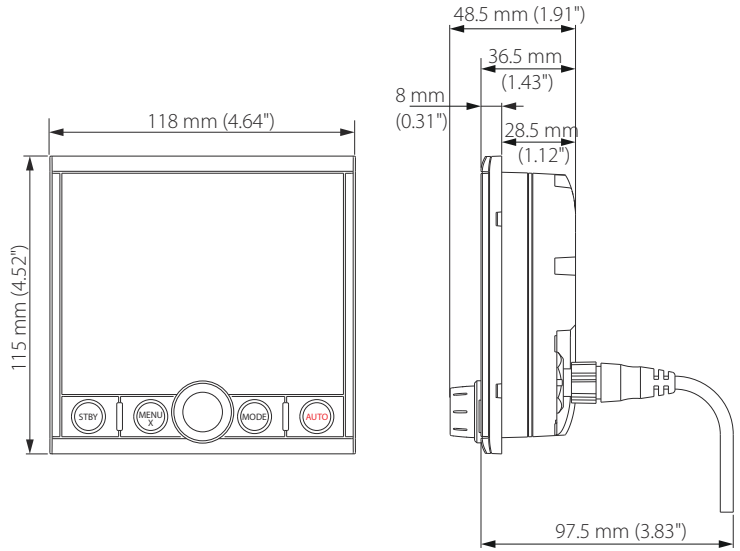
# 9

## Technical specifications

<b>Dimensions</b>	Refer to " <i>Dimensional drawing</i> " on page 47
<b>Weight</b>	0.32 kg (0.7 lbs)
<b>Power consumption(@ 13.5 V)</b>	
Backlight OFF	1.35 W (100 mA)
Backlight MAX	2.16 W (160 mA)
<b>Network load</b>	4 LEN
<b>Color</b>	Black
<b>Display</b>	
Size	4.1" (diagonal). 4:3 Aspect ratio
Type	Transmissive TFT-LCD. White LED backlight
Resolution	320 x 240 pixels
Illumination	White for day mode. Red, green, blue or white for night mode
<b>Environmental protection</b>	
Waterproof rating	IPx7
Humidity	100% RH
<b>Temperature</b>	
Operating	-25° to +65°C (-13°F to +149 °F)
Storage	-40° to +85°C (-40°F to +185 °F)

# 10

## Dimensional drawing



# 11

## Terms and abbreviations

This list shows terms and abbreviations used in the pages and in dialogs in the AP44 system.

AIR TEMP	Air temperature
AIS	Automatic Identification System
AVG SPD	Average speed
AWA	Apparent wind angle
AWS	Apparent wind speed
BSPD	Boat speed
BTW	Bearing to waypoint
BWW	Bearing Waypoint To Waypoint
COG	Course Over Ground
CTS	Course To Steer
DGPS	Differential Gps
DTW	Distance to next waypoint
DSC	Digital Selective Calling
EPFS	Electronic Position Fixing System
EPIRB	Emergency Position Indicating Radio Beacon
ETA	Estimated Time Of Arrival
ETW	Estimated time of arrival to next waypoint
GLONASS	Global Orbiting Navigation Satellite System
GMDSS	Global Maritime Distress And Safety System
GNSS	Global Navigation Satellite System
GPS	Global Positioning System
HDG	Heading
Km	Kilometer
KN	Knots
LL DIST	Layline distance
LL TIME	Layline time
m	Meters



MAX SPD	Maximum speed
MIN	Minimum
MOB	Man Over Board
NM	Nautical Mile
OPP HDG	Heading on opposite tack
POS	Position
RM	Relative Motion
RNG	Range
ROT	Rate Of Turn
RTE	Route
SAR	Search And Rescue
SOG	Speed Over Ground
SPD	Speed
STBD	Starboard
STW	Speed Through Water
TCPA	Time To Closest Point Of Approach
TGT	Target
TIME LOC	Local time
TM	True Motion
TRK	Track
TRK CRS	Track course to next waypoint
TWA	True wind angle
TWD	True wind direction
TWS	True wind speed
WOL	Wheel Over Line
WOP	Wheel Over Point
WPT	Waypoint name
WPT BRG	Bearing to waypoint
WPT DIST	Distance to waypoint
XTE	Cross track error

# 12

## Supported data

---

→ **Note:** NMEA 0183 and NMEA 2000 data output requires the connection of relevant sensors.

### NMEA 2000 PGN (transmit)

59904	ISO Request
60928	ISO Address Claim
126208	ISO Command Group Function
126996	Product Info
127258	Magnetic Variation

### NMEA 2000 PGN (receive)

59392	ISO Acknowledgement
59904	ISO Request
60928	ISO Address Claim
126208	ISO Command Group Function
126992	System Time
126996	Product Info
127237	Heading/Track Control
127245	Rudder
127250	Vessel Heading
127251	Rate of Turn
127257	Attitude
127258	Magnetic Variation
128259	Speed, Water referenced
128267	Water Depth
128275	Distance Log
129025	Position, Rapid Update

129026	COG & SOG, Rapid Update
129029	GNSS Position Data
129033	Time & Date
129283	Cross Track Error
129284	Navigation Data
129539	GNSS DOPs
129283	Cross Track Error
129284	Navigation Data
130074	Route and WP Service - WP List - WP Name & Position
130306	Wind Data
130576	Small Craft Status
130577	Direction Data





**SIMRAD®**

