

**RBX™****RBX-B40 Hub Kit**

## Rubex Interchangeable Hub System Installation Instructions

**WARNING:**

*Always shift engine into the neutral position and turn ignition off. Remove spark plug leads or ignition coil lead before servicing the propeller.*

It is very important to refer to your Engine's Owner Manual for important safety precautions when installing the propeller. Use the original propeller hardware thrust washer, spacer, locking tab, nut, and cotter pin depending on engine/drive manufacturer. This is a Suzuki installation instruction.

- 1) Put the OEM Thrust Washer & Thrust Washer Adapter(#81188420) on propeller shaft just as it came off. The taper on the OEM Thrust Washer should mate properly with the taper on the propeller shaft.
- 2) Put the Rubex RBX Hub (#731462030) into the front of the propeller's hub cavity. The Rubex RBX Hub (#731462030) should slide  $\frac{3}{4}$  or more into propeller hub cavity or it may be backwards.
- 3) Press or tap gently the Rubex RBX Hub (#731462030) so the propeller hub is flush with the hub cavity.
- 4) Grease the propeller shaft.
- 5) Slide the propeller assembly onto the propeller shaft.
- 6) Install Aft Spacer (#81058420) . Consult your engine/drive manual.
- 7) Install the Washer if required. Consult your engine/drive manual.
- 8) Install the shaft nut. Consult your engine/drive manual for proper torque.
- 9) Install the cotter pin. Consult your engine/drive manual for proper torque.

**Picture may not be exact to your application.  
Please consult your owner's manual.**

OEM Thrust Washer  
(Supplied with engine)



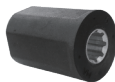
Thrust Washer Adapter  
(#81188420)  
included in kit



RUBEX Propeller

RBX Hub  
(#731462030)  
included in kit

Aft Spacer  
(#81058420)  
included in kit



Washer  
(Original Part)  
not included in kit



Cotter Pin  
(Original Part)  
not included in kit



Nut  
(Original Part)  
not included in kit

**RBX-B40 APPLICATIONS:**

Suzuki is a registered trademark of the Suzuki Motor Corp. Evinrude/Johnson/BRP are registered trademarks of the Bombardier Recreational Products Inc.

**Suzuki 3" Gearcase (10 Tooth Spline)**

※ DT 20 83-88, DF 25A 2014 & Newer, DT 25 & 25C 83-00, DF 25 (Includes V-Twin) 2000 & Newer,  
DF 25R 2010 & Newer, DT 30 & 30C 83-97, DF 30 00-07, DF 30A 2014 & Newer

**Evinrude/Johnson/BRP 3" Gearcase (10 Tooth Spline)**

※ Johnson 25-30 HP (4-Stroke) 04-07; JAPAN ORIGIN SUZUKI