

southco	REV	DATE	DRAWN/CHKD	DESCRIPTION	ASSEMBLY PART NUMBER	MATERIAL AND FINISH
	A	28MAY99	RJB	PRN: M1-96	M1-2A-13-XX (NON-LOCKING)	SEE TABLE 1
	B	20DEC98	RJB	PRN: M1-102	M1-2A-23-5 (LOCKING)	SEE TABLE 2
	C	06JAN2003	VN/ZA/JH	PRN: P2002-0934		
D	11MAY2007	MDY	PRN: P2007-0855			

M1-2A FIXED GRIP ASSEMBLY
 DRAWING NUMBER: J-M1-2A-1-3
 SCALE: 1:1
 DATE: 15DEC98
 THIRD ANGLE PROJECTION
 MILLIMETERS
 ALL DIMENSIONS WITHOUT TOLERANCES ARE FOR REFERENCE ONLY.
 A3 PAPER SIZE

NOTES FOR NON-LOCKING ASSEMBLIES ONLY:

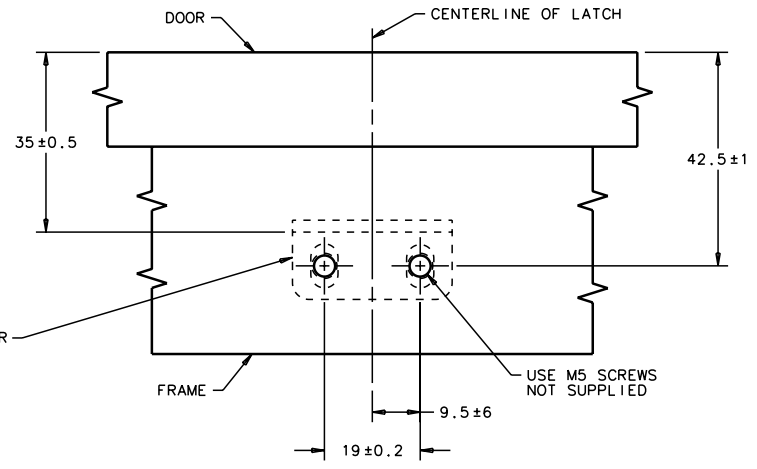
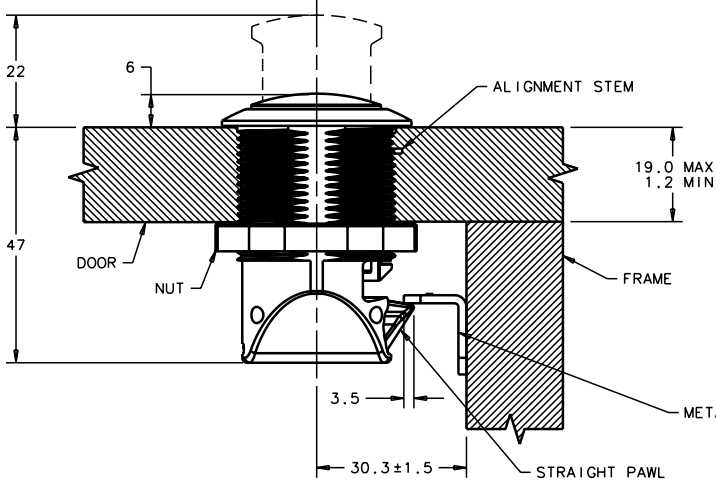
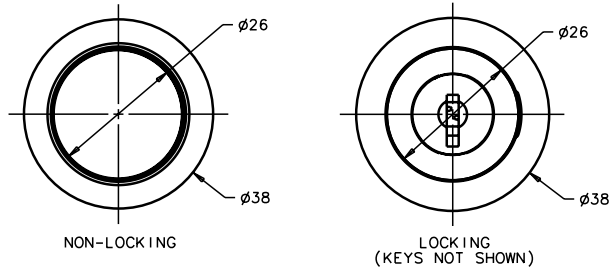
- A.**
- | PART NUMBER | FINISH/COLOR | KNOB MATERIAL |
|-------------|--------------------------------------|---------------|
| M1-2A-13-1 | CHROME FINISH HOUSING AND KNOB | ABS |
| M1-2A-13-2 | MATTE CHROME FINISH HOUSING AND KNOB | ABS |
| M1-2A-13-3 | BLACK HOUSING AND KNOB | PC/ABS BLEND |
| M1-2A-13-4 | GOLD HOUSING AND KNOB | ABS |
| M1-2A-13-5 | CHROME HOUSING/GOLD KNOB | ABS |
| M1-2A-13-8 | GOLD HOUSING/CHROME KNOB | ABS |
| M1-2A-13-10 | RED HOUSING AND KNOB | PC/ABS BLEND |
- B.** INTERNAL CYLINDER IS WHITE FOR PART NUMBERS M1-2A-13-1, M1-2A-13-2, M1-2A-13-8, M1-2A-13-9 AND M1-2A-13-10
 INTERNAL CYLINDER IS BLACK FOR PART NUMBERS M1-2A-13-5 AND M1-2A-13-14

TABLE 1: NON-LOCKING ASSEMBLY

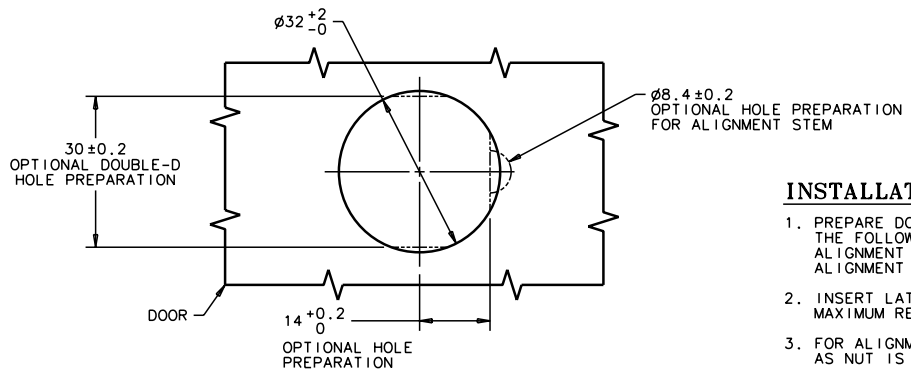
COMPONENTS	MATERIAL	FINISH
HOUSING	PC/ABS BLEND	SEE NOTE A
KNOB	SEE NOTE A	SEE NOTE A
INTERNAL CYLINDER	ACETAL	SEE NOTE B
PAWL	GLASS FILLED NYLON	BLACK
NUT	GLASS FILLED NYLON	BLACK
SPRING - PAWL	304 STAINLESS STEEL	PASSIVATED
SPRING - KNOB	304 STAINLESS STEEL	PASSIVATED
KEEPER	304 STAINLESS STEEL	PASSIVATED

TABLE 2: LOCKING ASSEMBLY

COMPONENTS	MATERIAL	FINISH
HOUSING	PC/ABS BLEND	BLACK
KNOB	PC/ABS BLEND	BLACK
INTERNAL CYLINDER	ACETAL	BLACK
PAWL	GLASS FILLED NYLON	BLACK
NUT	GLASS FILLED NYLON	BLACK
LOCKPLUG	GLASS FILLED NYLON	BLACK
LOCK MEMBER	GLASS FILLED ACETAL	BLACK
SPRING - PAWL	304 STAINLESS STEEL	PASSIVATED
SPRING - KNOB	304 STAINLESS STEEL	PASSIVATED
KEEPER	304 STAINLESS STEEL	PASSIVATED
2 KEYS (NOT SHOWN)	BRASS, NICKEL PLATED	



DOOR/FRAME PREPARATION - FRAME DETAIL



DOOR/FRAME PREPARATION - HOLE DETAIL

INSTALLATION INSTRUCTIONS:

- PREPARE DOOR AND FRAME AS SHOWN. THE FOLLOWING OPTIONAL PANEL PREPARATIONS MAY BE USED TO ENSURE LATCH ANTI-ROTATION: ALIGNMENT STEM HOLE FOR PANELS THICKER THAN 6.4 OR A DOUBLE-D* HOLE. ALIGNMENT STEM FOLDS AWAY IF ROUND HOLE PREPARATION IS USED.
- INSERT LATCH THROUGH HOLE AND TIGHTEN NUT (38 ACROSS FLATS). MAXIMUM RECOMMENDED TIGHTENING TORQUE IS 4.2 N·m.
- FOR ALIGNMENT STEM USAGE, PUSH ALIGNMENT STEM INTO SEMICIRCULAR HOLE AND HOLD IN PLACE AS NUT IS TIGHTENED.
- INSTALL KEEPER, IF NECESSARY. ADJUST KEEPER TO ELIMINATE ANY GAP BETWEEN DOOR AND FRAME.