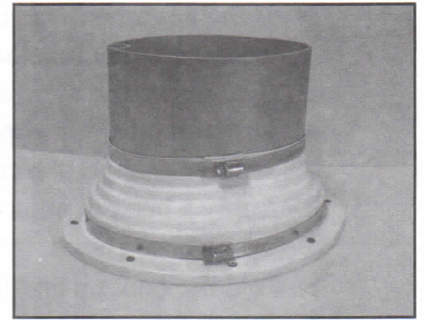




43985 Commerce Ave.
Hollywood, MD 20636
(301) 373-2372
Fax: (301) 373-2734



UNIVERSAL MAST BOOT INSTRUCTIONS

PLEASE READ ALL INSTRUCTIONS BEFORE ATTEMPTING TO INSTALL YOUR UNIVERSAL MAST BOOT.

SSI will not replace mast boots which have been incorrectly ordered, cut or glued.

1. Check the circumference chart (over) to make sure that the mast boot you have purchased will fit requirements for your mast and collar. If the mast is stepped, the circumference of the boot at the bottom must be at least 1" larger than the collar to allow for a glue overlap.
2. **IF MAST IS PULLED FROM BOAT**
 - A. Using a good pair of scissors cut the cone shaped off the top of the boot. We recommend cutting one step at a time until the top of the boot will slide up the mast. Cut bottom of boot one level below the circumference that would provide a snug fit around the collar. This "extra" level at the boot bottom may be necessary for clamping the boot to some collars. Trim any excess boot material below stainless band after the boot is sealed and clamped to collar. The boot can be sealed to the mast with silicone or other sealants. Apply a bead of sealant between the mast and boot. Install the stainless steel hose clamps taking care that the boot is not pulled out of shape by the tightening of the bands.
3. **IF THE MAST IS ALREADY STEPPED**
 - A. Using a good pair of scissors, cut the cone shaped top of boot off and slit the boot up the side. Wrap the cut boot around the mast. At the top, you need to cut off a step at a time until the boot has got a 1" to 1 ½" overlap. Wrap the boot around the mast again and evaluate how the boot is fitting the collar. (Image 1).
 - B. As you did on the top steps, you can cut off one step at a time on the bottom. We would suggest that you leave an extra step of material on the bottom until you are sure that it will fit and not be too short. You can always cut off excess with a razor knife at the end of the installation.
 - C. At this point you will be able to wrap the boot around the mast and the collar and have a feel for how it will fit and make the transition between the mast and collar. We recommend dry fitting with both the top and bottom stainless bands in place. If the overlap is uneven, too long or angled, cut it straight and vertical. You can mark the overlap area with a pencil or dots from a pen so you can see where to apply glue. (Image 2). Remove the bands or get them up out of your way to proceed to the gluing step.
 - D. The next step is to begin the gluing operation, starting with the top overlap around the mast.
 1. Poke a hole in the top of the adhesive tube using the point inside the cap. **For an extra comfort level, you can practice gluing a couple of the scraps of vinyl together.** NOTE: THIS ADHESIVE IS VERY FLAMMABLE!! IT MAY DISSOLVE PAINT AND OTHER SURFACES.
 2. Apply a small bead of adhesive to the overlap area at the top of the boot only. (about 1 sq. inch) Immediately bring this glue area in contact with the other surface. Both surfaces should have an even film of glue on the areas that will be in contact with each other. Allow to dry for 20-30 sec. Bring these surfaces together again and install over the collar. You may want to use a top hose clamp to hold secure in place. This is a good time to review what the overall fit will be when you finish gluing. (Image 3).

3. If the alignment and fit of the rest of the boot looks good, apply glue to the remainder of the vertical seam and glue together as you did in the collar overlap area. Leave the boot sit for a few minutes and then check the bond along the whole overlap area. Check that the seam looks neat and watertight. If any of it does not appear to be sealed, you can carefully apply more glue as needed and hold together with your hand until it stays tight. (Image 4).
- E. Apply a bead of silicone sealer around the mast in the area the boot will cover and install the upper hose clamp.
1. Fold the boot up and then apply silicone sealer around the collar if desired and install the lower stainless hose clamp.
 2. You can use a sharp knife to trim the excess boot at the top or the bottom if needed and cleanup excess silicone sealer. Adhesive can be cleaned up with acetone or methylethyl ketone (MEK) Use with caution around paint or other plastic surfaces.

PLEASE NOTE: The vinyl adhesive provided has a limited 'shelf-life'. If the supply enclosed is not workable, please notify your dealer/vendor for replacement. If this is not possible, contact SSI by phone or email at sales@ssicustomplastics.com

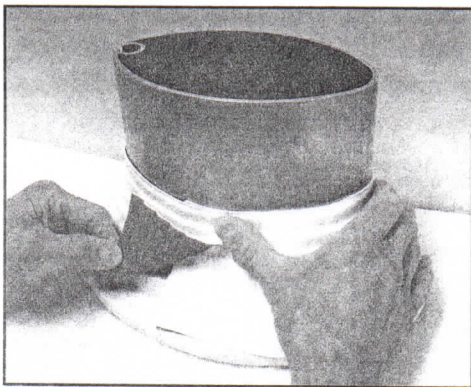


Image 1

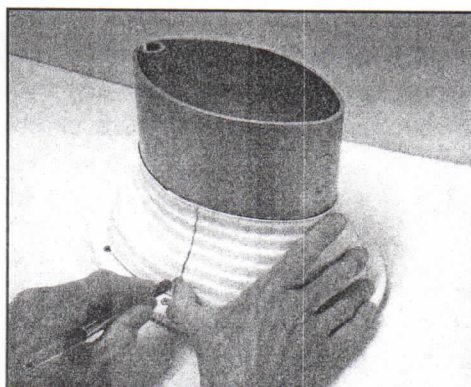


Image 2

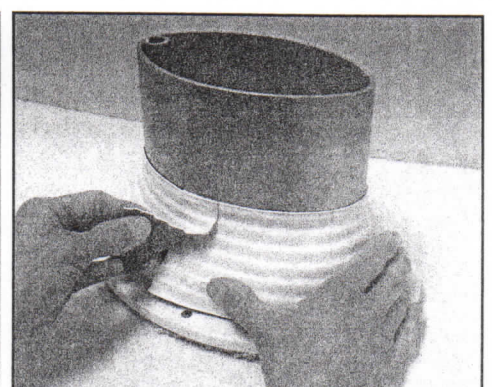


Image 3

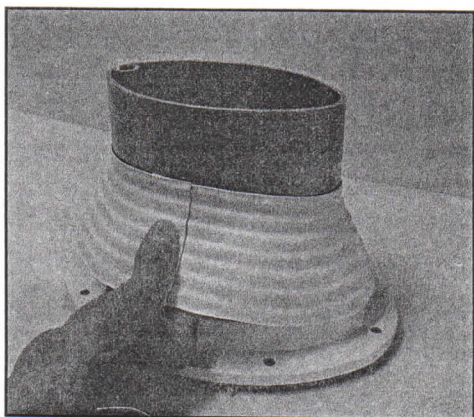


Image 4

			Circumference of Steps		
			No. 910	No. 912	No. 914
			17.5	23.5	30.0
			19.0	25.0	31.5
			20.5	26.5	33.0
			22.0	28.0	34.5
			23.5	29.5	36.0
			26.0	31.0	37.5
			26.5	32.5	39.0
			28.0	34.0	40.5
			29.5	35.5	42.0
			31.0	37.0	43.5
			32.5	38.5	45.0

Visit us on the web at <http://www.ssicustomplastics.com>