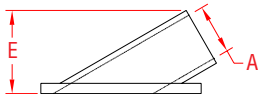
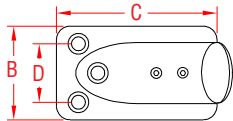


RECTANGULAR BASE

316 STAINLESS STEEL



ITEM

A

B

C

D

E

FAST.

WT

(size)

(lb)

30 DEGREE ANGLE

S3651-0300

7/8"

1.70"

3.04"

1.05"

1.49"

#10 Screws

0.38

S3651-0301

1"

1.85"

3.22"

1.12"

1.56"

1/4" Screws

0.48

NOTE:

SOLD INDIVIDUALLY, WITH SET SCREWS. USE 1/8" ALLEN KEY.

**REFERENCE "FASTENER MATCHING CHART" (PAGE 157)
FOR COMPATIBLE FASTENERS.**