

Instruction Manual for Tachometer w/ Oil Lamp

Applicable Models

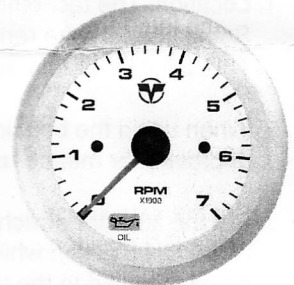
MFS 9.9/15,20, MFS 25/30, MFS 40/50/60, MFS 75/90/100/115/140

Components

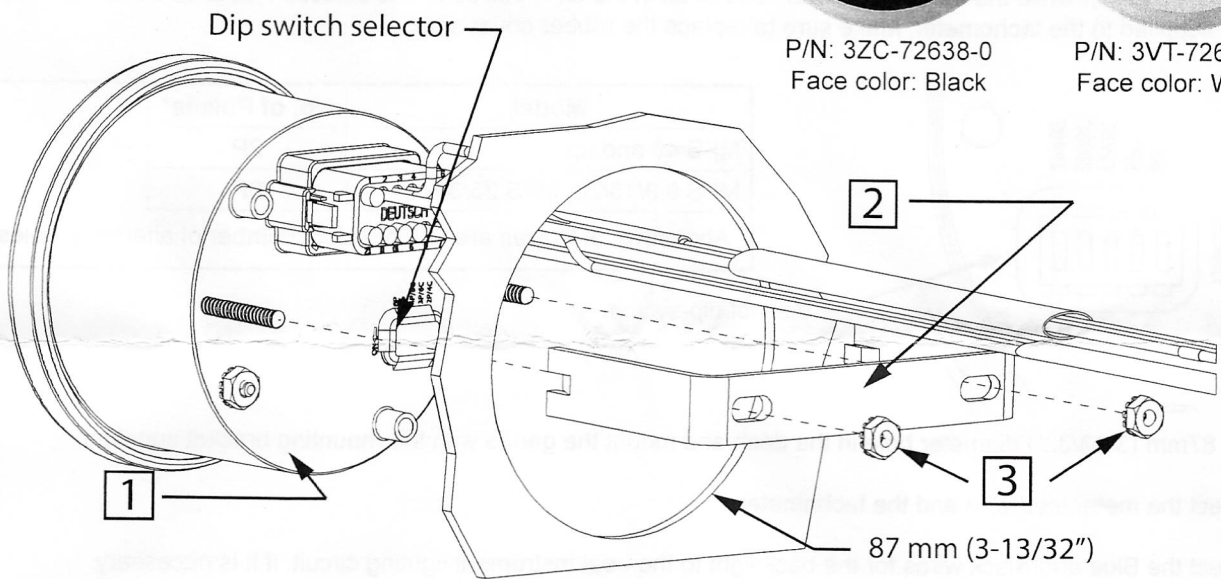
No.	Description	Qty
1	Tachometer w/ Oil Lamp	1
2	Mounting Bracket	1
3	Nuts	2



P/N: 3ZC-72638-0
Face color: Black



P/N: 3VT-72638-0
Face color: White



Light Functions

Oil Light indicates an abnormality when the Oil Light comes on the MFS 9.9-140 models.

General Safety Information

Please read this manual and follow its instructions carefully. The following safety alert symbols may be used in this manual:

 **CAUTION**

Failure to observe could result in personal injury or property damage.

Note

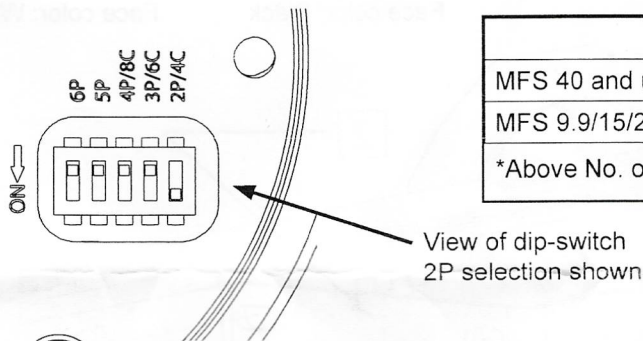
Indicates special information to make maintenance easier or instructions clear.



⚠ CAUTION

Disconnect battery during installation.
Tighten nuts on back of mounting bracket slightly more than you can tighten with your fingers. 0.64N-m (5.7in-lb, 6.5kg-cm) is sufficient.
Over tightening may result in damage to the instrument and may void your warranty.

1. Location: The tachometer should be located at least 450mm (18") from a magnetic compass.
Some interference (erratic operation) may be noticed on the tachometer during radio transmissions.
This will neither damage the tachometer nor affect accuracy when not transmitting.
2. When using the boat instrument light switch, be certain to use stranded, insulated, wire not lighter than 18 AWG that is approved for marine use.
3. Set the selector switches to specified pulse selection on the back of the meter. The desired pulse selection needs to be in the ON position while the other selections need to be in the OFF position. This selection must be done with no power being supplied to the tachometer. Make sure to replace the rubber cover after.



Model	No. of Pulses*
MFS 40 and up	2P
MFS 9.9/15/20, MFS 25/30	6P

*Above No. of Pulses are half of actual number of alternator poles.

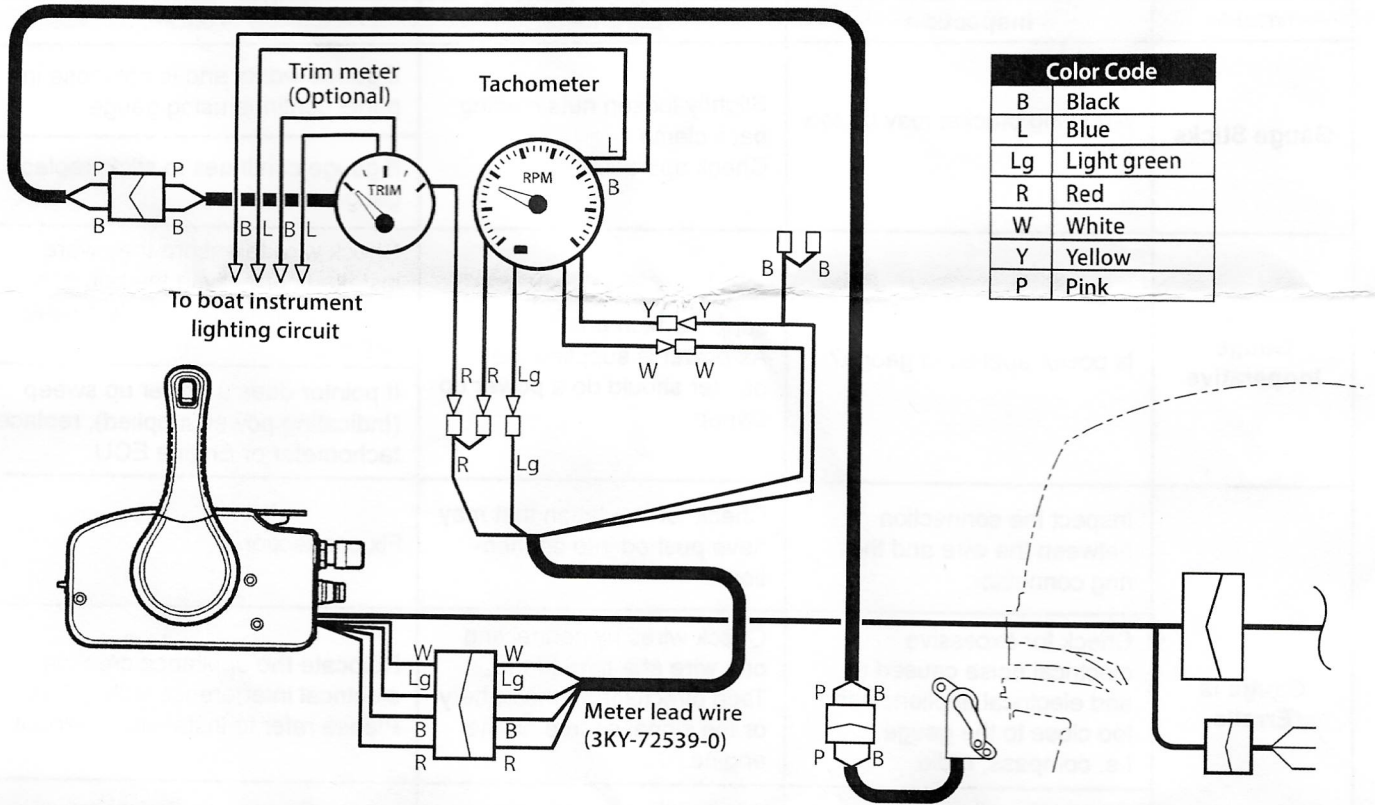
4. Cut a 87mm (3-13/32") diameter hole in the dash and mount the gauge with the mounting bracket supplied.
5. Connect the meter lead wire and the tachometer.
6. Connect the Blue and Black wires for the back light to the boat instrument lighting circuit, if it is necessary.
7. Reconnect the battery.



Wiring Diagram

3ZC-11305-0

MFS models



Trouble	Inspection	Diagnosis	Action
Gauge Sticks	Mounting bracket may be too tight.	Slightly loosen nuts holding back clamp. Check operation.	If gauge works and is not loose in panel continue using gauge.
			If gauge continues to stick, replace gauge.
Gauge Inoperative	Is power applied to gauge?	Switch the instrument power supply switch on and off. As power is supplied the pointer should do a power up sweep.	Check wire to ensure they were installed correctly in the harness plug and power is actually supplied to gauge
			If pointer does a power up sweep (Indicating power supplied), replace tachometer or Engine ECU.
Gauge is Erratic	Inspect the connection between the wire and the ring connector.	Check for insulation that may have pushed into connection.	Fix connection.
	Check for excessive electrical noise caused by and electrical appliance set too close to the gauge. I.e. compass, radio.	Check wires by connecting one wire at a time to the Tach directly from the battery or the signal source on the engine.	Relocate the appliance creating electrical interference with gauge. Please refer to installation manual.
	A high or low RPM reading may indicate an incorrect pole position.	Check the dip switch selector switch on the back of the tachometer.	Set the dip switch selection to 2P (MFS 40 and up, 6P (MFS 9.9-30)