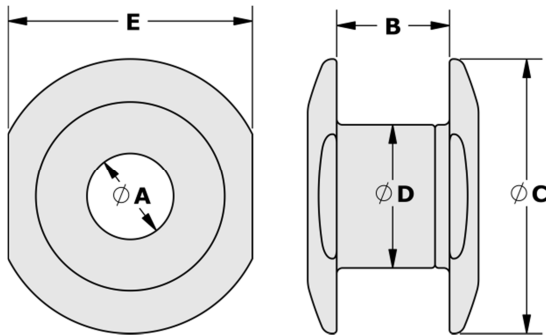


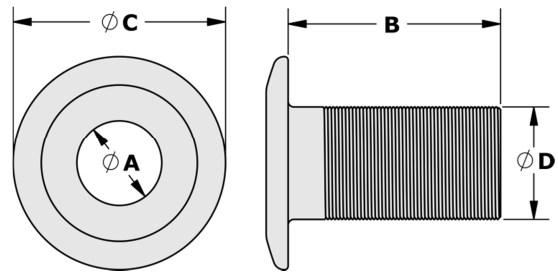
# ROPE BUSHINGS



Tylaska's new line of Rope Bushings provide a durable, high quality, and low friction solution for passing lines and sheets through decks, bulkheads, and other surfaces. Just like Tylaska's popular line of low friction rings, Tylaska Rope Bushings are precision machined from 6061 aluminum and hard coat anodized to military type III specifications, maximizing durability and wear resistance. A large smooth radius at the mouth of the bushing allows for a tight bend radius in the rope passing through the bushing. Available in a single piece cut-to-length variation as well as a threaded two-piece assembly that screws together.



Two Piece Adjustable Thickness Bushing



Single Piece Cut-to-Length Bushing

Part No.	Description	Dimensions (in. [mm])					Weight (oz [g])
		A	B	C	D	E	
TY2808	RB8-S Single Rope Bushing	0.32 [8]	1.18 [30]	1.02 [26]	0.47 [12]	-	0.27 [7.6]
TY2810	RB10-S Single Rope Bushing	0.39 [10]	1.18 [30]	1.10 [28]	0.55 [14]	-	0.31 [8.9]
TY2812	RB12-S Single Rope Bushing	0.47 [12]	1.18 [30]	1.18 [30]	0.63 [16]	-	0.36 [10.2]
TY2814	RB14-S Single Rope Bushing	0.55 [14]	1.18 [30]	1.25 [32]	0.71 [18]	-	0.41 [11.6]
TY2810-12	RB10 Rope Bushing 10-12mm Deck Thickness	0.39 [10]	0.39-0.47 [10-12]	1.25 [32]	0.63 [16]	1.10 [28]	0.39 [11.0]
TY2810-16	RB10 Rope Bushing 12-16mm Deck Thickness	0.39 [10]	0.47-0.63 [12-16]	1.25 [32]	0.63 [16]	1.10 [28]	0.41 [11.6]
TY2810-22	RB10 Rope Bushing 16-22mm Deck Thickness	0.39 [10]	0.63-0.87 [16-22]	1.25 [32]	0.63 [16]	1.10 [28]	0.45 [12.8]
TY2810-30	RB10 Rope Bushing 22-30mm Deck Thickness	0.39 [10]	0.87-1.18 [22-30]	1.25 [32]	0.63 [16]	1.10 [28]	0.52 [14.7]
TY2810-50	RB10 Rope Bushing 30-50mm Deck Thickness	0.39 [10]	1.18-1.97 [30-50]	1.25 [32]	0.63 [16]	1.10 [28]	0.60 [17.0]
TY2812-12	RB12 Rope Bushing 10-12mm Deck Thickness	0.47 [12]	0.39-0.47 [10-12]	1.50 [38]	0.78 [20]	1.33 [34]	0.70 [19.8]
TY2812-16	RB12 Rope Bushing 12-16mm Deck Thickness	0.47 [12]	0.47-0.63 [12-16]	1.50 [38]	0.78 [20]	1.33 [34]	0.73 [20.8]
TY2812-22	RB12 Rope Bushing 16-22mm Deck Thickness	0.47 [12]	0.63-0.87 [16-22]	1.50 [38]	0.78 [20]	1.33 [34]	0.80 [22.8]
TY2812-30	RB12 Rope Bushing 22-30mm Deck Thickness	0.47 [12]	0.87-1.18 [22-30]	1.50 [38]	0.78 [20]	1.33 [34]	0.91 [25.8]
TY2812-50	RB12 Rope Bushing 30-50mm Deck Thickness	0.47 [12]	1.18-1.97 [30-50]	1.50 [38]	0.78 [20]	1.33 [34]	1.05 [29.9]
TY2816-12	RB16 Rope Bushing 10-12mm Deck Thickness	0.63 [16]	0.39-0.47 [10-12]	1.86 [47]	0.94 [24]	1.73 [44]	1.19 [33.8]
TY2816-16	RB16 Rope Bushing 12-16mm Deck Thickness	0.63 [16]	0.47-0.63 [12-16]	1.86 [47]	0.94 [24]	1.73 [44]	1.24 [35.0]
TY2816-22	RB16 Rope Bushing 16-22mm Deck Thickness	0.63 [16]	0.63-0.87 [16-22]	1.86 [47]	0.94 [24]	1.73 [44]	1.32 [37.6]
TY2816-30	RB16 Rope Bushing 22-30mm Deck Thickness	0.63 [16]	0.87-1.18 [22-30]	1.86 [47]	0.94 [24]	1.73 [44]	1.46 [41.4]
TY2816-50	RB16 Rope Bushing 30-50mm Deck Thickness	0.63 [16]	1.18-1.97 [30-50]	1.86 [47]	0.94 [24]	1.73 [44]	1.64 [46.4]