

# Weaver Arc Worksheet

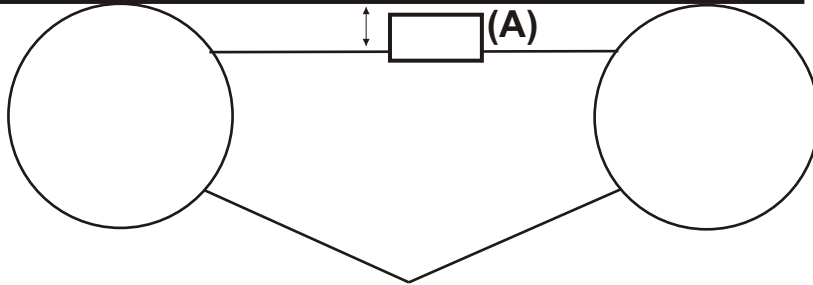
Dinghy

Make: \_\_\_\_\_ Model: \_\_\_\_\_ Year: \_\_\_\_\_

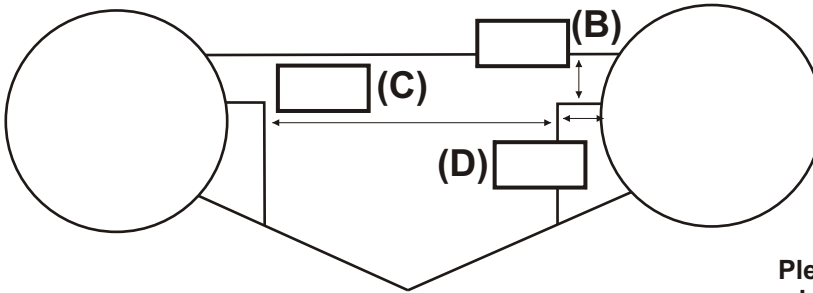
Length: \_\_\_\_\_ Tube Diameter: \_\_\_\_\_

Board or Ruler

**Please Fill in the Boxes**



A - Measure the distance from the top of the tubes (bottom of board or ruler) to the top of transom.

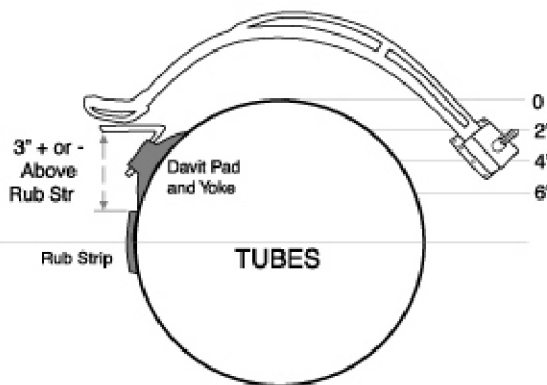


**Looking inside transom - Only fill out if you have braces from the floor to the transom of the dinghy**

- B - Distance from top of transom to top of brace
- C - Distance between the two braces
- D - Distance from tube to outer brace

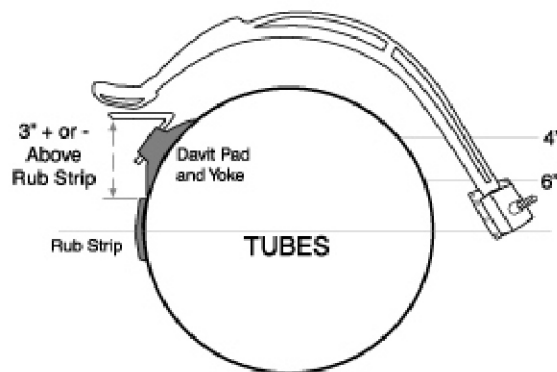
**Please take pictures of the Transom so we can see what it looks like: email to [sales@weaverindustries.com](mailto:sales@weaverindustries.com)**

**Arc #1**



For 15"-17" Tubes with transom 0-4" down from top of tubes.

**Arc #2**



For 17" - 18" tubes with transom 4-6" down: for larger tubes and deeper transoms



**Weaver**  
Marine Products

Weaver Industries, Inc.

6570 W Boekel Rd · Rathdrum, ID 83858

(800) 367-4062 · (208) 687-3982 · Fax (208) 687-0782

[www.weaverindustries.com](http://www.weaverindustries.com)

Name: \_\_\_\_\_

Address: \_\_\_\_\_

City: \_\_\_\_\_ ST: \_\_\_\_\_ Zip: \_\_\_\_\_

Phone Day: \_\_\_\_\_ Eve: \_\_\_\_\_

Dealer: \_\_\_\_\_

P.O.# \_\_\_\_\_

Weaver industries, is not responsible for any damage occurred from the dinghy and the motor being too heavy for the swim platform. We strongly recommend that you get the maximum weight of the swim platform load confirmed by the Manufacture or Dealer of your yacht.