

# Anchor Swivels

Wichard anchor swivels are designed to simplify mooring operations, especially when hoisting the anchor. Their unique design ensures that the anchor automatically aligns itself correctly in the bow roller, even if it comes up in the wrong orientation.

## Benefits

- Comprehensive range - for anchor chains from 6 to 14 mm (1/4" - 9/16")
- Compatible with most anchors on the market
- Quality stainless steel construction for strength and corrosion resistance
- Unique design
- Material: 316L stainless steel

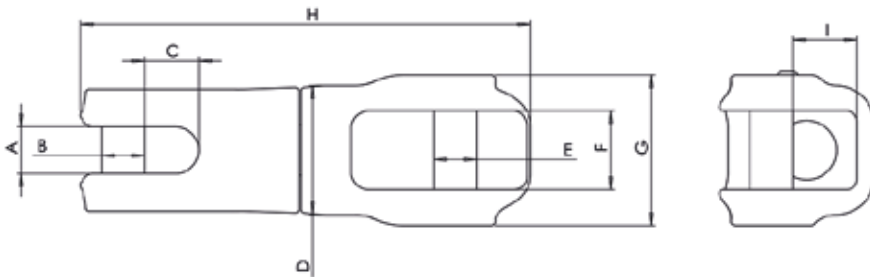
## Applications

- Safer and easier anchoring
- Secure connection between anchor and chain
- Suitable on sailing boats (multihulls, monohulls) and power boats.



Part #	Ø Chain inch	A inch	B inch	C inch	D inch	E inch	F inch	G inch	H inch	W.L lbs	B.L lbs	Weight lbs
<b>ANCHOR SWIVELS</b>												
<b>2975w</b>	1/4", 5/16"	23/64"	5/16"	19/32"	1 7/64"	23/64"	5/8"	1 3/8"	4"	1100	3000	0.400
<b>2976w</b>	3/8", 1/2"	33/64"	25/64"	19/32"	1 27/64"	15/32"	55/64"	1 21/32"	5"	2050	5000	0.690
<b>2977w</b>	1/2", 9/16"	43/64"	5/8"	15/16"	2 3/64"	5/8"	1 3/16"	2 23/64"	6 13/16"	3500	9500	2.465

Part #	Ø Chain mm	A mm	B mm	C mm	D mm	E mm	F mm	G mm	H mm	W.L Kg	B.L Kg	Weight Kg
<b>ANCHOR SWIVELS</b>												
<b>2975w</b>	6 & 8	9	8	15	28	9	16	35	100	1100	3000	0.400
<b>2976w</b>	10 & 12	13	10	15	36	12	22	42	125	2050	5000	0.690
<b>2977w</b>	12 & 14	17	16	24	52	16	30	60	173	3500	9500	2.465



Anchor swivel video