

DYNAMIC TRIM CONTROL SYSTEM

FOR INTEGRATION

SERIES S

INSTALLATION GUIDE

ZIPWAKE

CHOOSE COMFORT. ENJOY PERFORMANCE.

TOOLS

Drill bits
 Ø 3 mm (1/8")
 Ø 3.5 mm (9/64")
 Ø 4 mm (5/32")
 Ø 5 mm (13/64")



Hole saw
 Ø 19 mm (3/4")



Screw bits
 T20
 T25
 T30



Power drill



Sealant



Flat screwdriver



Bits screwdriver



Wrench

13 mm (33/64")
 27 mm (1 1/16")



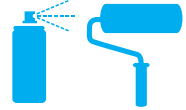
Utility knife



Hacksaw

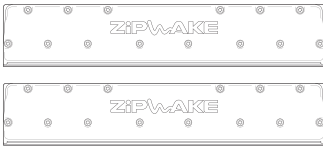


Antifouling



KIT BOX CONTENTS

INTERCEPTOR



2 x Interceptors
 with Cable 3 m & Cable Cover

DISTRIBUTION UNIT



1 x Distribution Unit
 with Power Cable 4 m

INTEGRATOR MODULE



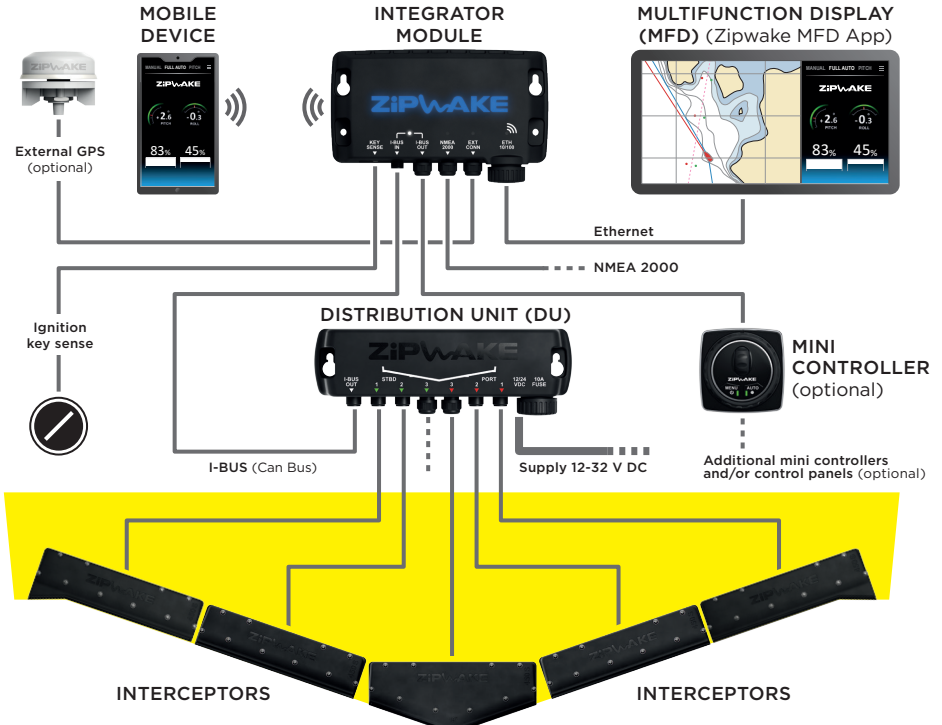
1 x Integrator Module

- + Operator's Manual
- + Warranty Card
- + Installation Guide
- + Drill Templates
- + Mounting Screws
- + Operator's Quick Guide
- + Startup Checklist



1 x Standard Cable 7 m

SYSTEM OVERVIEW

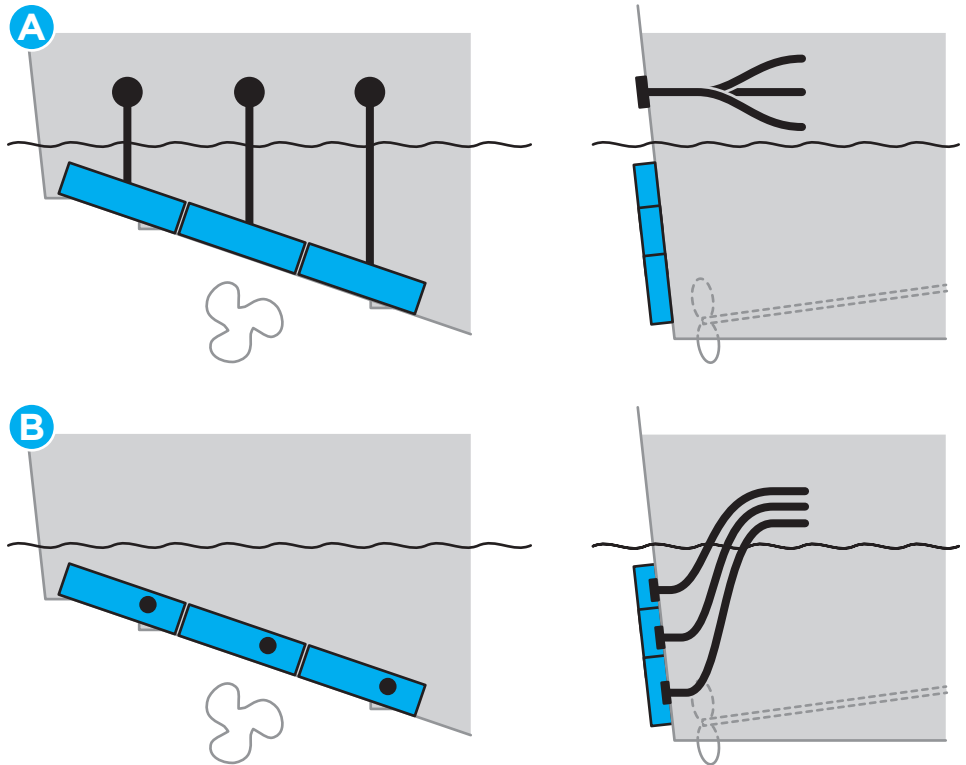


INTERCEPTOR

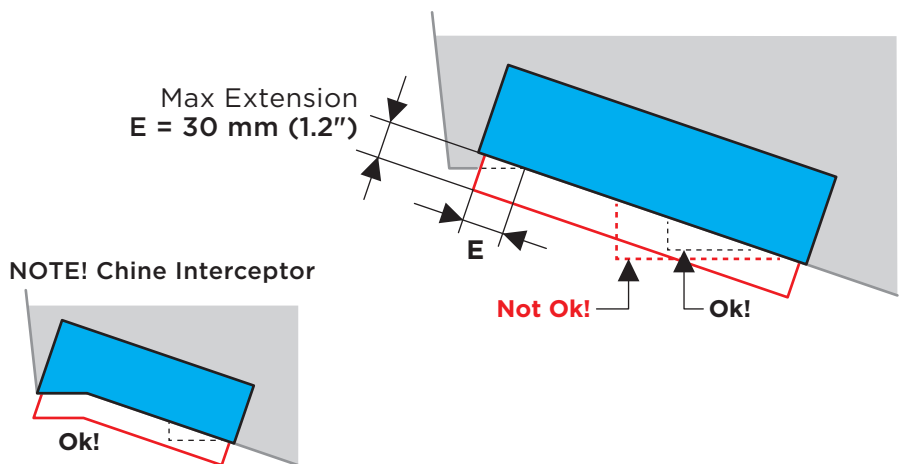
1 MOUNTING OPTIONS

THRU-HULL CABLE FITTINGS

Depending on preference, the Interceptors can be mounted with thru-hull cable fittings above the waterline (A) or below, concealed behind the Interceptors (B).



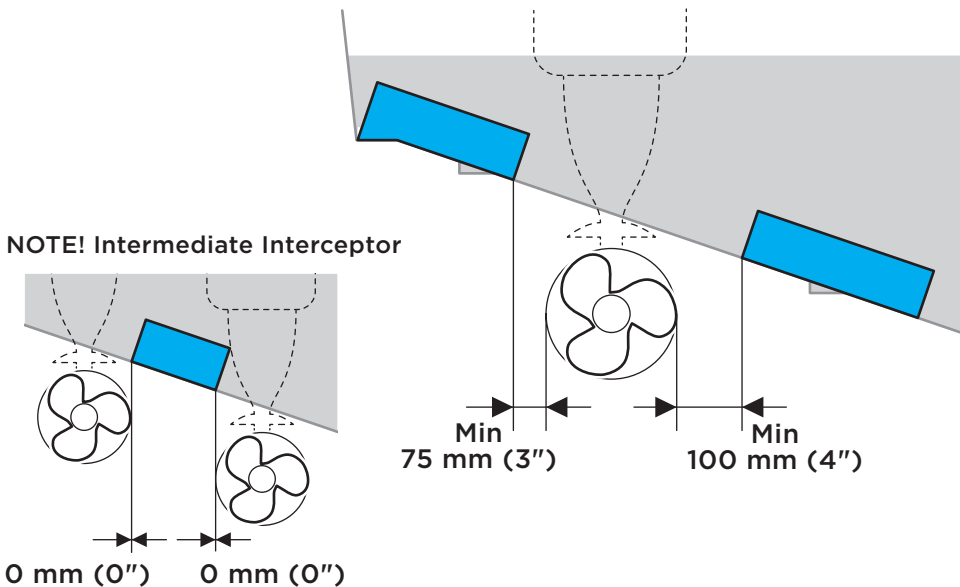
ALLOWED SPRAY RAIL OVERLAP



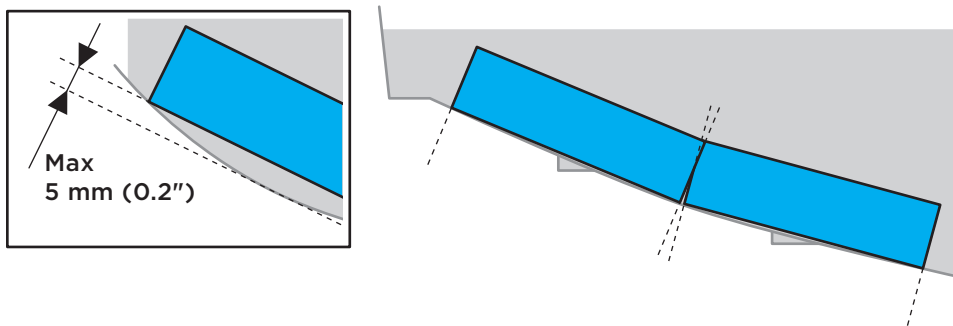
INTERCEPTOR

PROPELLER CLEARANCE

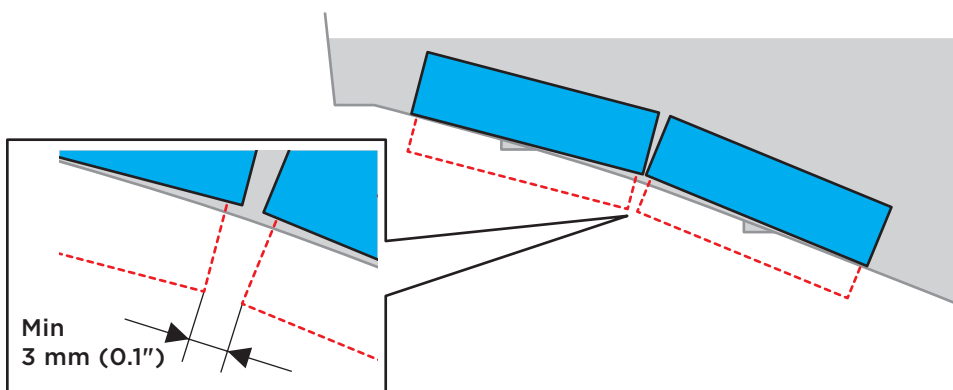
If the boat has an outboard engine or sterndrive, the Interceptors must be mounted with clearance to the propeller(s).



CONVEX BOTTOM CURVATURE



CONCAVE BOTTOM CURVATURE

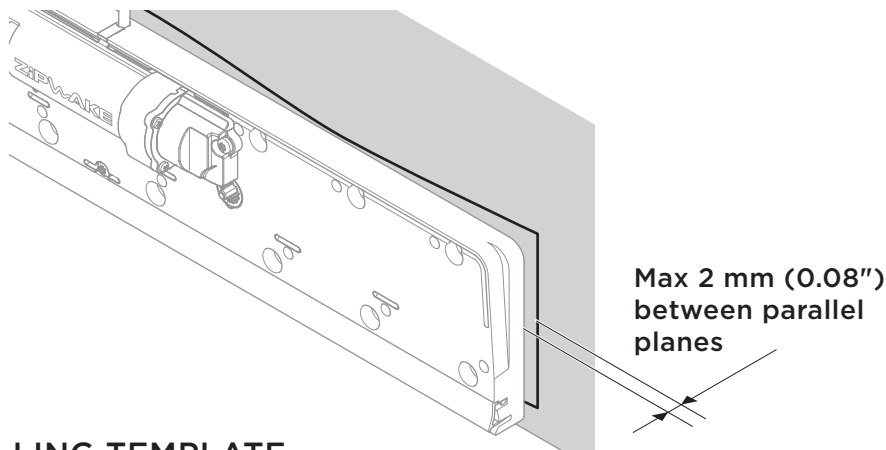


INTERCEPTOR

2 PREPARE THE TRANSOM

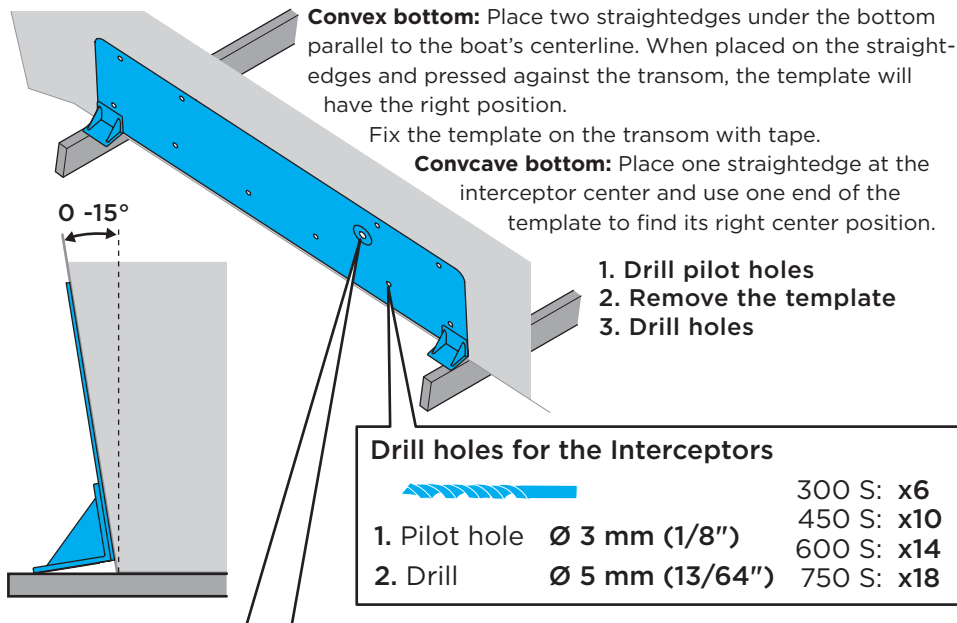
ENSURE A FLAT SURFACE FOR EACH INTERCEPTOR

The transom must be relatively flat where the Interceptors are mounted to ensure that they work properly.



DRILLING TEMPLATE

Start mounting the Interceptors as far outward as possible, although well inside the transom. Continue inwards when installing multiple Interceptors.



Only if a concealed thru-hull fitting will be used

Option 1:

1. Pilot hole Ø 3 mm (1/8")
2. Hole saw Ø 19 mm (3/4")

Option 2 (M18 x 2.5):

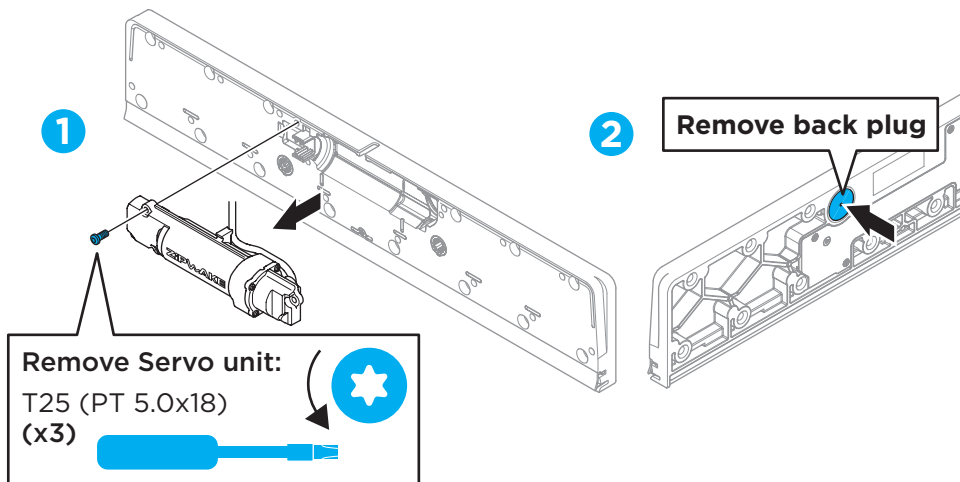
1. Pilot hole Ø 3 mm (1/8")
2. Hole saw Ø 16 mm (5/8")
3. Tap M18 x 2.5



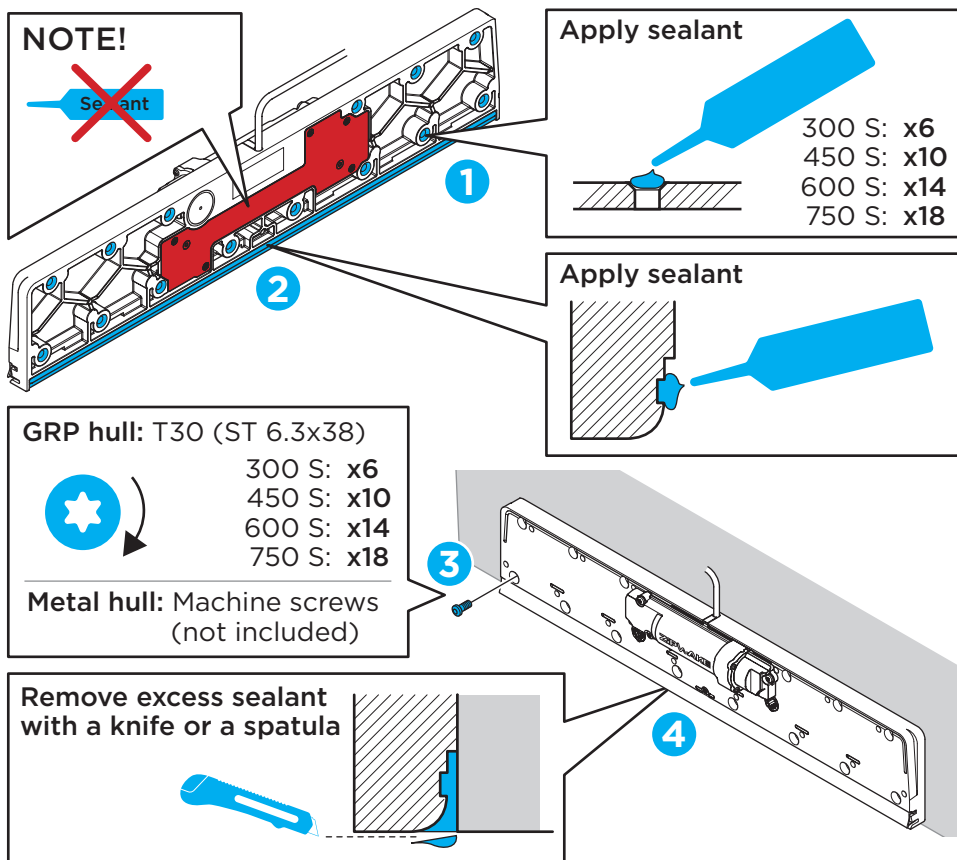
INTERCEPTOR

3 INSTALL THE BACK PLATES

A. FOR THRU-HULL FITTINGS ABOVE THE WATERLINE GO STRAIGHT TO STEP B.



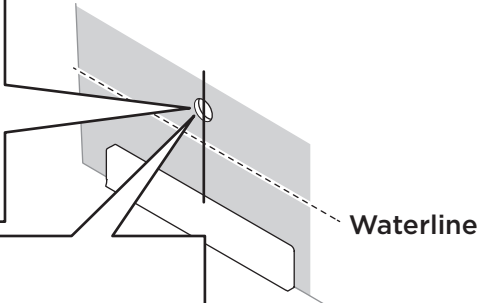
B. MOUNT THE BACK PLATE



INTERCEPTOR

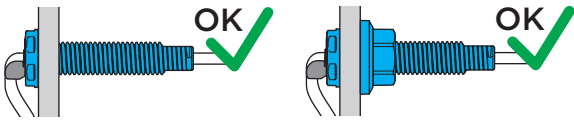
4A INSTALL THRU-HULL FITTINGS ABOVE THE WATERLINE

1 Drill hole for thru-hull fitting
Align the hole with the Interceptor cable

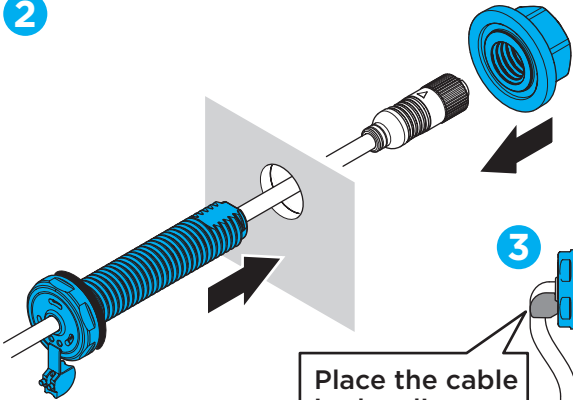



1. Pilot hole \varnothing 3 mm (1/8")
2. Hole saw \varnothing 19 mm (3/4")

Option:
1. Pilot hole \varnothing 3 mm (1/8")
2. Hole saw \varnothing 16 mm (5/8")
3. Tap M18 x 2.5

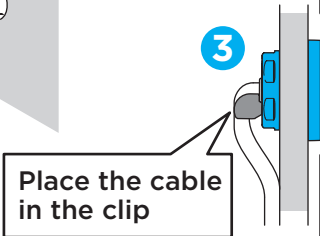


2




Tighten: 
27 mm (1 1/16") wrench
10 Nm (7.4 lb-ft)

3



Place the cable in the clip

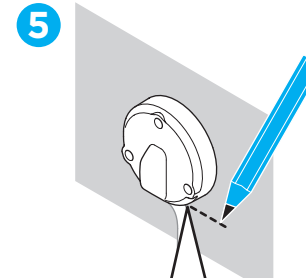
Hold: 
13 mm (33/64") wrench

4



Place the cover on the thru-hull fitting

5



Mark the lower edge of the thru-hull cover

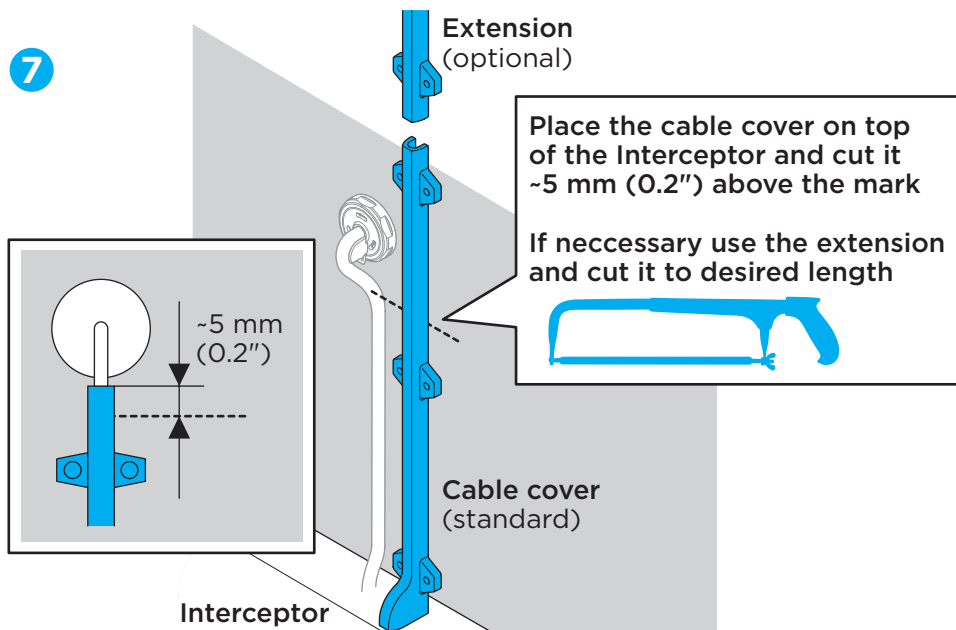
6



Remove the thru-hull cover

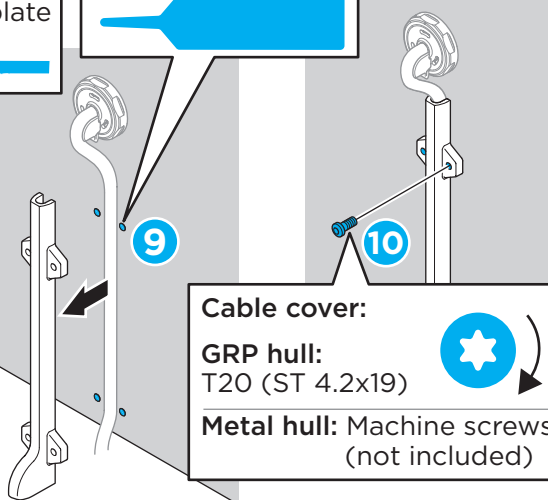
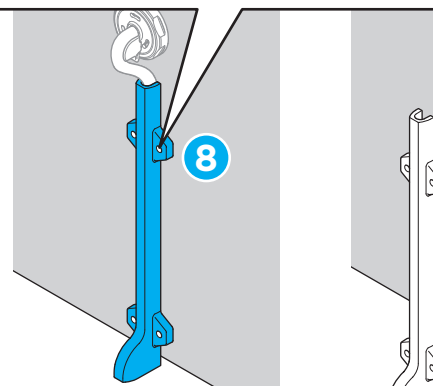
INTERCEPTOR

7



Drill holes for the cable cover
Use the cover as a drill template
Ø 3.5 mm (9/64")

Apply sealant



Cable cover:

GRP hull:
T20 (ST 4.2x19)

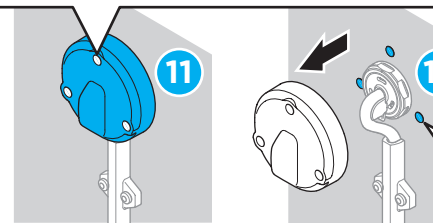
Metal hull: Machine screws
(not included)

Drill holes (x3) for the cover
Use the cover as a drill template
Ø 5 mm (13/64")

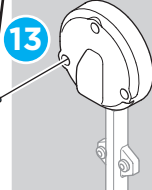
Thru-hull cover:

GRP hull:
T30 (ST 6.3x38) (x3)

Metal hull: Machine screws
(not included)



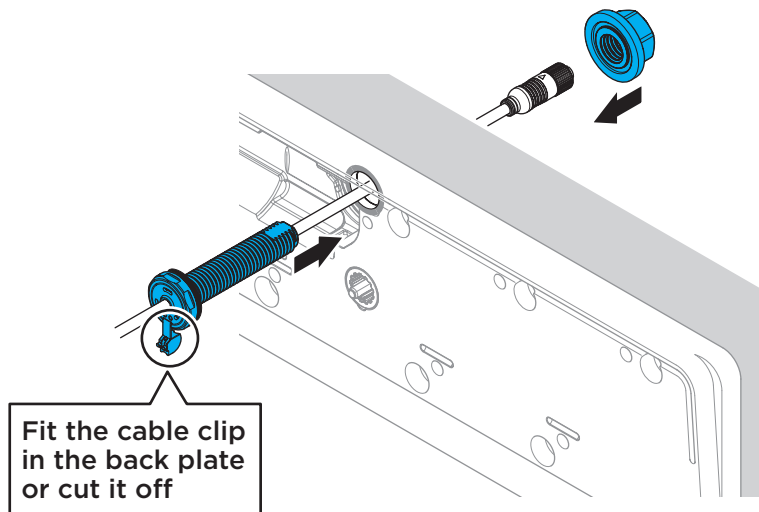
Apply sealant (x3)



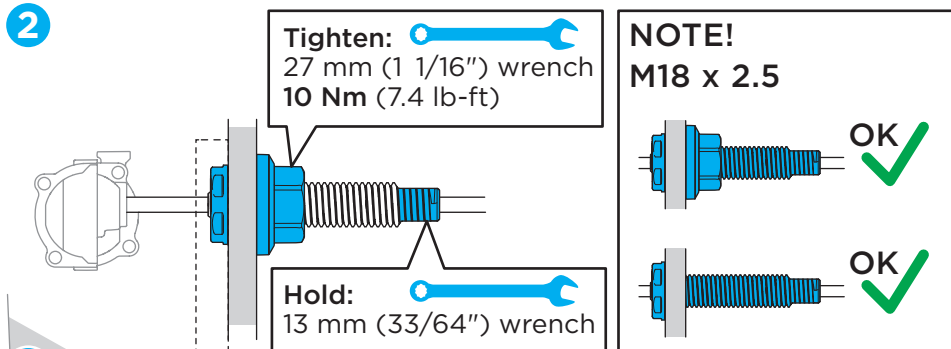
INTERCEPTOR

4B INSTALL CONCEALED THRU-HULL FITTINGS UNDER THE WATERLINE

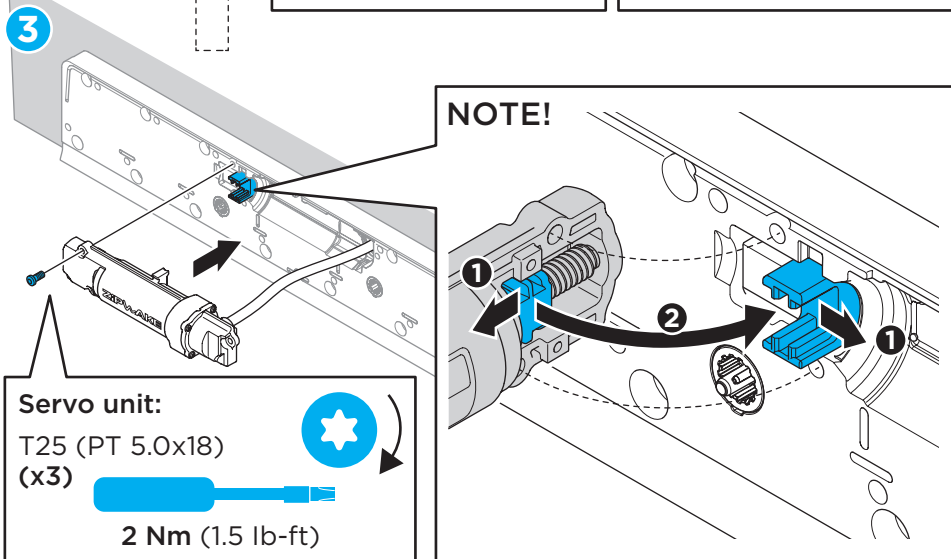
1



2

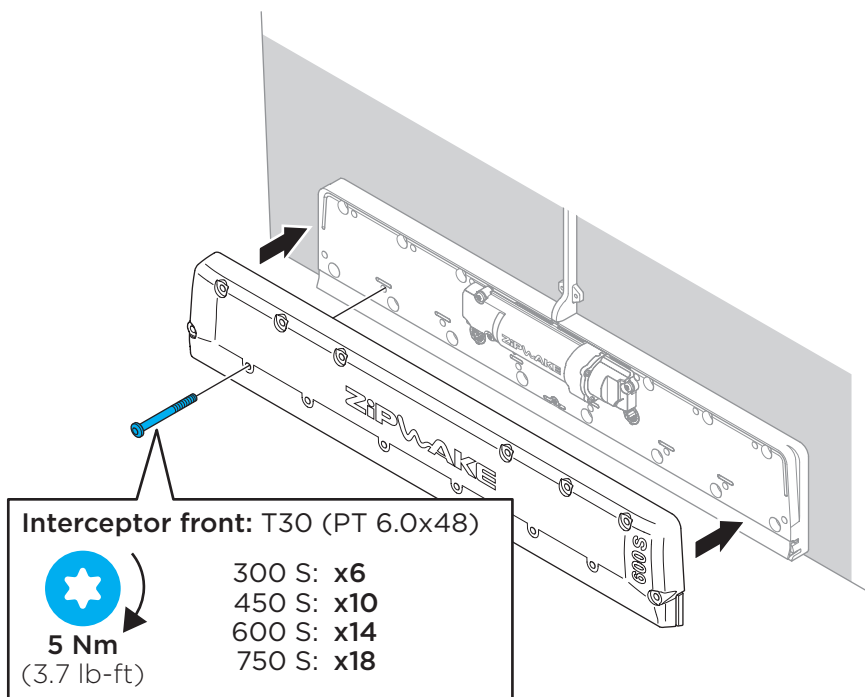


3

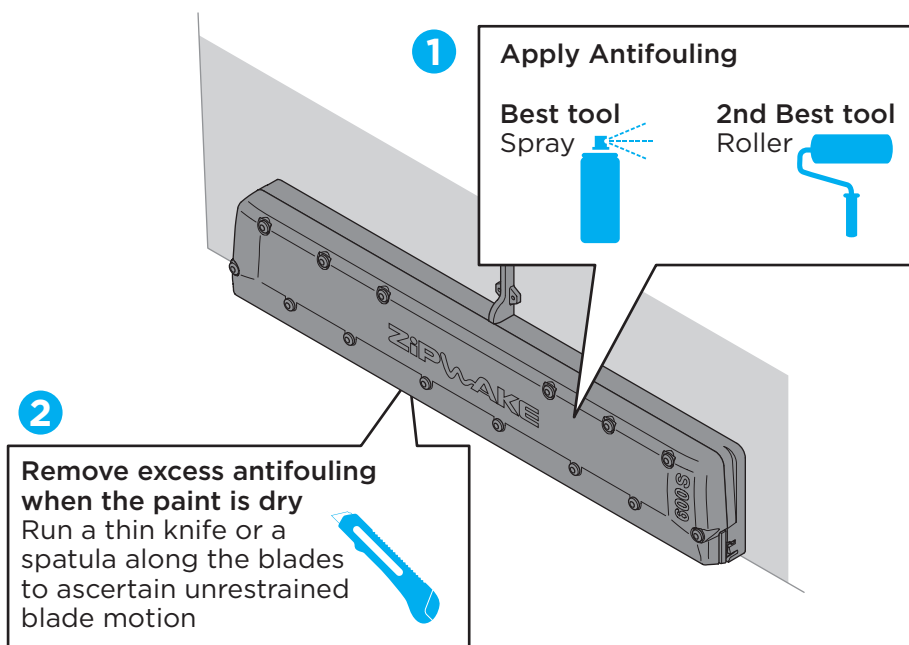


INTERCEPTOR

5 INSTALL THE INTERCEPTOR FRONTS



6 PAINT THE INTERCEPTORS WITH ANTIFOULING



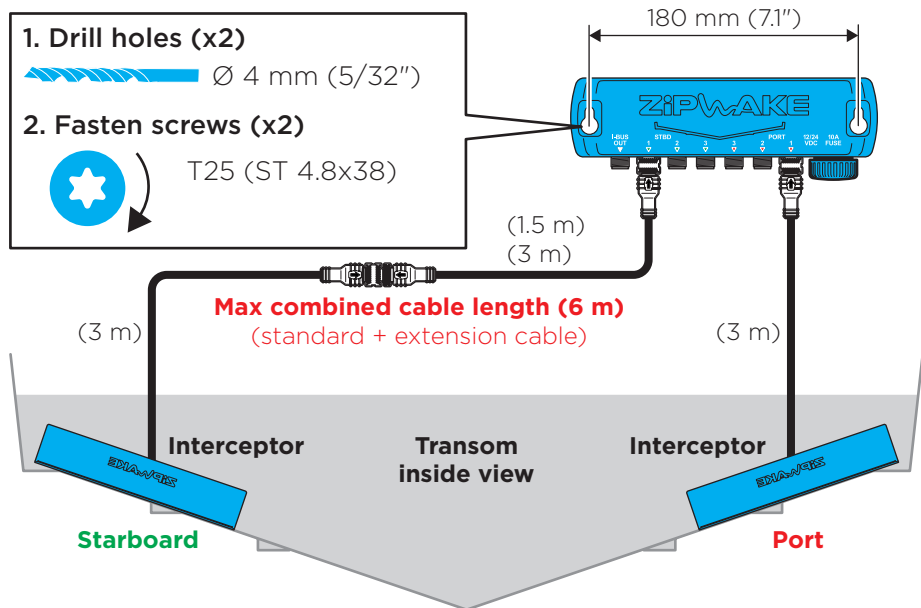
DISTRIBUTION UNIT

1 MOUNT THE DISTRIBUTION UNIT

Mount the distribution unit inboard where it is easy to connect it to both interceptors and power supply (battery) e.g. the engineroom or other suitable compartment.

NOTE!

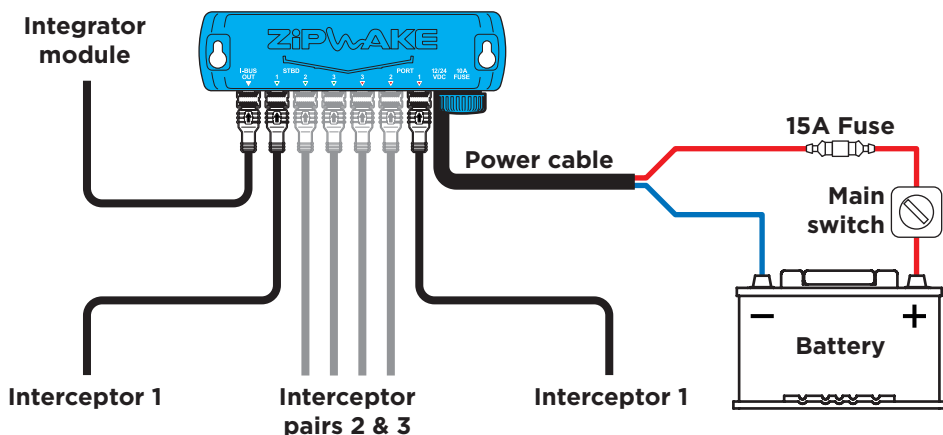
The maximum cable length (including extra cable) from an interceptor to the distribution unit is 6 m (20 ft).



2 CONNECT THE DISTRIBUTION UNIT

NOTE!

Detailed wiring diagram is available at the end of this folder.



NOTE! The system allows an unpaired Interceptor mounted on the center of the transom. A centerline mounted Interceptor should always be connected to port side 3 to work properly.



INTEGRATOR MODULE —

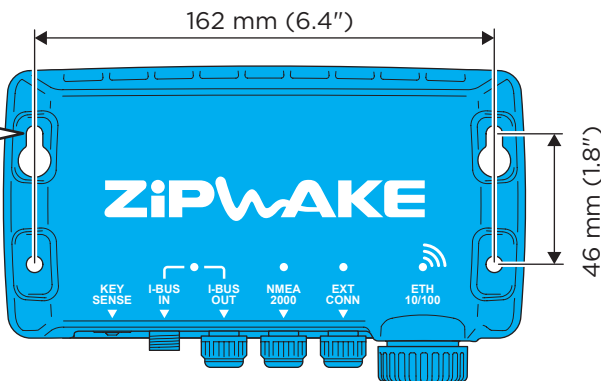
1 MOUNT THE INTEGRATOR MODULE

Mount the integrator module on a rigid surface where it is easy to connect it to the distribution unit and other equipment e.g. under the dash or another suitable compartment. If the system will be used with mobile devices, mount the integrator module for maximum signal strength.

NOTE!

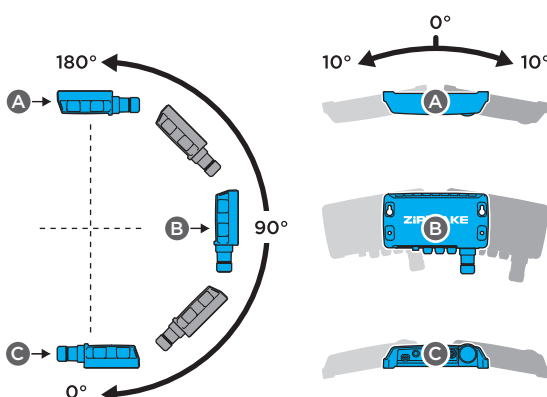
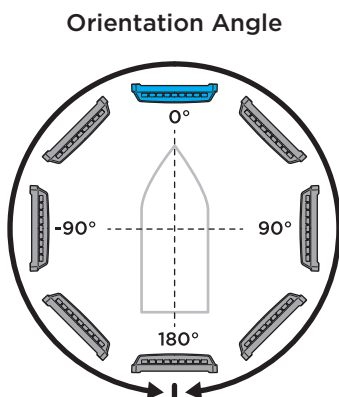
0.5 m (1.6 ft) safe distance to magnetic compass.

1. Drill holes (x4)
Ø 4 mm (5/32")

2. Fasten screws (x4)
T25 (ST 4.8x38)




MOUNTING RESTRICTIONS

Mount the integrator module within the angles shown below.



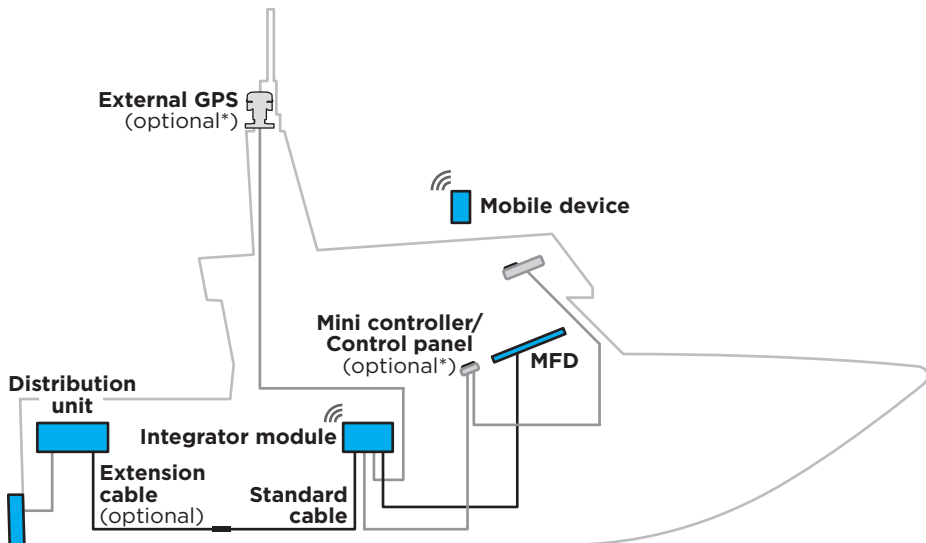
NOTE!

Make sure the integrator module orientation angle (mounting angle relative the boat's forward direction) is set as accurately as possible during initial start-up.

INTEGRATOR MODULE —

2 CONNECT THE INTEGRATOR MODULE

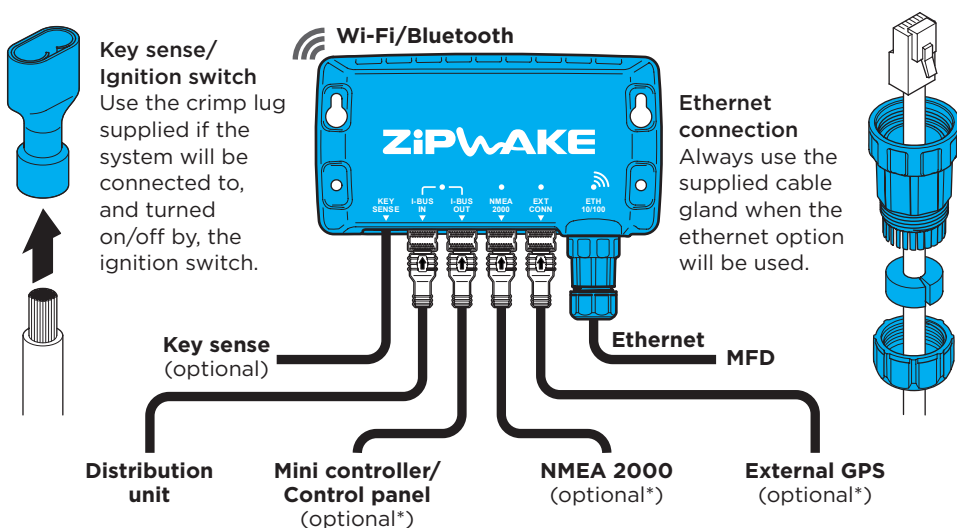
Route the cables between the integrator module, the distribution unit and optional multifunction display (MFD) and/or other equipment. Use optional extension cables if necessary.



With the integrator module connected, the system can be controlled from one or several devices e.g. an MFD, a mobile device, a Zipwake mini controller or a Zipwake control panel.

NOTE!

Detailed wiring diagram is available at the end of this folder.



* **IMPORTANT** The integrator module requires at least one external GPS signal via NMEA 2000, a Zipwake external GPS or a Zipwake control panel.

INTEGRATOR MODULE

3 INITIAL START

Refer to the Operator's Manual for detailed information about setting up and operating the system.

SETTING UP THE SYSTEM

MULTIFUNCTION DISPLAY (MFD)

The Zipwake application automatically appears on a connected (compatible) MFD. Refer to the MFD manufacturer or manual for detailed information on compatible models and how to launch integration applications such as the Zipwake Integrator Module interface on your MFD model. At first start-up, follow the steps on the MFD to complete system installation.

MOBILE DEVICE

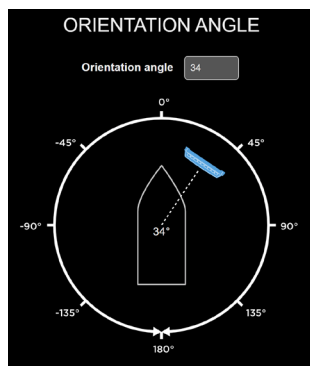
Scan the QR-code on the integrator module label **1** to connect to the Wi-Fi network (also available from the System Information page when the Zipwake application is installed). Scan the QR-code from integrator module label **2** to launch the Zipwake application (APP) and add it to the device start screen for future use.



NOTE!

Make sure the integrator module orientation angle (mounting angle relative the boat's forward direction) is set as accurately as possible within $\pm 5^\circ$.

If the orientation angle is difficult to measure or estimate, use a compass or a mobile device compass application to determine the angle.

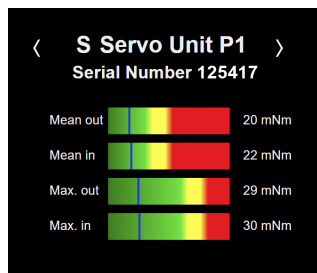


INTERCEPTOR CHECK

Carry out an Interceptor Check to verify function immediately after installation and before launching the boat. Repeat this before every launch.

All readings must be green!

Corrective actions are always necessary when excessive torque levels are observed. Verify the flatness of the transom, excess use of sealant behind the interceptor and/or excess antifouling between the blades and adjust if needed.

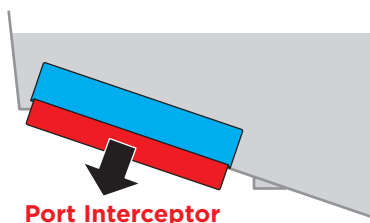


VERIFY FUNCTION ON SHORE

1. Turn the Roll wheel clockwise
2. Port side Interceptor(s) should move out
3. Repeat counter-clockwise for starboard

IMPORTANT

Always use the controls to move the Interceptor blades. Never try to force the Interceptor blades by hand.

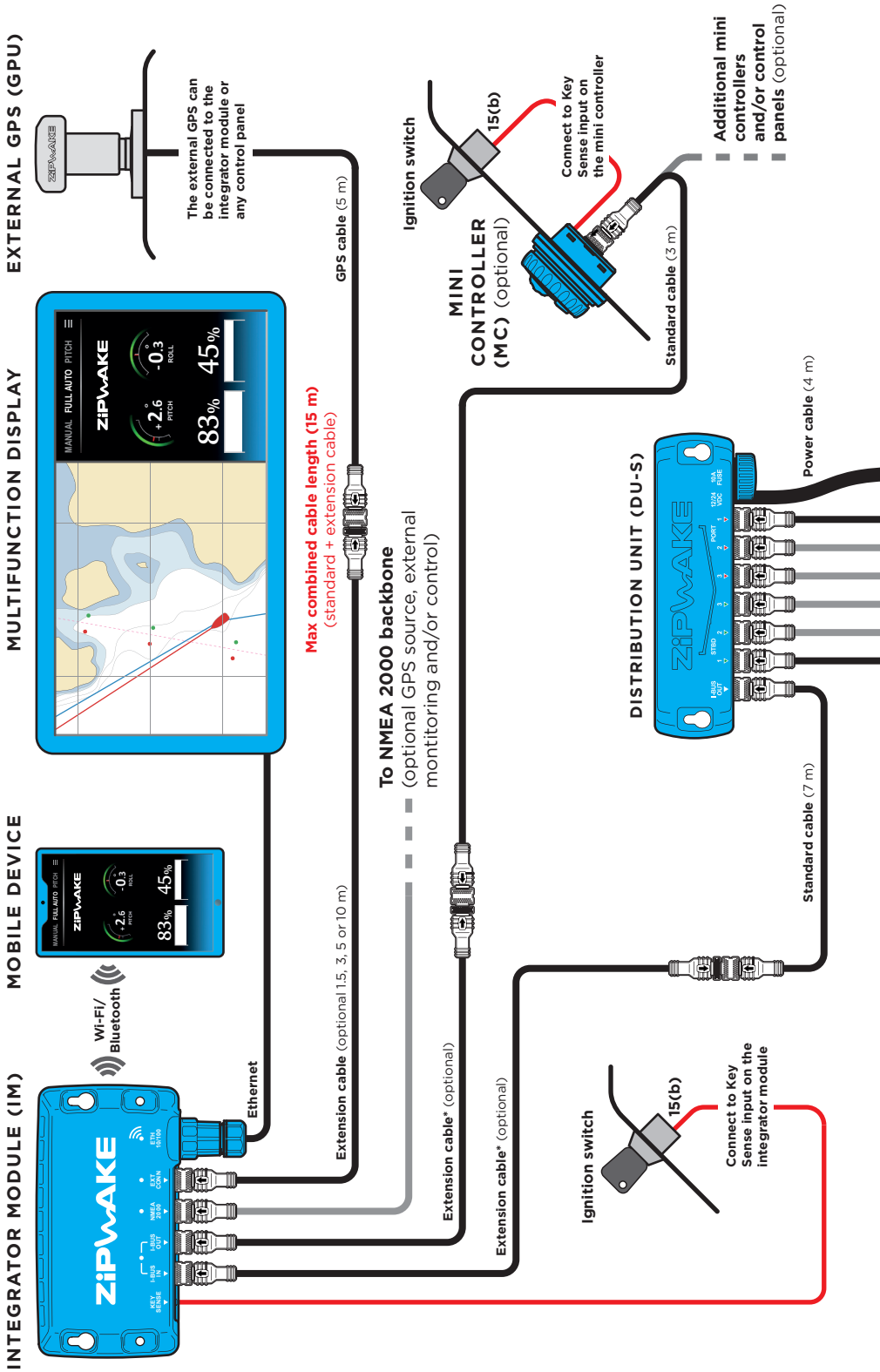


WIRING DIAGRAM

ACCESSORIES

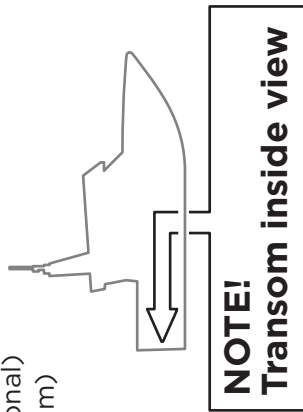
Model	Part No.	Description
MC	2012401	MINI CONTROLLER WITH STANDARD CABLE 3 M
CP-S	2011238	CONTROL PANEL S WITH STANDARD CABLE 7 M
DU-S	2011239	DISTRIBUTION UNIT S WITH POWER CABLE 4 M
IT300-S	2011232	INTERCEPTOR 300 S WITH CABLE 3 M & CABLE COVERS
IT450-S	2011233	INTERCEPTOR 450 S WITH CABLE 3 M & CABLE COVERS
IT600-S	2011234	INTERCEPTOR 600 S WITH CABLE 3 M & CABLE COVERS
IT750-S	2011235	INTERCEPTOR 750 S WITH CABLE 3 M & CABLE COVERS
IT450-S V13	2011482	INTERCEPTOR 450 S V13 WITH CABLE 3 M & CABLE COVERS
IT450-S V16	2011483	INTERCEPTOR 450 S V16 WITH CABLE 3 M & CABLE COVERS
IT450-S V19	2011484	INTERCEPTOR 450 S V19 WITH CABLE 3 M & CABLE COVERS
IT450-S V22	2011485	INTERCEPTOR 450 S V22 WITH CABLE 3 M & CABLE COVERS
IT300-S CHINE PORT	2011702	INTERCEPTOR 300 S CHINE PORT SIDE WITH CABLE 3 M & CABLE COVERS
IT300-S CHINE STBD	2011703	INTERCEPTOR 300 S CHINE STARBOARD SIDE WITH CABLE 3 M & CABLE COVERS
IT450-S CHINE PORT	2011704	INTERCEPTOR 450 S CHINE PORT SIDE WITH CABLE 3 M & CABLE COVERS
IT450-S CHINE STBD	2011705	INTERCEPTOR 450 S CHINE STARBOARD SIDE WITH CABLE 3 M & CABLE COVERS
IT300-S INTER	2011701	INTERCEPTOR 300 S INTERMEDIATE WITH CABLE 3 M & CABLE COVERS
CP ALU FRAME	2011281	CONTROL PANEL ALU FRAME
CP COVER	2011381- 2011385	CONTROL PANEL COVER WHITE, LIGHT GRAY, MID GRAY, DARK GRAY, BLACK
GPU	2011240	GLOBAL POSITIONING UNIT WITH CABLE 5 M & MOUNT KIT
GB	2011622	GIMBAL BRACKET FOR CONTROL PANEL
CC-S	2011071	CABLE COVER S KIT
EC1.5-M12	2011258	M12 EXTENSION CABLE 1.5 M
EC3-M12	2011259	M12 EXTENSION CABLE 3 M
EC5-M12	2011260	M12 EXTENSION CABLE 5 M
EC10-M12	2011261	M12 EXTENSION CABLE 10 M
EC15-M12	2011260	M12 EXTENSION CABLE 15 M
EC20-M12	2011261	M12 EXTENSION CABLE 20 M

WIRING DIAGRAM



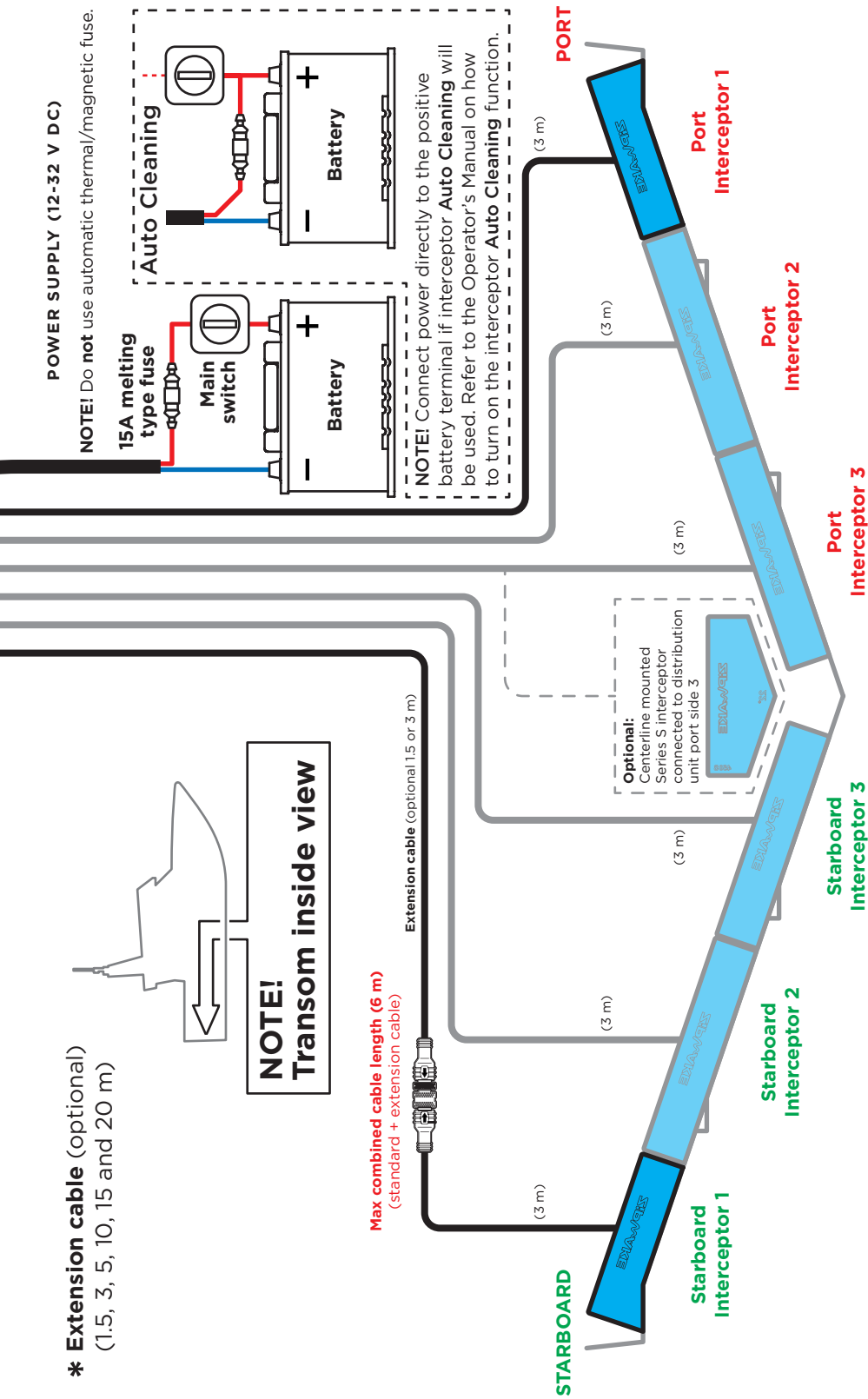
WIRING DIAGRAM

* **Extension cable** (optional)
(1.5, 3, 5, 10, 15 and 20 m)



Max combined cable length (6 m)
(standard + extension cable)

Extension cable (optional 1.5 or 3 m)



Visit zipwake.com for additional information such as:

- Operator's Manuals and Installation Guides in different languages
- Product specifications, including a list of accessories and spare parts
- Application examples and Interceptor mounting options
- Drawings and 3D models of system components
- Software upgrades for your Dynamic Trim Control System
- NMEA 2000 documentation

ZIPWAKE

CHOOSE COMFORT. ENJOY PERFORMANCE.